

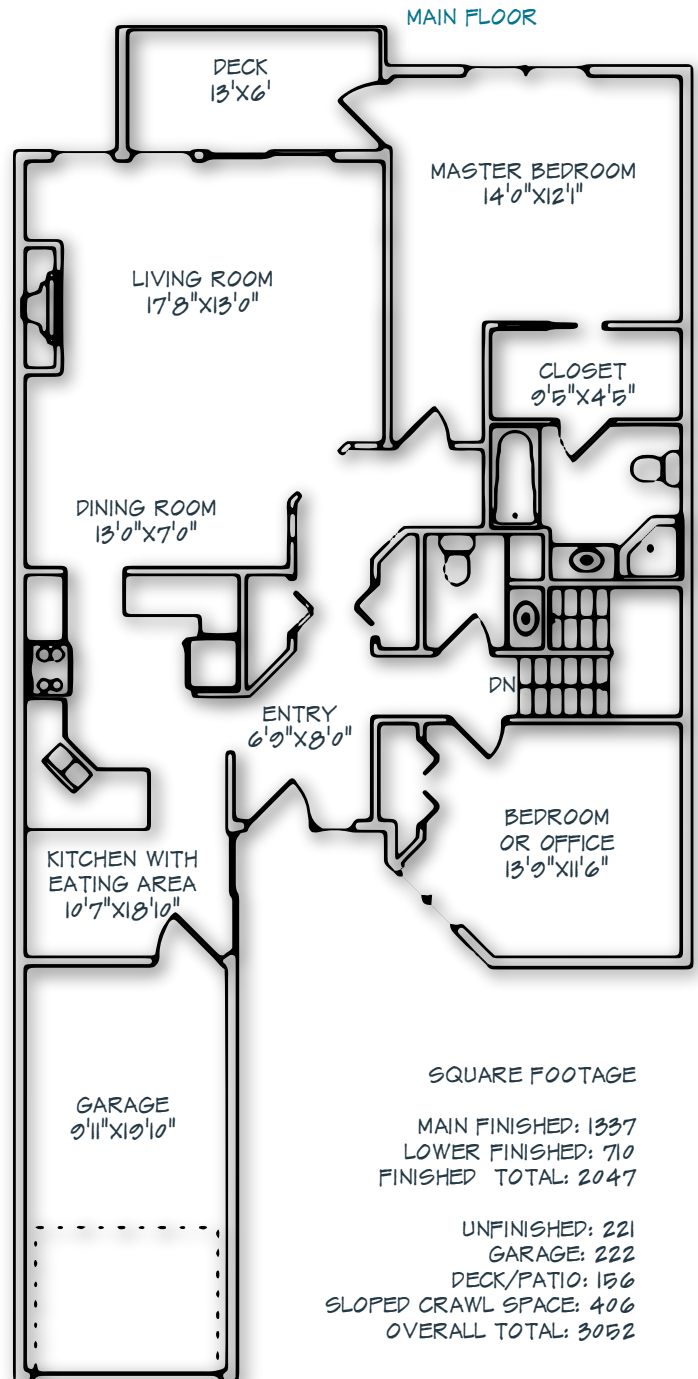
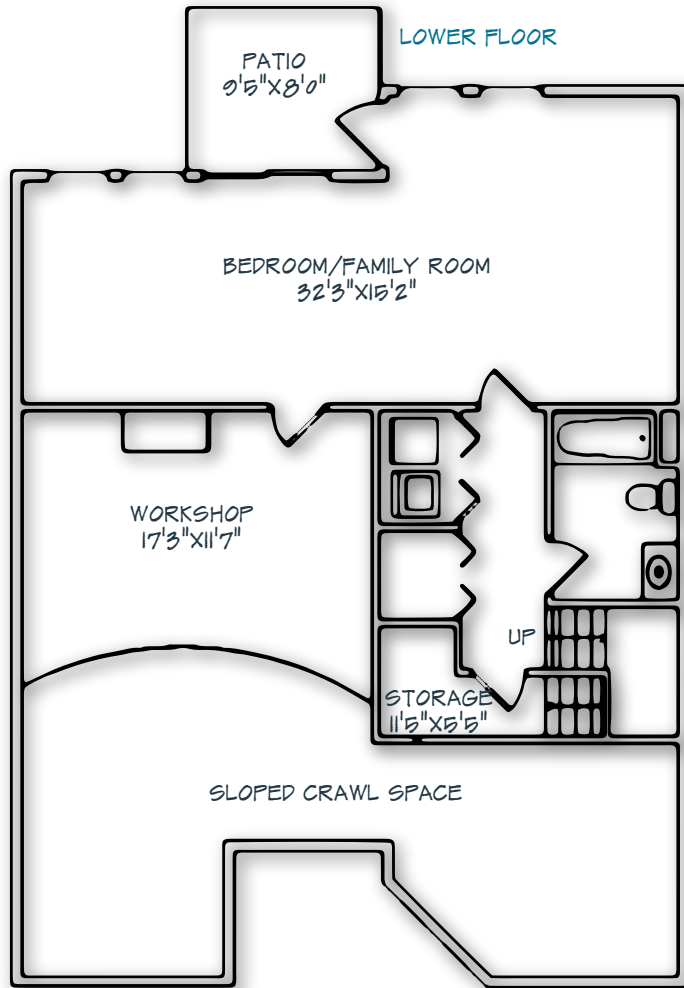
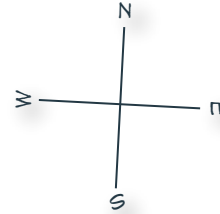
Measurements and Square Footage are approximate. Buyer to verify on-site

Prepared for the exclusive use of
 Paul Holland - Realtor

30-850 PARKLANDS DRIVE

Victoria, BC

July 24, 2013



SQUARE FOOTAGE

MAIN FINISHED: 1337
 LOWER FINISHED: 710
 FINISHED TOTAL: 2047

UNFINISHED: 221
 GARAGE: 222
 DECK/PATIO: 156
 SLOPED CRAWL SPACE: 406
 OVERALL TOTAL: 3052