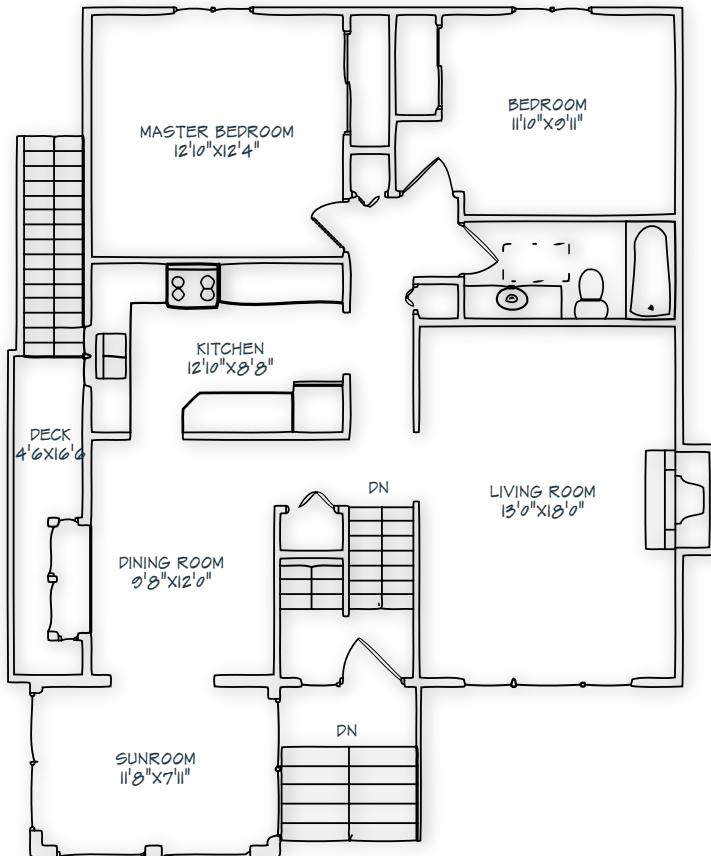
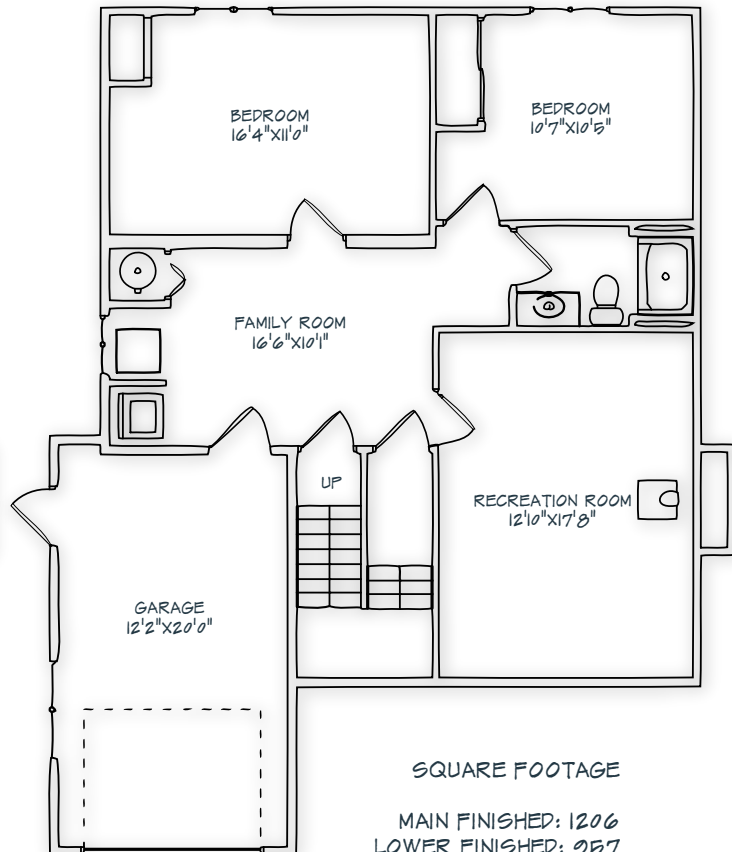


LOWER FLOOR



MAIN FLOOR



SQUARE FOOTAGE

MAIN FINISHED: 1206
LOWER FINISHED: 957
FINISHED TOTAL: 2163
SHED/PLAYHOUSE: 324
GARAGE: 253
DECK/PATIO: 44
OVERALL TOTAL: 2784