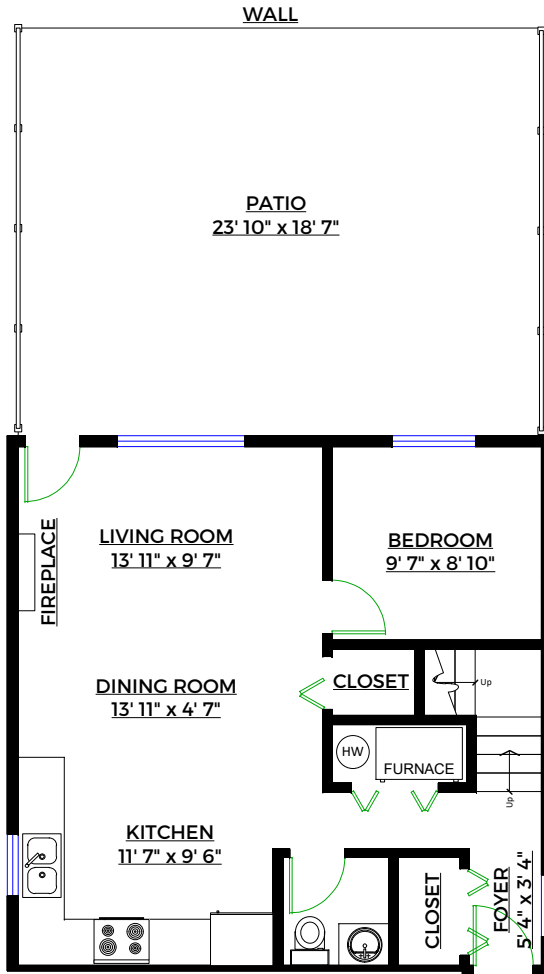
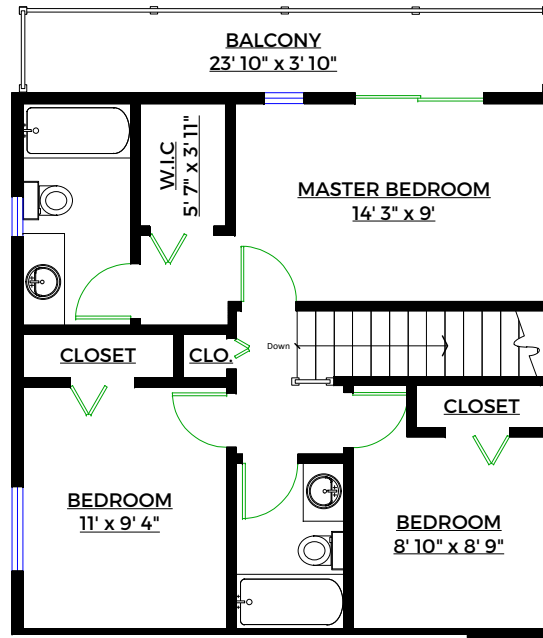




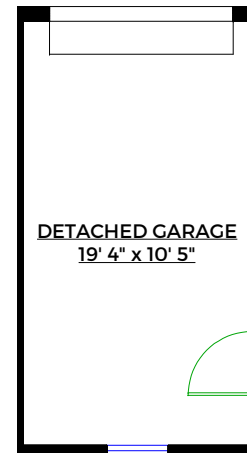
William Nip
604.767.7809



MAIN LEVEL
Floor Area: 607 Sq. Ft.



UPPER LEVEL
Floor Area: 615 Sq. Ft.



**5698 Hardwick Street,
Burnaby, B.C.**

Totals**

Main Level: 607 sq. ft.
Upper Level: 615 sq. ft.
Total: 1,222 sq. ft.

Patio: 443 sq. ft.
Balcony: 91 sq. ft.
Garage: 229 sq. ft.
Total: 763 sq. ft.

** Approx. based on interior measurements to exterior walls
** Total square footage not taken from original blueprints

