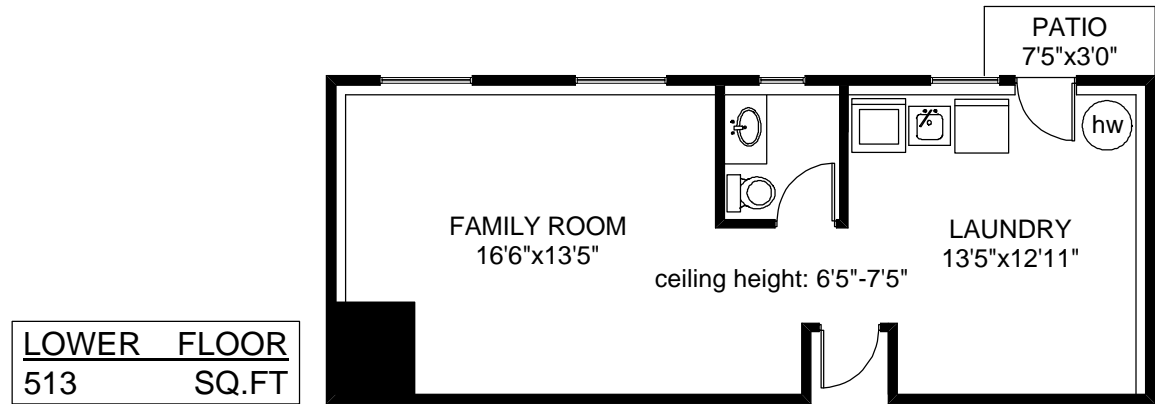
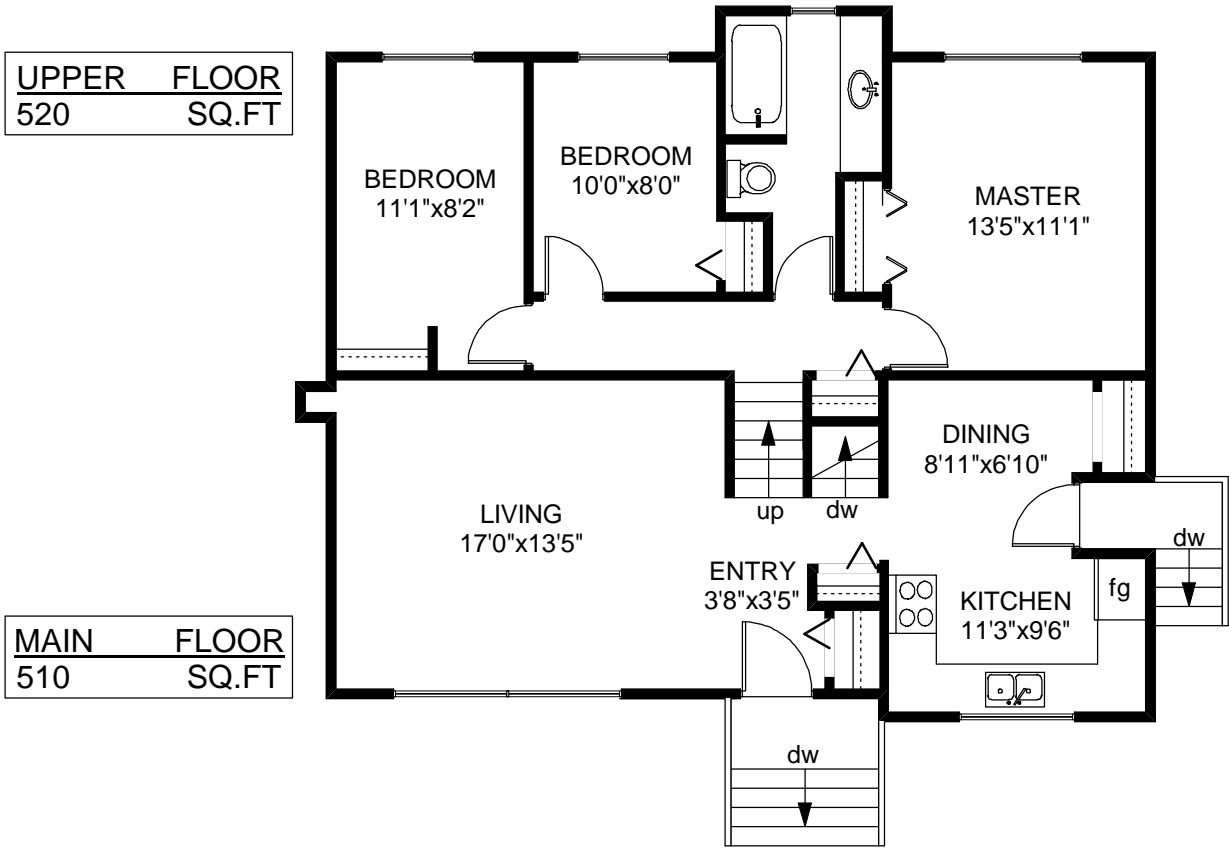


# 967 WILMER ROAD

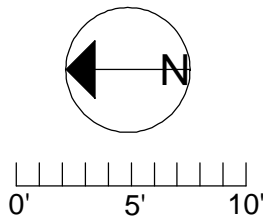


UPPER FLOOR  
520 SQ.FT

MAIN FLOOR  
510 SQ.FT

LOWER FLOOR  
513 SQ.FT

|       | FINISHED<br>SQ. FT. | UNFINISHED<br>SQ. FT. | TOTAL<br>SQ. FT. |
|-------|---------------------|-----------------------|------------------|
| MAIN  | 510                 | 0                     | 510              |
| UPPER | 520                 | 0                     | 520              |
| LOWER | 513                 | 0                     | 513              |
| TOTAL | 1543                | 0                     | 1543             |
| PATIO | 0                   | 22                    | 22               |



PREPARED FOR THE EXCLUSIVE USE OF  
BRENDA RUSSELL OF  
ROYAL LEPAGE COAST CAPITAL REALTY

MEASURED ON: 05/30/07  
DRAWING FILE: 04593

Tafe Measure VICTORIA, B.C.  
Ph. 883.8894  
www.tafemeasure.com