

#1404 650 16th Street,
West Vancouver, BC

DON EILERS



RE/MAX Masters Realty

Cell: 604-889-9449

don@doneilers.com

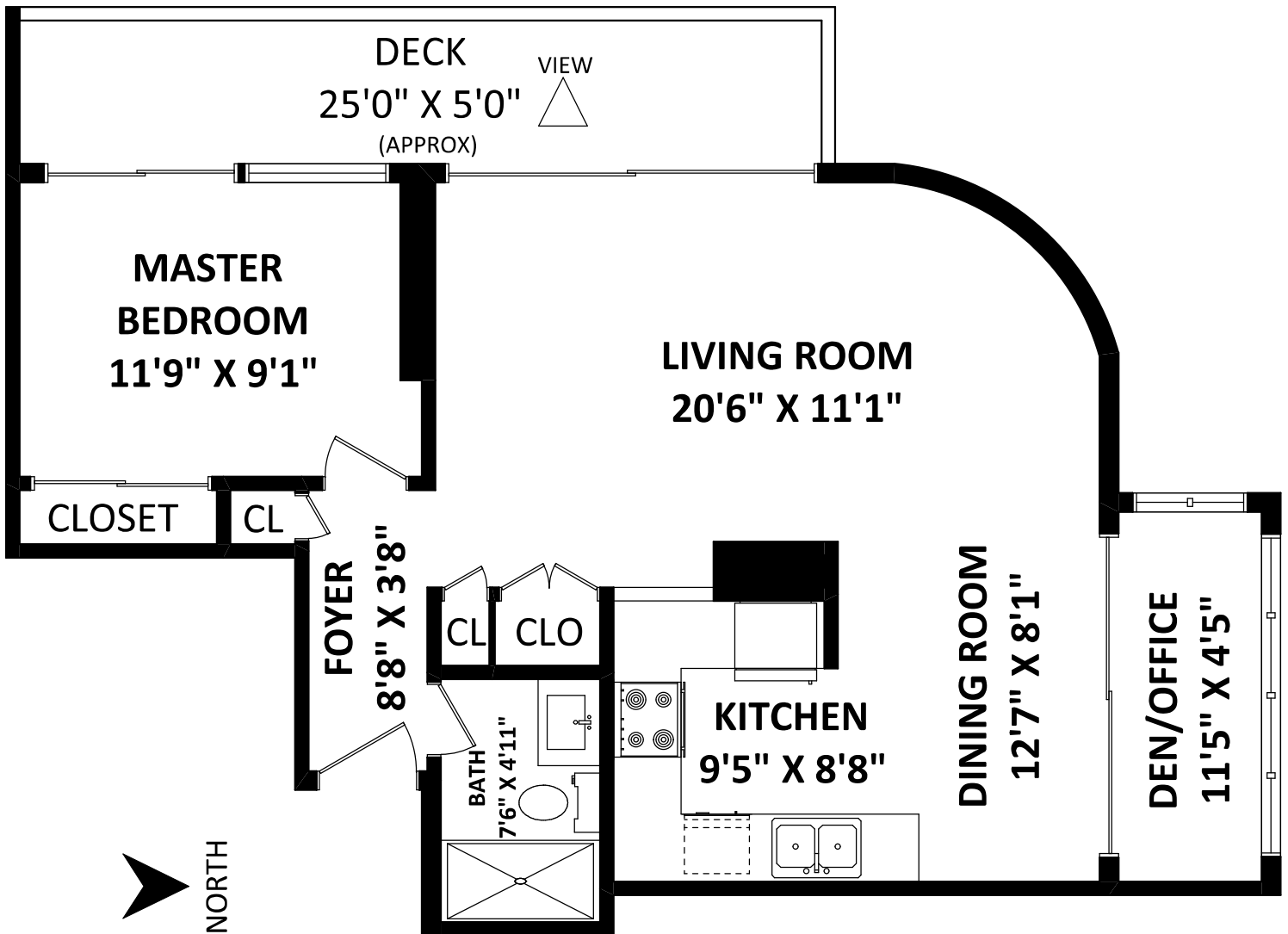
www.doneilers.com

TOTAL FINISHED AREA: 708 SQ.FT.

OTHER AREA(S)

DECK:

117 SQ.FT.*



0 2 5 10 FT

SCALE:



DISCLAIMER:

1. MEASUREMENTS ARE FOR PROMOTIONAL USE ONLY & ARE NOT INTENDED FOR CONSTRUCTION USE. ROOM DIMENSIONS ARE APPROXIMATE. MEASUREMENTS & CALCULATIONS FOR FINISHED AREAS ARE E&O INSURED.
 2. FINISHED AREAS ARE ENCLOSED AREAS IN A HOUSE THAT ARE SUITABLE FOR YEAR-ROUND USE, EMBODYING WALLS, FLOORS, AND CEILINGS THAT ARE SIMILAR TO THE REST OF THE HOUSE. (ANSI Z765-2003)
 3. THIS FLOOR PLAN MAY ONLY BE REPRODUCED WITH PERMISSION OF THE REALTOR(S) ON THIS FLOOR PLAN.
- * ANY MEASUREMENT WITH AN ASTERISK (*) OR (APPROX) ARE APPROXIMATE AND FOR ILLUSTRATION PURPOSES ONLY AND ARE NOT E&O INSURED.

FLOOR PLAN BY:

[AUGUST 2, 2017]



TEL: 604-575-1244

www.seevirtual360.com