

542 Granada Crescent,
North Vancouver, BC

TOTAL FINISHED AREA: 2692 SQ.FT.

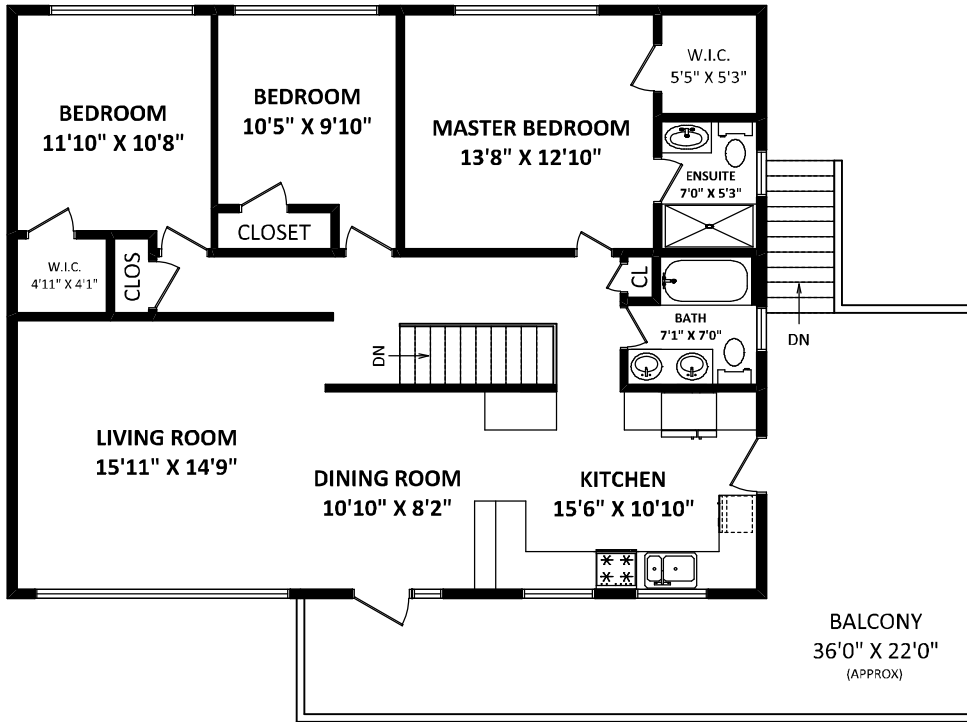
OTHER AREA(S)

GARAGE: 245 SQ.FT.
BALCONY: 438 SQ.FT.*

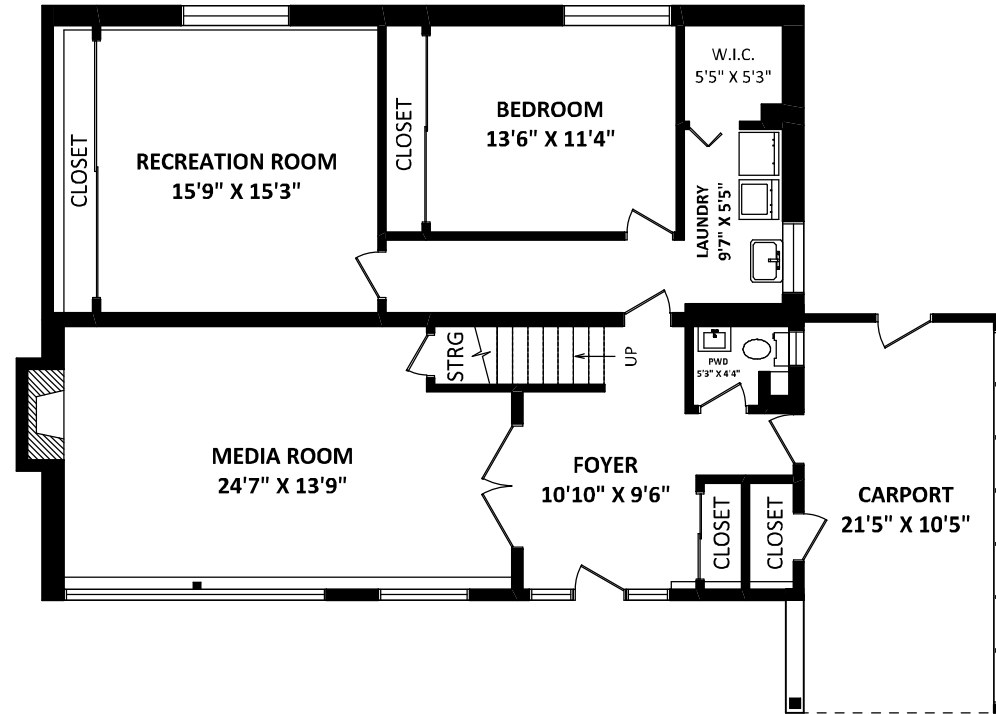


DON EILERS

Phone: 604-889-9449
don@doneilers.com
www.doneilers.com



MAIN FLOOR: 1352 SQ.FT.



LOWER FLOOR: 1340 SQ.FT.

FLOOR PLAN BY:
[APRIL 2, 2015]
 SEE VIRTUAL
TEL: 604-575-1244
www.seevirtual360.com

GENERAL NOTES:
1. MEASUREMENTS ARE FOR PROMOTIONAL USE ONLY & ARE NOT INTENDED FOR CONSTRUCTION USE. ROOM DIMENSIONS ARE APPROXIMATE. MEASUREMENTS & CALCULATIONS FOR FINISHED AREAS ARE E&O INSURED.
2. FINISHED AREAS ARE ENCLOSED AREAS IN A HOUSE THAT ARE SUITABLE FOR YEAR-ROUND USE. EMBODYING WALLS, FLOORS, AND CEILINGS THAT ARE SIMILAR TO THE REST OF THE HOUSE. (ANSI 2765-2003)
3. THIS FLOOR PLAN MAY ONLY BE REPRODUCED WITH PERMISSION OF THE REALTOR(S) ON THIS FLOOR PLAN.
* ANY MEASUREMENT WITH AN ASTERISK (*) OR (APPROX) ARE APPROXIMATE AND FOR ILLUSTRATION PURPOSES ONLY AND ARE NOT E&O INSURED.

