

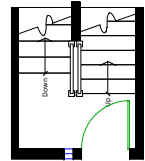
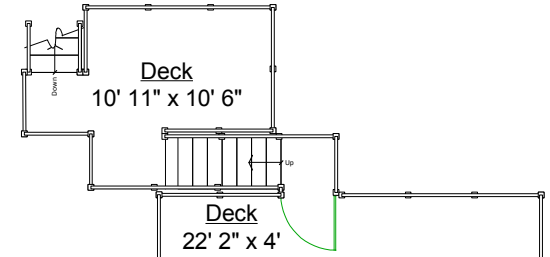
# 4158 Mt. Seymour Parkway, North Vancouver



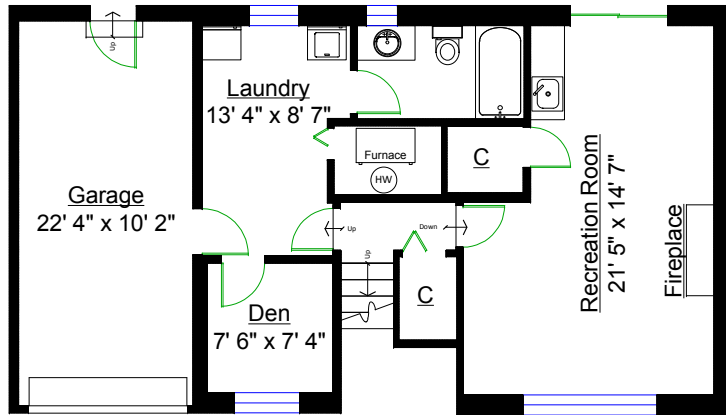
**PRESTIGE REALTY**  
 Patricia Houlihan  
 604-376-7653

### Totals\*\*

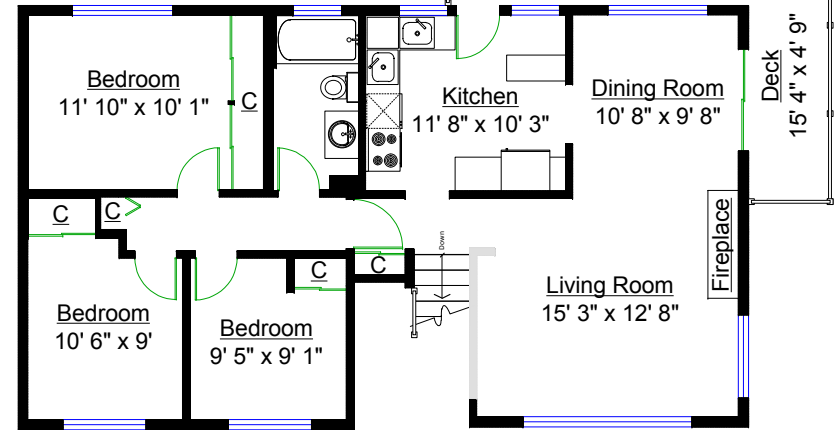
Main Level: 67 sq. ft.  
 Upper Level: 675 sq. ft.  
 Lower Level: 995 sq. ft.  
 TOTAL(FIN.): 1,737 sq. ft.  
 Closet(Unfin.): 16 sq. ft.  
 Mechanical: 25 sq. ft.  
 GRAND TOTAL: 1,778 sq. ft.



MAIN LEVEL



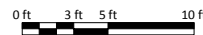
LOWER LEVEL



UPPER LEVEL

### Other Areas

Garage: 252 sq. ft.  
 Deck: 288 sq. ft.  
 TOTAL: 540 sq. ft.



\*\* Approx. based on interior measurements to exterior walls  
 \*\* Total square footage not taken from original blueprints  
 \*\* Includes under-height areas