

**13029 13th Avenue,**  
Surrey, BC



**RANDY AYERS**  
Real Estate Professional

**Coldwell Banker Prestige Realty**  
Mobile: 604.992.9576  
Office Phone: 604.971.2683  
randy@oceanparkhomes.ca  
www.oceanparkhomes.ca

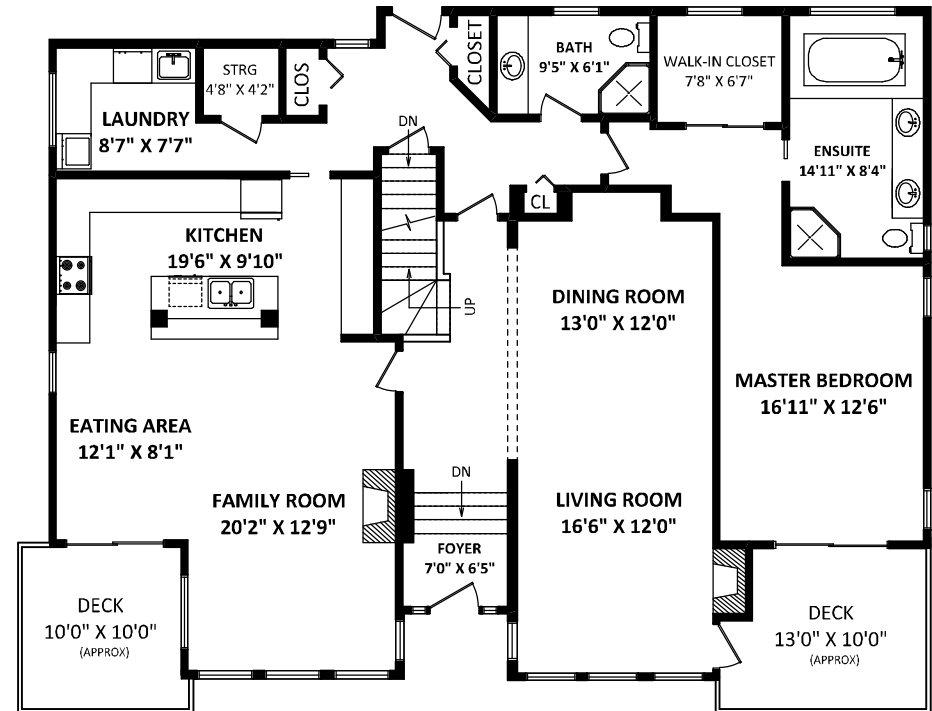
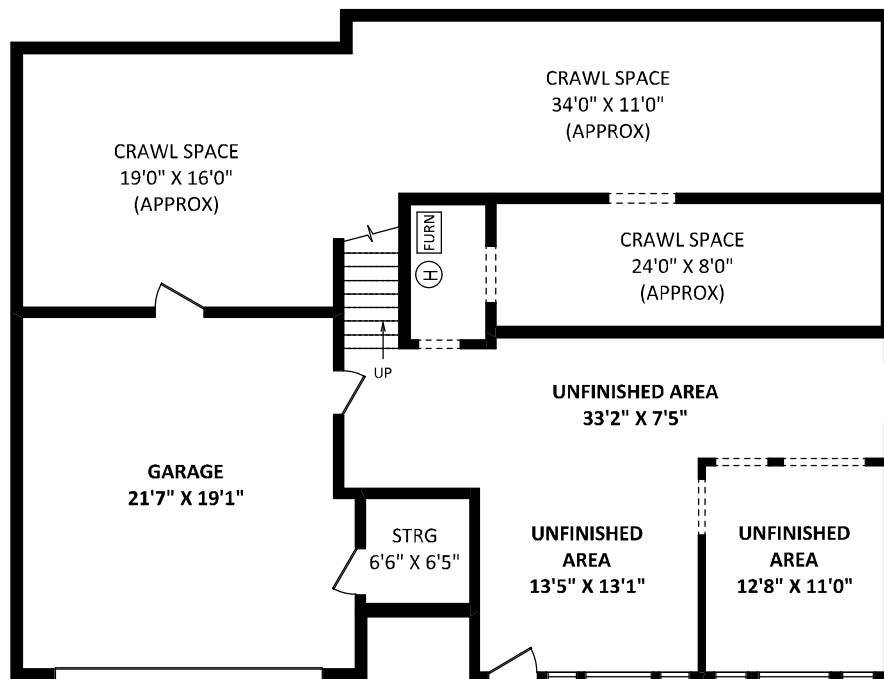
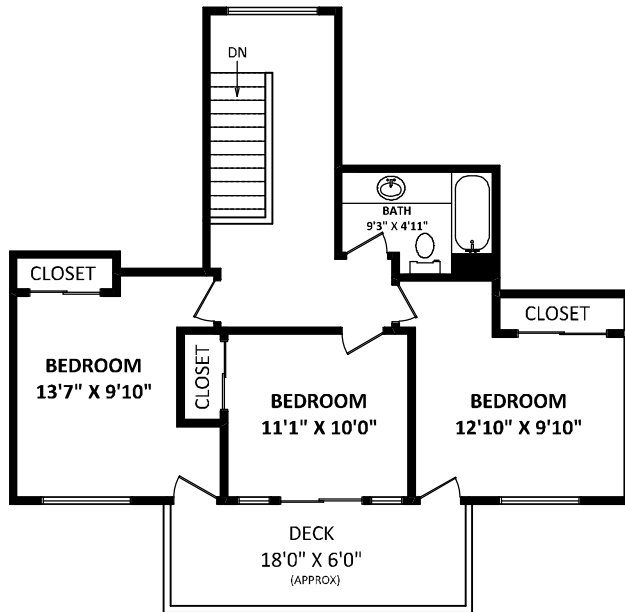


**PATRICIA HOULIHAN**  
Personal Real Estate Corporation

**Coldwell Banker Prestige Realty**  
Mobile: 604.376.7653  
Office Phone: 604.971.2683  
phoulihan@vancouverviews.ca  
www.vancouverviews.ca

**TOTAL FINISHED AREA: 2733 SQ.FT.**

<b>OTHER AREA(S)</b>	
UNFINISHED AREA:	696 SQ.FT.
GARAGE+STORAGE:	521 SQ.FT.
DECKS:	361 SQ.FT.*
CRAWL SPACE:	944 SQ.FT.*



GENERAL NOTES:  
1. MEASUREMENTS ARE FOR PROMOTIONAL USE ONLY & ARE NOT INTENDED FOR CONSTRUCTION USE. ROOM DIMENSIONS ARE APPROXIMATE. MEASUREMENTS & CALCULATIONS FOR FINISHED AREAS ARE E&O INSURED.  
2. FINISHED AREAS ARE ENCLOSED AREAS IN A HOUSE THAT ARE SUITABLE FOR YEAR-ROUND USE, EMBODYING WALLS, FLOORS, AND CEILINGS THAT ARE SIMILAR TO THE REST OF THE HOUSE. (ANSI Z765-2003)  
3. THIS FLOOR PLAN MAY ONLY BE REPRODUCED WITH PERMISSION OF THE REALTOR(S) ON THIS FLOOR PLAN.  
\* ANY MEASUREMENT WITH AN ASTERISK (\*) OR (APPROX) ARE APPROXIMATE AND FOR ILLUSTRATION PURPOSES ONLY AND ARE NOT E&O INSURED.

SCALE: 0 2 5 10 FT



FLOOR PLAN BY: [AUGUST 1, 2014]  
**SEEVIRTUAL**  
TEL: 604-575-1244  
www.seevirtual360.com