

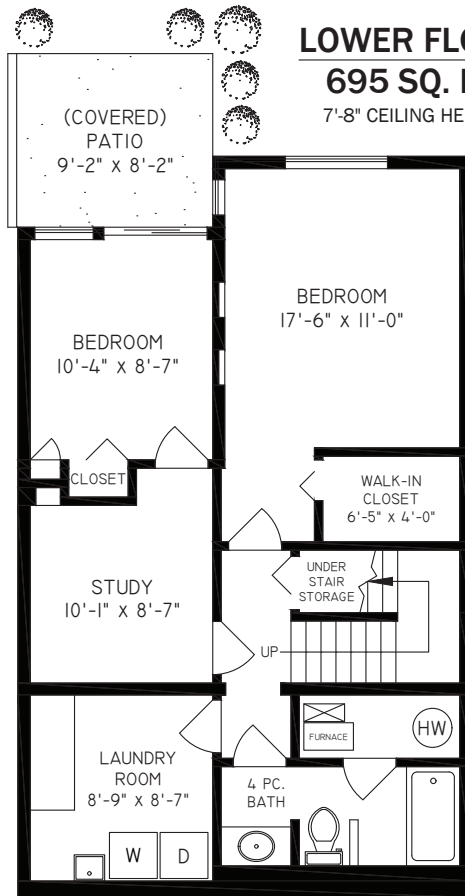
# DAVID VALENTE

Vancouver. North Shore.  
Real Estate.



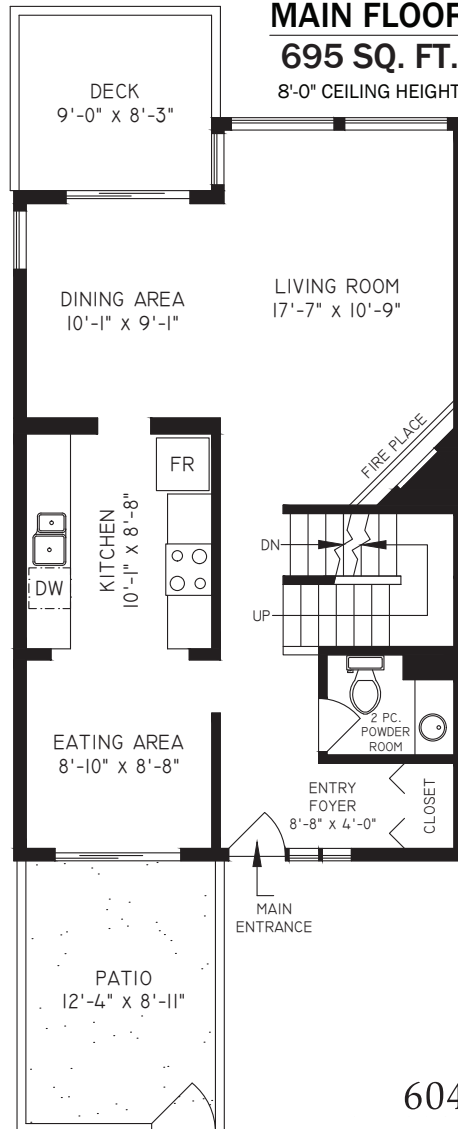
## LOWER FLOOR 695 SQ. FT.

7'-8" CEILING HEIGHT



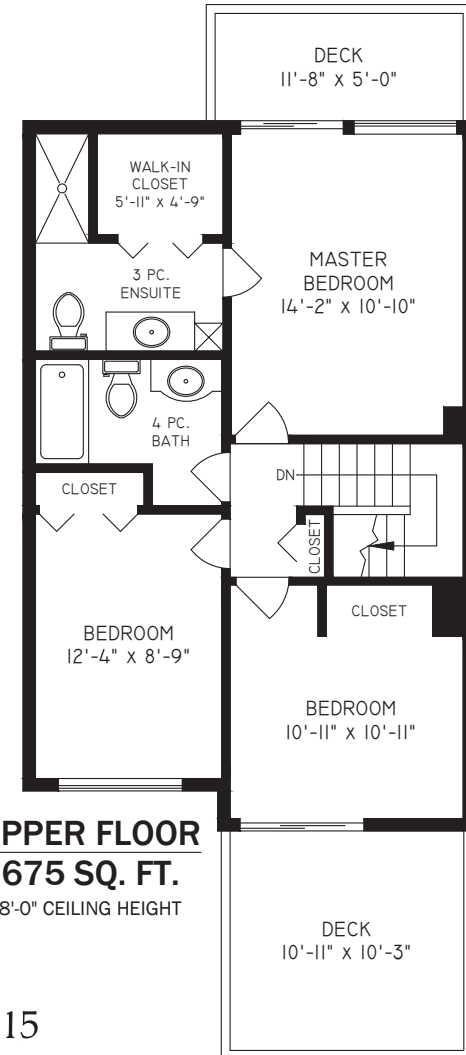
## MAIN FLOOR 695 SQ. FT.

8'-0" CEILING HEIGHT



## UPPER FLOOR 675 SQ. FT.

8'-0" CEILING HEIGHT



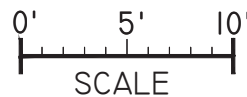
604.377.6015

DAVIDVALENTE.COM

### 1820 PURCELL WAY, NORTH VANCOUVER

FLOOR	AREA (SQ. FT.)	
	FINISHED	DECK/PATIO
MAIN	695	206
UPPER	675	193
LOWER	695	77
<b>TOTAL</b>	<b>2065</b>	<b>476</b>

 Booked on  
the Pixelink App™



 **TEAM 3000**  
REALTY LTD



THE REPRESENTED FLOOR PLANS ARE NOT SUITABLE FOR CONSTRUCTION/ARCHITECTURAL PURPOSES.  
EVERY EFFORT HAS BEEN MADE TO REPRESENT ALL DIMENSION ACCURATELY, & INSURED.