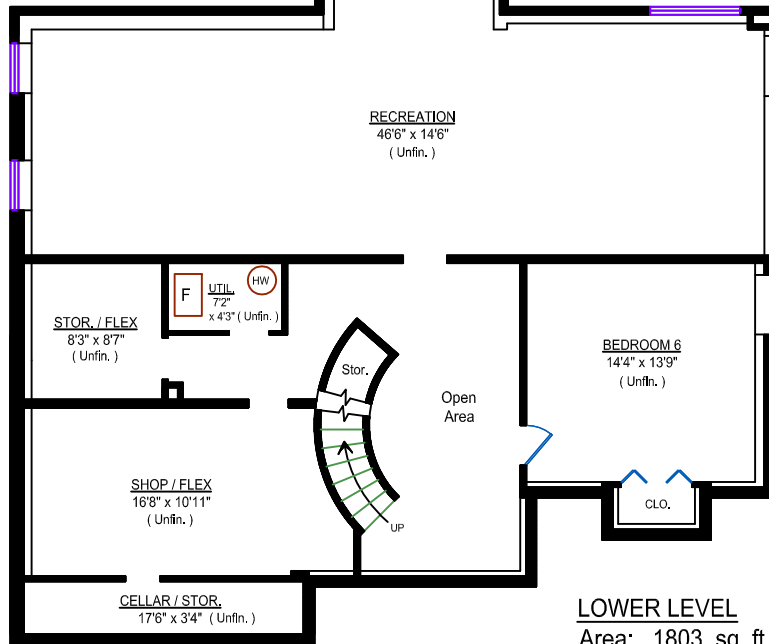
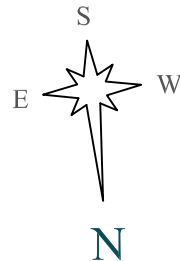


UPPER LEVEL
Area: 1583 sq. ft.

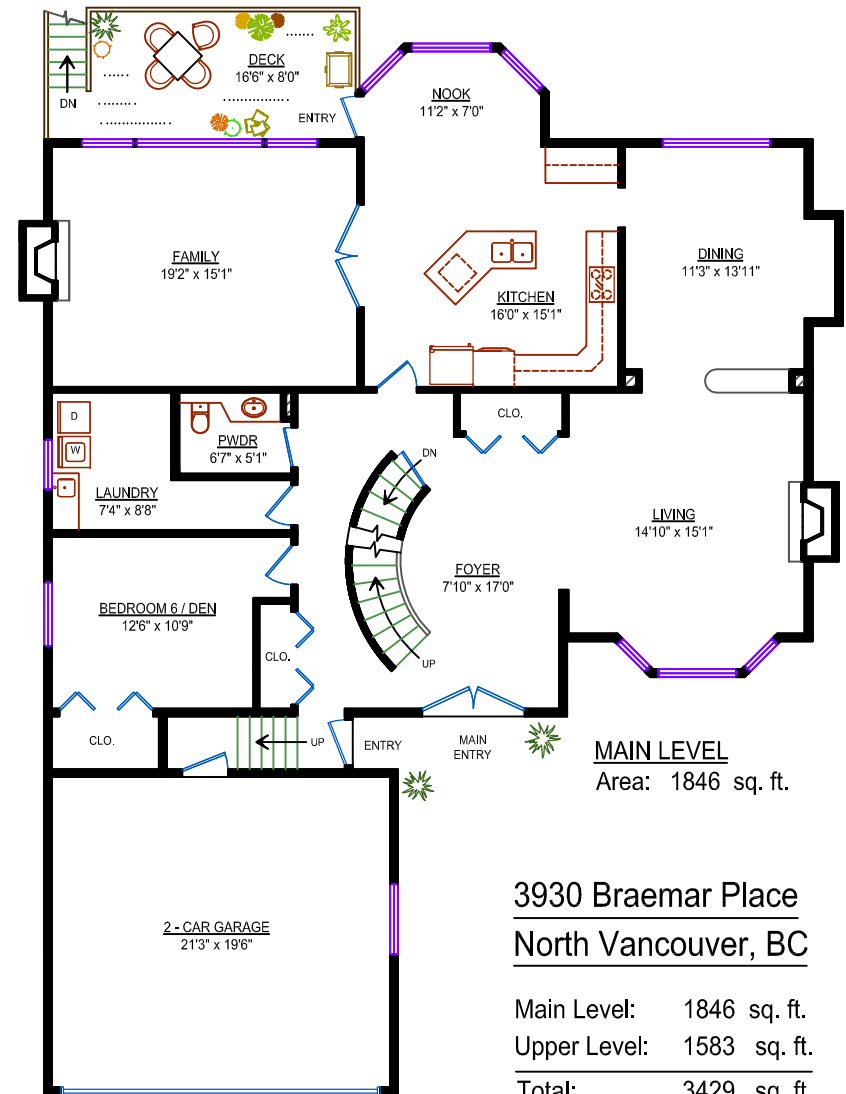


LOWER LEVEL
Area: 1803 sq. ft. (Unfin.)



DAVID VALENTE
YOUR VANCOUVER REAL ESTATE SPECIALIST

604.377.6015
 david@davidvalente.com
 www.davidvalente.com



3930 Braemar Place
North Vancouver, BC

Main Level: 1846 sq. ft.
 Upper Level: 1583 sq. ft.
 Total: 3429 sq. ft.

* Lower Level: 1803 sq. ft. (Unfinished)

* Grand Total: 5232 sq. ft.

* includes some low level areas

Other Areas: (not included in total sq. ft.)

Deck: (Main - Back) 149 sq. ft.
 Deck: (Upper - Front) 169 sq. ft.
 Garage: 455 sq. ft.

