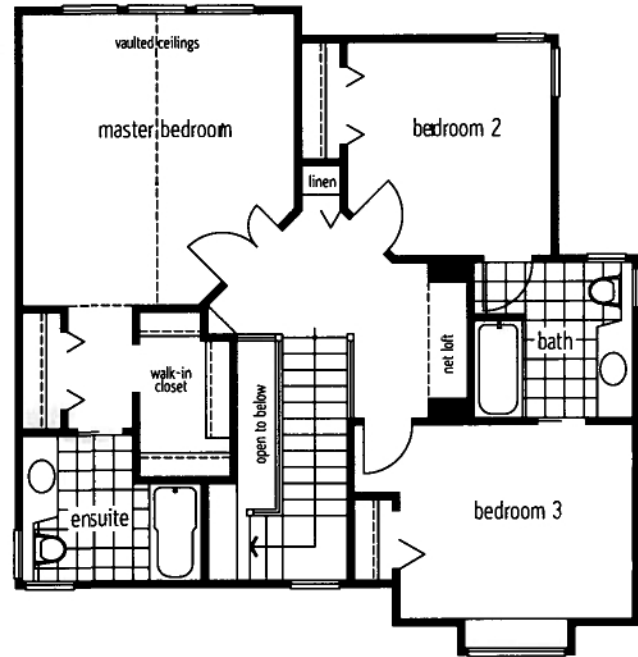


B

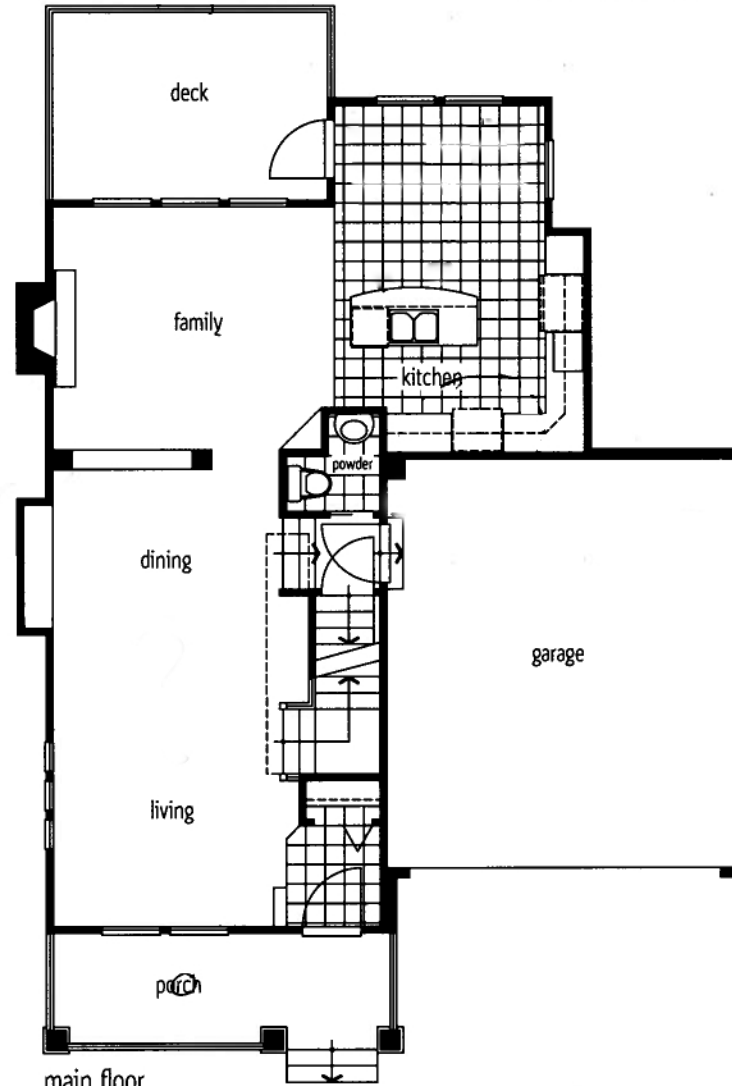
1700 sq. ft.  
plus 868 sq.ft. unfinished basement

**DAVID VALENTE**  
Committed Service. Real Estate SALES.

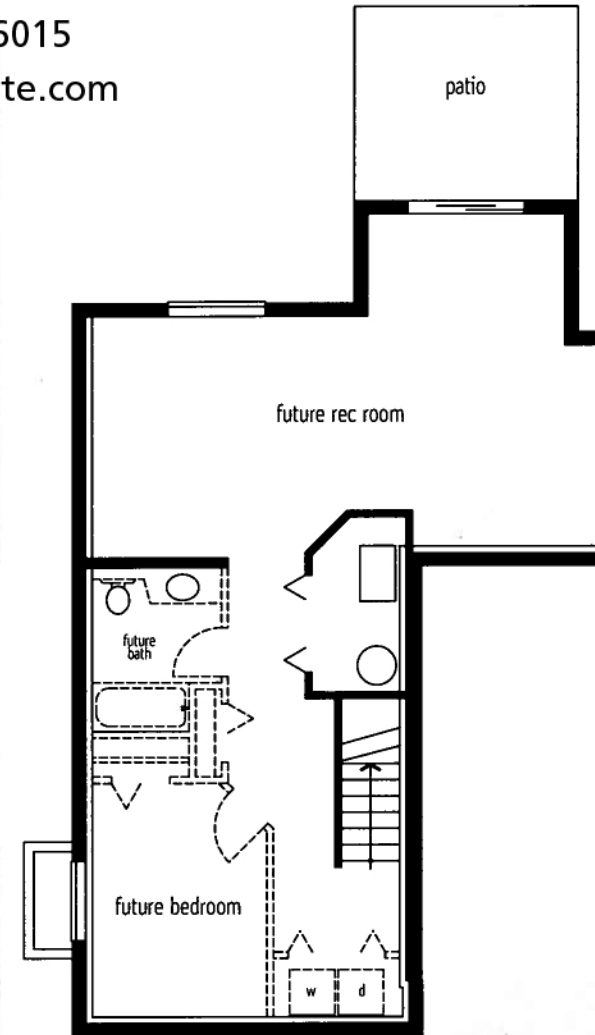
Phone: 604-377-6015  
www.davidvalente.com



upper floor  
832 sq.ft.

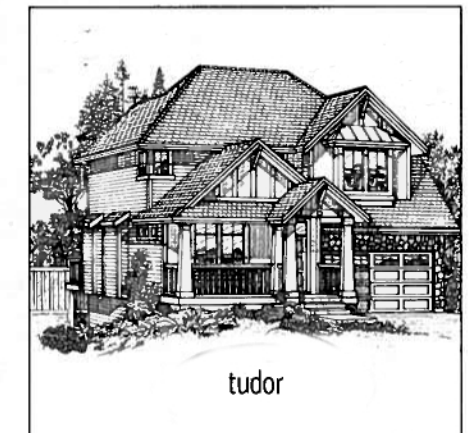


main floor  
868 sq.ft.



basement  
868 sq.ft.

*Enjoy the sunny warmth of your spacious island kitchen and breakfast nook with access to the outdoor deck and adjoining family room. This popular plan also offers adjoining Jack and Jill baths connecting the kids' bedrooms, vaulted ceilings and a front porch for those warm summer nights.*



tudor