

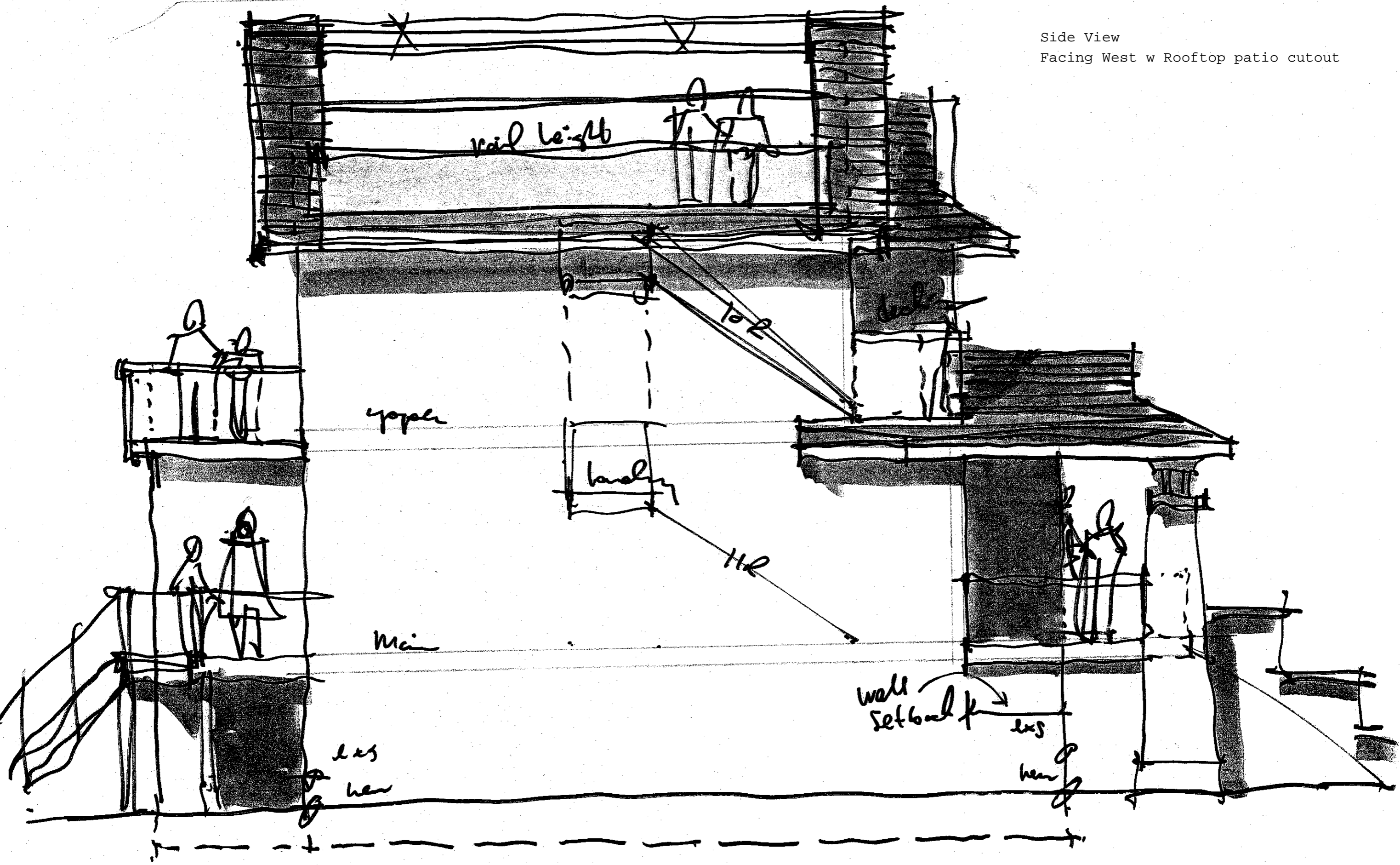
Front Facade
3226 W 7th Ave

Facade



Max 15'

Side View
Facing West w Rooftop patio cutout



Main Floor

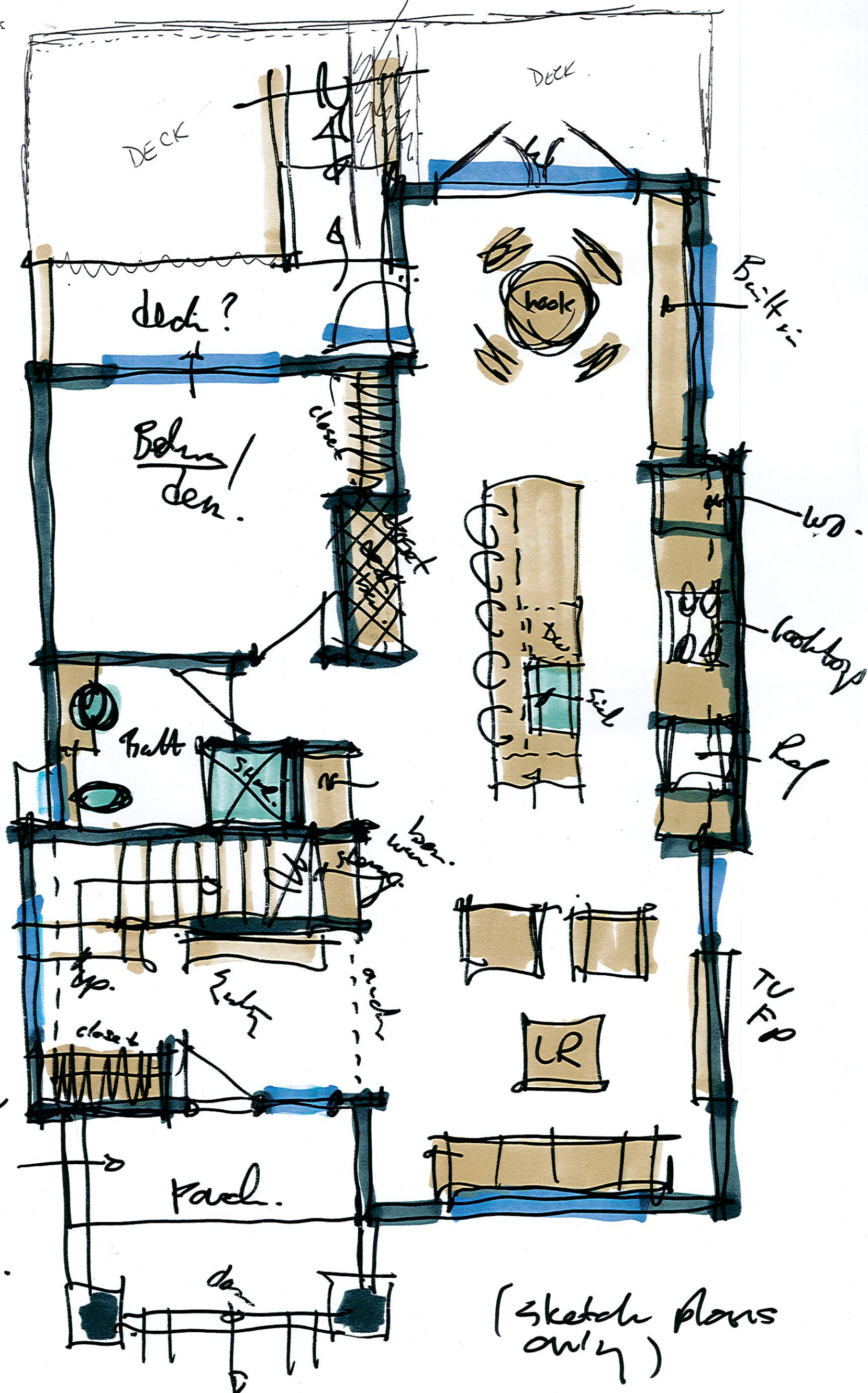
Entry w stairs up

Open Kitchen w nook

Den out to back deck

1 full bath off den

stairs (1-2)



retain area for porch.

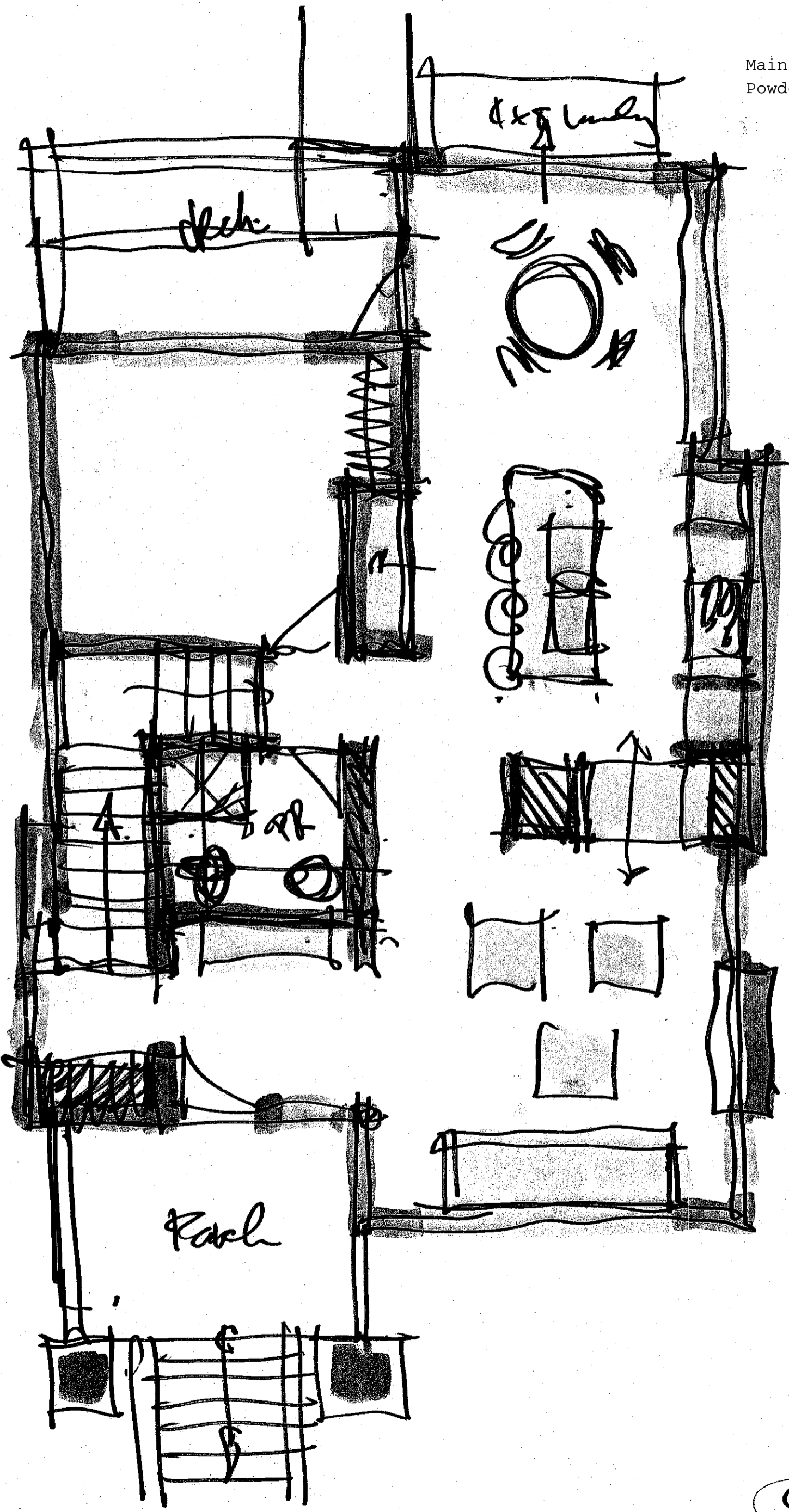
(Sketch plans only)

MF

Street (width)

Main Level
Powder Room

low
stair

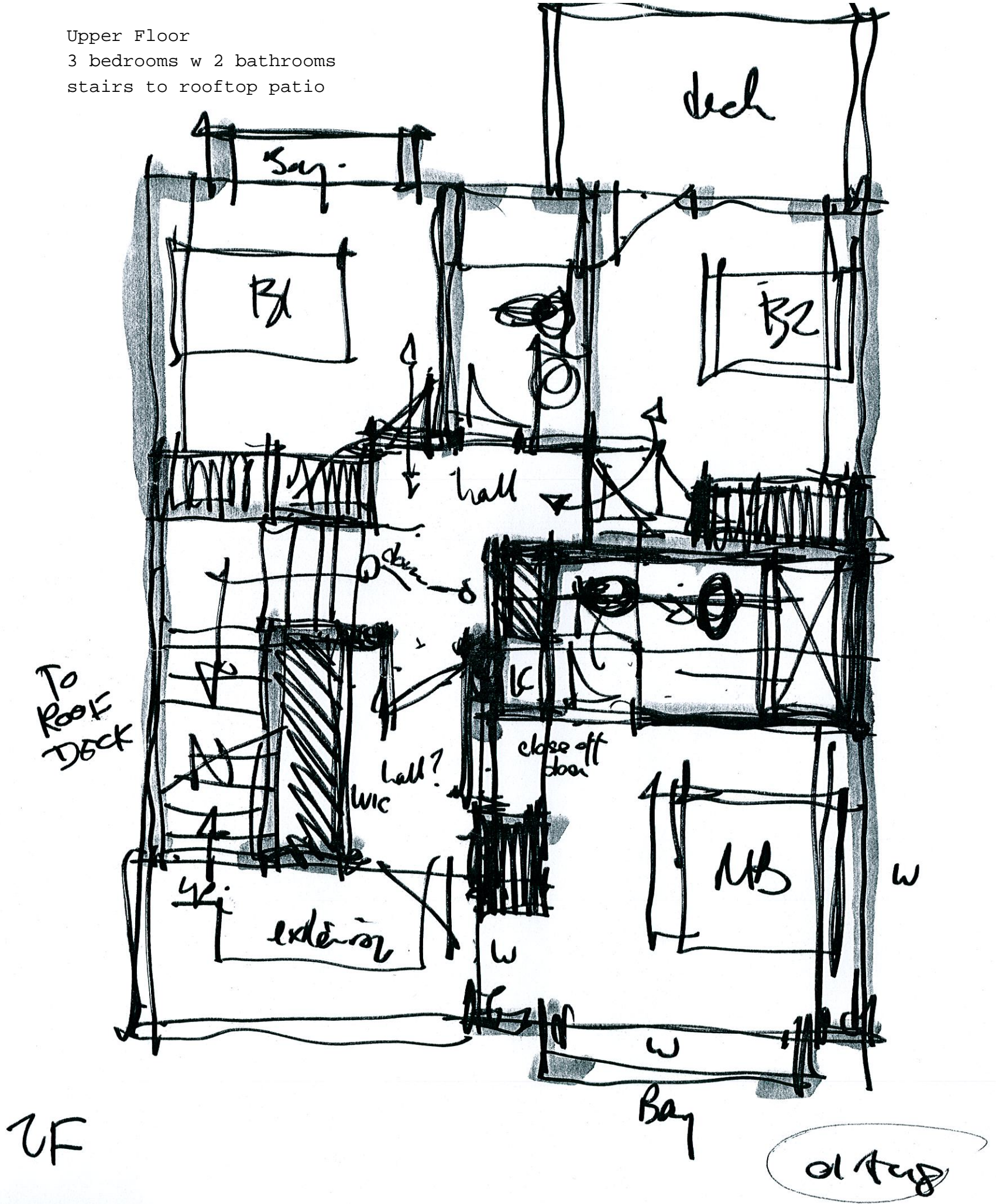


Main
low
01 Aug

Upper Floor

3 bedrooms w 2 bathrooms

stairs to rooftop patio

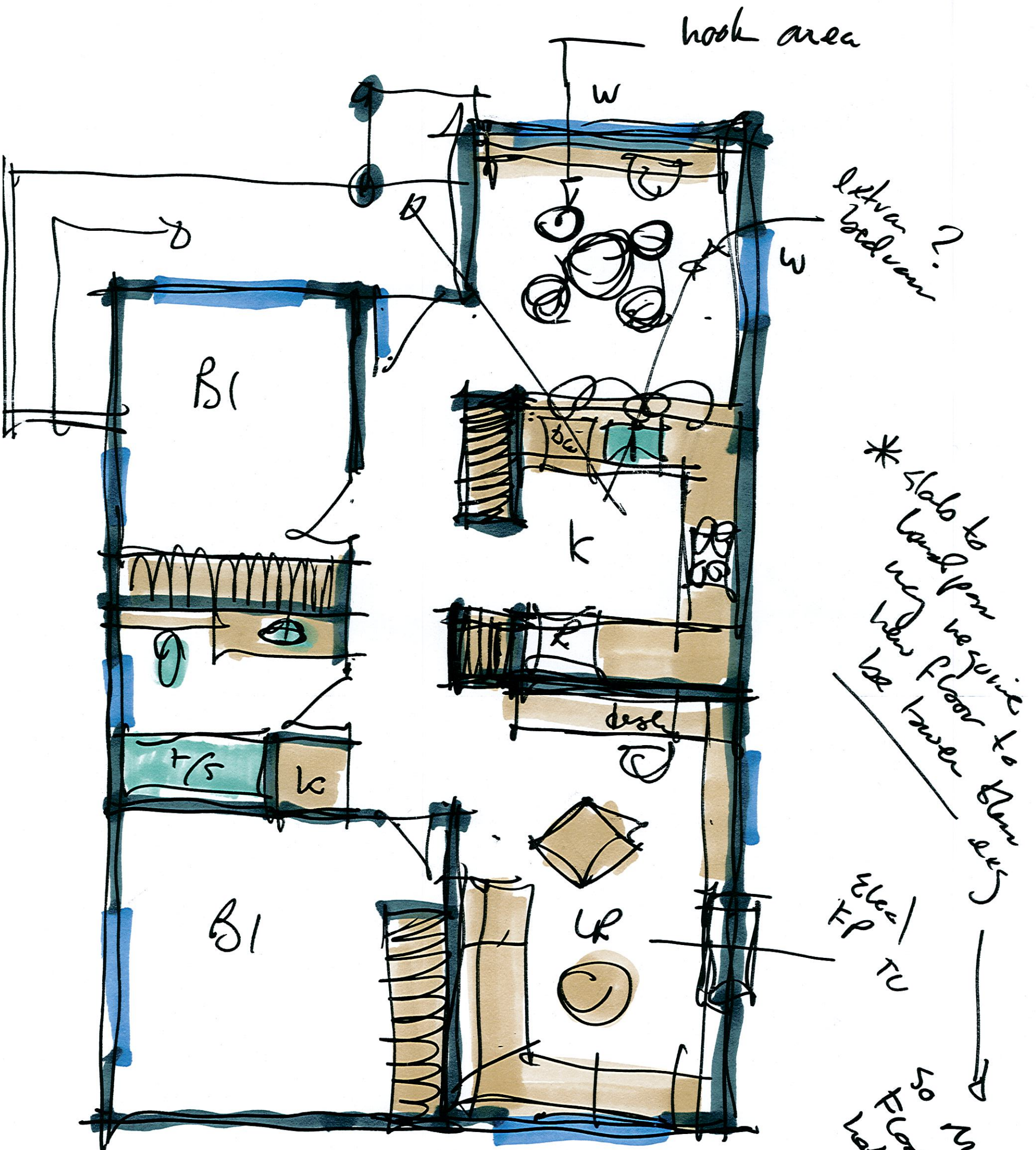


UF

ol Aug

Unit (south)

2 Bedroom Basement Suite



let's have
bedroom?

*slab to
land from
upper floor
lower
be lower
of levels

steel
FP
TU

50
FP
for
25
w.i.

Bsmt

(Sketch phase
only)