

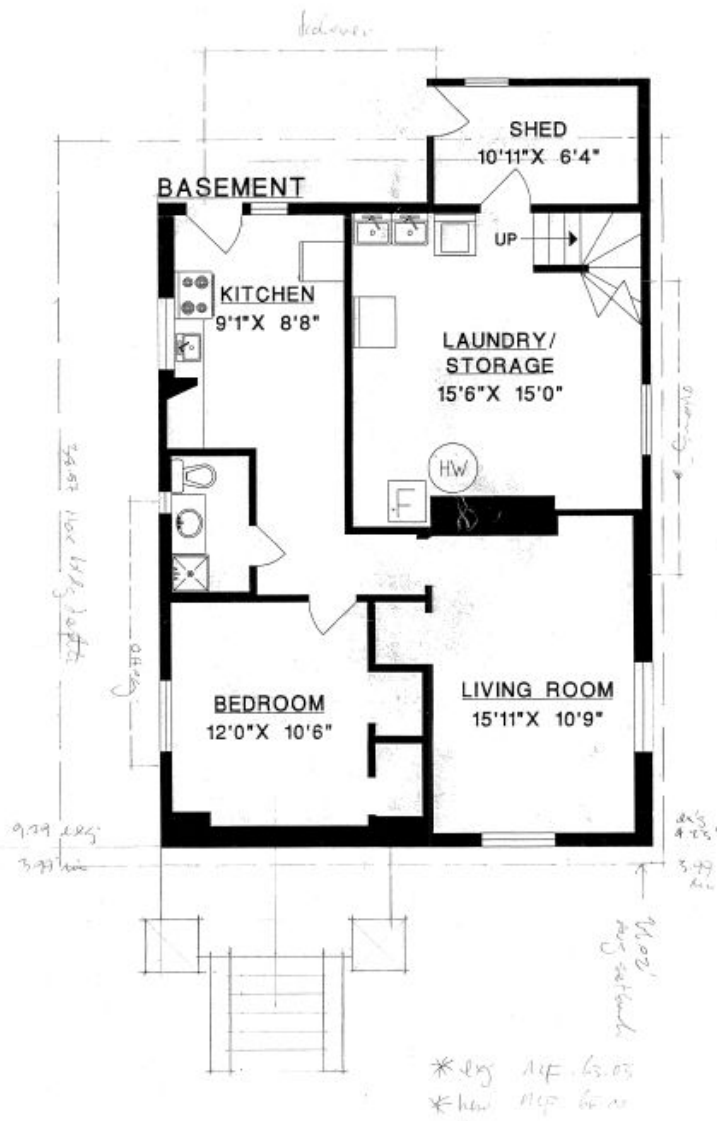


3226 W. 7th Avenue Vancouver, BC

MAIN FLOOR	1060 SQ. FT.
BASEMENT*	913 SQ. FT.
TOTAL	1973 SQ. FT.

DECK	98 SQ. FT.
PORCH	35 SQ. FT.
SHED	81 SQ. FT.

*Includes limited ceiling heights.



Basement Plan



Main Floor Plan