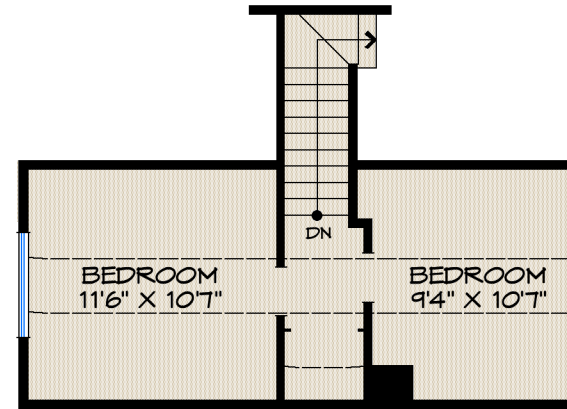


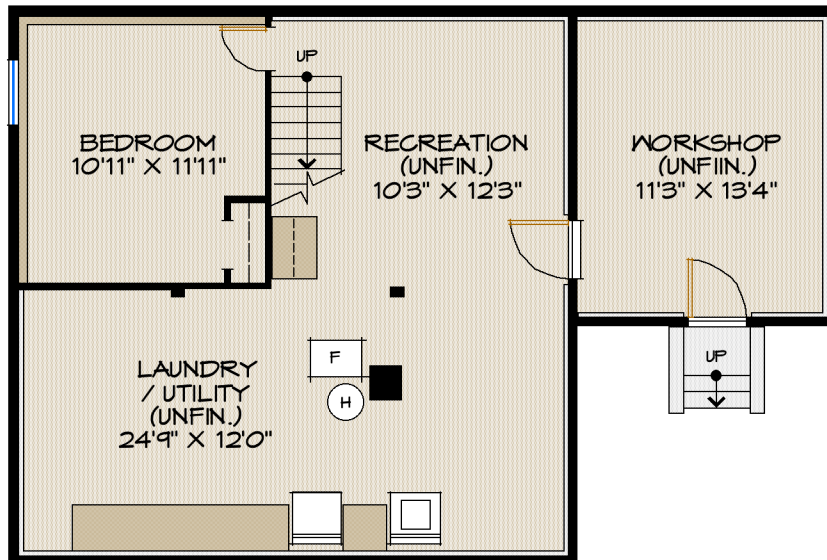
**4016 RUPERT STREET
VANCOUVER, BC**

UPPER LEVEL (6'11" CLEAR):	327 S.F.
MAIN LEVEL:	844 S.F.
LOWER LEVEL: (5'11" CLEAR):	156 S.F.
TOTAL FINISHED FLOOR AREA:	1,327 S.F.
UNFINISHED LOWER LEVEL (6'1" CLEAR):	688 S.F.
TOTAL FLOOR AREA:	2,015 S.F.
GARAGE:	448 S.F.

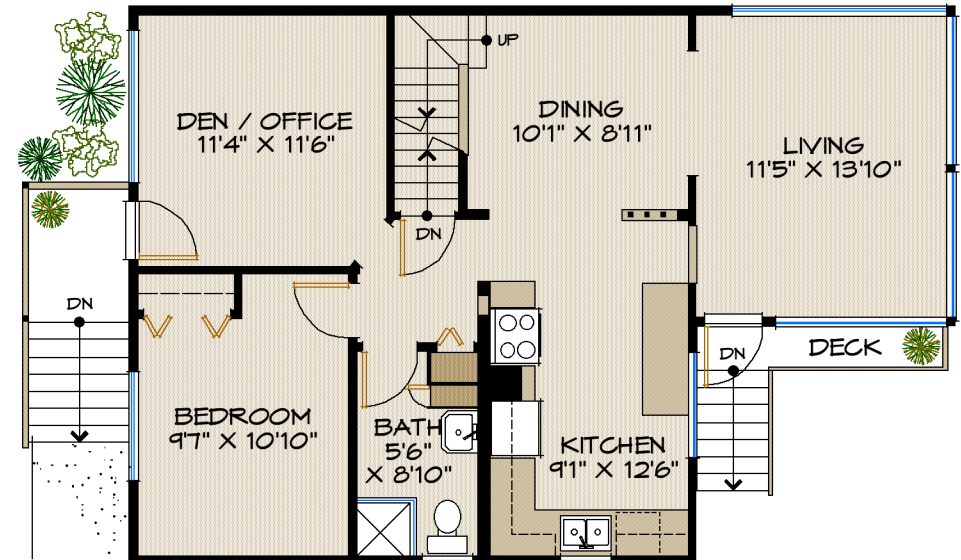
ALL AREAS AND DIMENSIONS ARE APPROXIMATE AND NOT GUARANTEED AND SHOULD BE CONFIRMED BY THE BUYER.



UPPER LEVEL



LOWER LEVEL



MAIN LEVEL