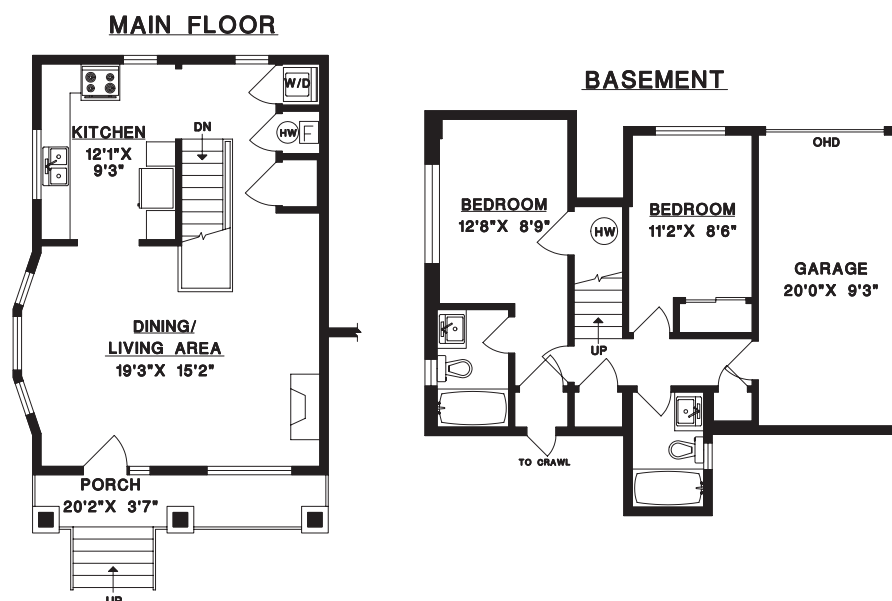


2979 Ontario St. Vancouver, BC

Main Floor	598 sq. ft.
Basement	515 sq. ft.
TOTAL *	1113 sq. ft.
Garage	208 sq. ft.
Porch	64 sq. ft.

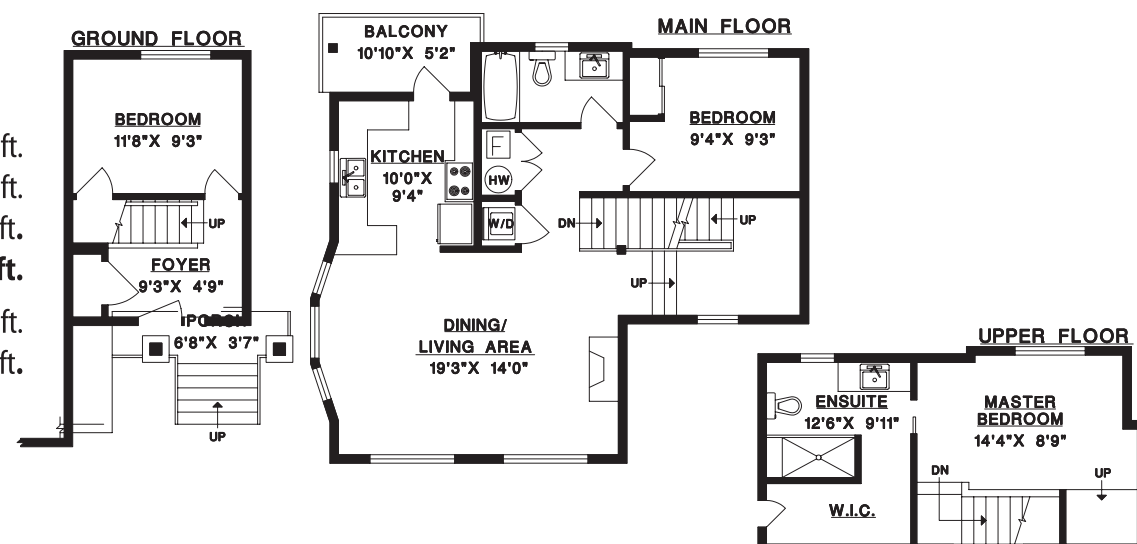
*Area calculations taken to exterior of exterior walls



2971 Ontario St. Vancouver, BC

Upper Floor	366 sq. ft.
Main Floor	805 sq. ft.
Basement	243 sq. ft.
TOTAL *	1414 sq. ft.
Balcony	54 sq. ft.
Porch	35 sq. ft.

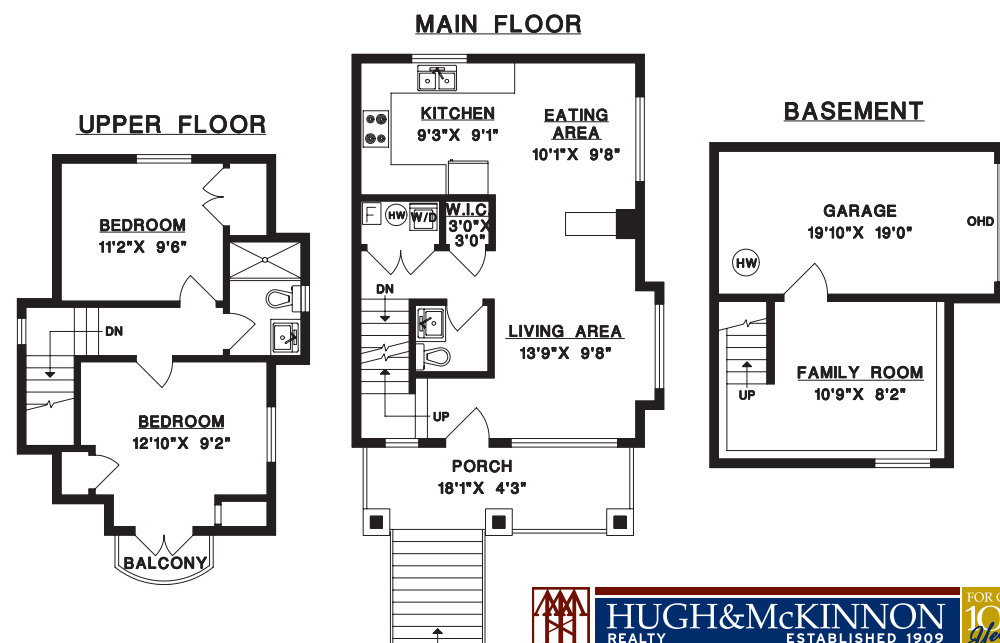
*Area calculations taken to exterior of exterior walls



19 W.14th Ave. Vancouver, BC COACH HOUSE

Upper Floor	400 sq. ft.
Main Floor	554 sq. ft.
Basement	200 sq. ft.
TOTAL *	1154 sq. ft.
Garage	212 sq. ft.
Balcony	18 sq. ft.
Porch	95 sq. ft.

*Area calculations taken to exterior of exterior walls



2971-2979 Ontario Street and 19 West 14th Avenue

\$3,496,950

Located in the vibrant family-friendly Mount Pleasant neighbourhood.
Property consists of duplex and coach house -3 Strata Homes in a single investment.
Classic craftsman architecture with modern interiors allows for great flow; light and space.
Attached garages, covered porches and quality finishes.

Becca Auld
askbeccarealestate@gmail.com
604-805-7978
www.rebeccaauld.com

Beebe Cline
bcline@shaw.ca
604-830-7458
www.whiterocklifestyles.com

