

**#108 1710 West 13th Avenue,**  
**Vancouver, BC**



**MICHAEL DOWLING**

*RE/MAX Crest Realty Westside*

Phone: 604-684-6155

Cell: 604-787-5568

mdowling@telus.net

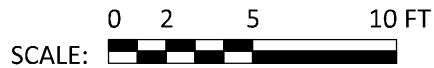
www.MichaelDowling.ca

**TOTAL FINISHED AREA: 1054 SQ.FT.**

OTHER AREA(S)

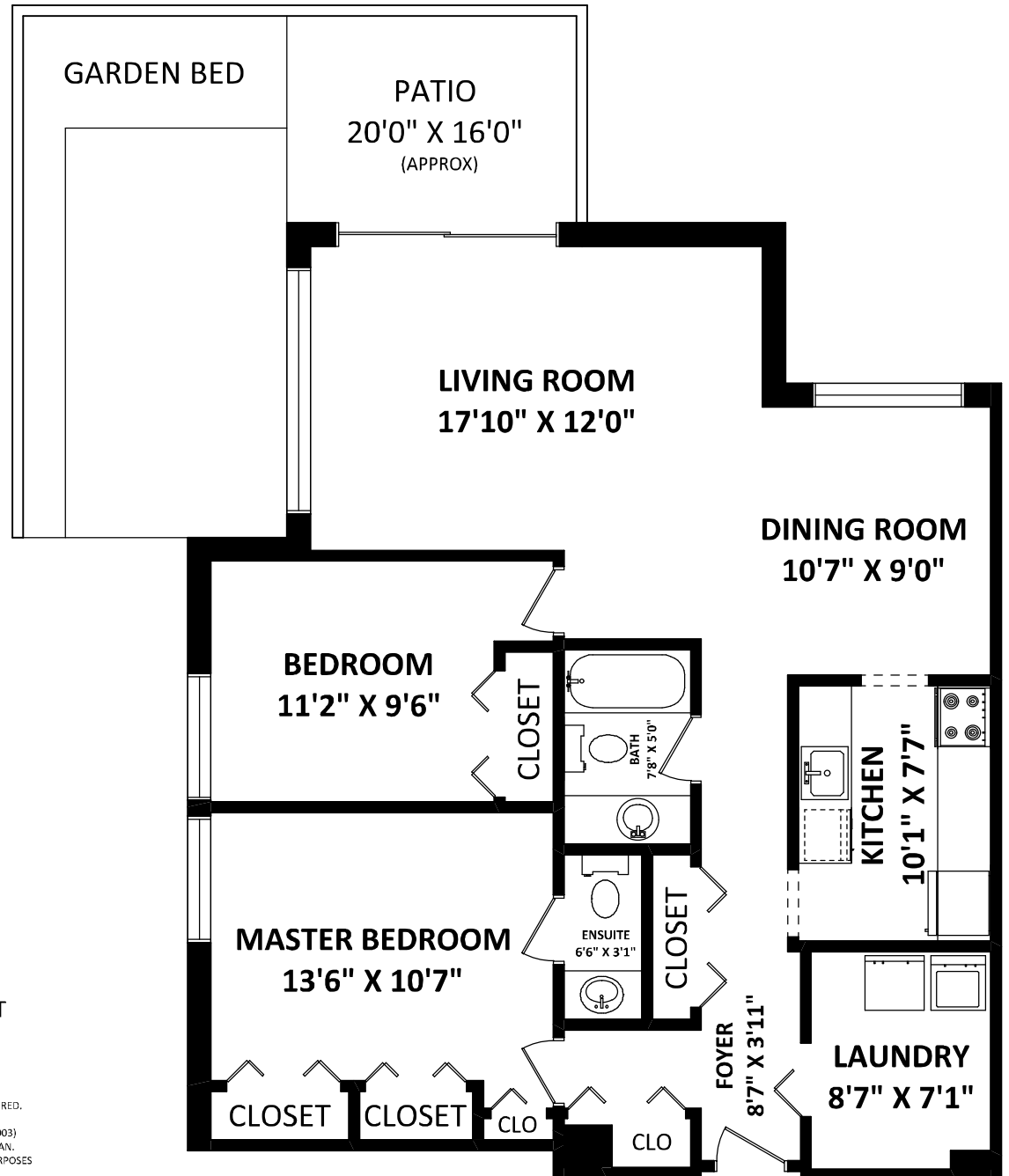
PATIO: 240 SQ.FT.\*

NORTH



GENERAL NOTES:

1. MEASUREMENTS ARE FOR PROMOTIONAL USE ONLY & ARE NOT INTENDED FOR CONSTRUCTION USE. ROOM DIMENSIONS ARE APPROXIMATE. STRATA PLAN SQUARE FOOTAGE FOR THIS UNIT IS NOT E&O INSURED.
  2. FINISHED AREAS ARE ENCLOSED AREAS IN A HOUSE THAT ARE SUITABLE FOR YEAR-ROUND USE. EMBODYING WALLS, FLOORS, AND CEILINGS THAT ARE SIMILAR TO THE REST OF THE HOUSE. (ANSI 2765-2003)
  3. THIS FLOOR PLAN MAY ONLY BE REPRODUCED WITH PERMISSION OF THE REALTOR(S) ON THIS FLOOR PLAN.
- \* ANY MEASUREMENT WITH AN ASTERISK (\*) OR (APPROX) ARE APPROXIMATE AND FOR ILLUSTRATION PURPOSES ONLY AND ARE NOT E&O INSURED.



FLOOR PLAN BY:

[AUGUST 20, 2014]



TEL: 604-575-1244

www.seevirtual360.com