

FIRST SHEET, SHEET 1 OF 12 SHEETS

# STRATA PLAN OF LOT "E", BLOCK 51, Vr 992 D.L. 185, PLAN 18823, GP.1, N.W.D.

STRATA PLAN VR  
DEPOSITED AND REGISTERED IN  
THE LAND TITLE OFFICE AT  
VANCOUVER, B.C.  
THIS 13<sup>th</sup> DAY OF October 1981.

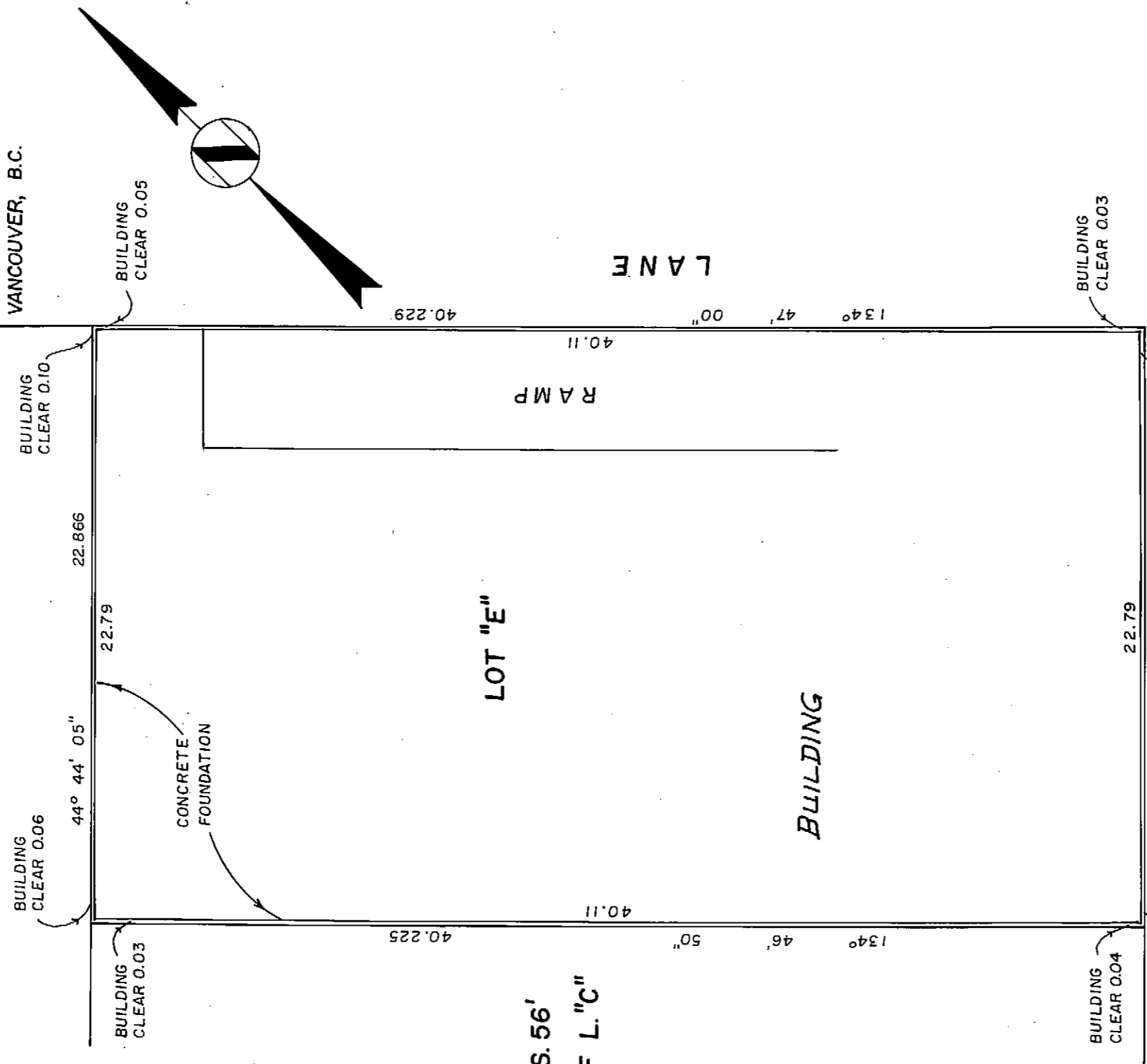


SCALE 1:200

*W.P. Ridgway*  
ASSISTANT DEPUTY REGISTRAR

CITY OF VANCOUVER.

CIVIC ADDRESS:  
1279 NICOLA STREET,  
VANCOUVER, B.C.



- LEGEND**
- m<sup>2</sup> DENOTES SQUARE METRES
  - S.L. DENOTES STRATA LOT
  - PT. DENOTES PART OF STRATA LOT
  - © DENOTES COMMON PROPERTY
  - ⓑ DENOTES BALCONY
  - Ⓟ DENOTES PATIO
  - Ⓡ DENOTES CHIMNEY FLUE
  - Ⓢ DENOTES LIMITED COMMON PROPERTY
- THIS STRATA PLAN CONTAINS LIMITED COMMON PROPERTY.
- PERSUANT TO SECTION 53(2) CONDOMINIUM ACT.  
THE ADDRESS FOR SERVICE OF DOCUMENTS  
ON THE STRATA CORPORATION IS : VR. 992

I, DIETER SOUKUP OF SURREY,  
BRITISH COLUMBIA LAND SURVEYOR, HEREBY  
CERTIFY THAT THE BUILDING ERECTED  
ON THE PARCEL DESCRIBED ABOVE LIES  
WHOLLY WITHIN THE EXTERNAL BOUNDARIES  
OF THAT PARCEL.  
DATED AT VANCOUVER, B.C.  
THIS 4<sup>th</sup> DAY OF AUGUST, 1981.

*Dieter Soukup* B.C.L.S.  
MELHANNY ASSOCIATES  
PROFESSIONAL LAND SURVEYORS  
1166 ALBERNI STREET  
VANCOUVER, B.C. V6E 1A5  
FILE 33077-0

THE OWNERS, STRATA PLAN  
1177 W. 8<sup>th</sup> AVENUE,  
VANCOUVER, B.C.

SECOND SHEET, SHEET 2 OF 12 SHEETS

STRATA TITLES ACT STRATA PLAN VR 992

LOT NO.	SHEET NO.	FORM 1		FORM 2		FORM 3	
		SCHEDULE OF UNIT ENTITLEMENT	INTEREST UPON DESTRUCTION	SCHEDULE OF INTEREST UPON DESTRUCTION	SCHEDULE OF VOTING RIGHTS		
		UNIT ENTITLEMENT	INTEREST UPON DESTRUCTION	INTEREST UPON DESTRUCTION	NUMBER OF VOTES		
1	4, 5, 6, 7	5841		5926			
2	4, 5, 6, 7	5351		4736			
3	4, 5, 6, 7	5422		4736			
4	4, 5, 6, 7	5776		5355			
5	4, 5, 6, 7	4250		3546			
6	4, 5, 6, 7	4219		3546			
7	4, 5, 6, 7	5932		5926			
8	4, 5, 6, 7	5998		5926			
9	4, 5, 6, 7	4957		4736			
10	4, 5, 8, 9	5801		6545			
11	4, 5, 8, 9	5558		6187			
12	4, 5, 8, 9	5609		6187			
13	4, 5, 8, 9	5831		6545			
14	4, 5, 8, 9, 10	5953		6187			
15	4, 5, 8, 9, 10	5907		6187			
16	4, 5, 8, 9, 10	5863		6187			
17	4, 5, 8, 9, 10	6089		6187			
18	4, 5, 8, 9, 10	5543		5355			
	AGGREGATE	100,000		100,000			

OWNERS - DEVELOPERS  
**H. HAEBLER CO. LTD.**  
 (INCORPORATION NO. 442821)  
*H. Haebler, Inc.*  
**H. HAEBLER**

THE MERCANTILE BANK OF CANADA

*Deborah Drake*  
 DEBORAH DRAKE  
 N/A ACCOUNT MANAGER  
*William George Davis*  
 WILLIAM GEORGE DAVIS  
 ASSISTANT VICE PRESIDENT  
 Attorneys on behalf of the  
 Mercantile Bank of Canada

*witness to both signatures*  
*Laurie Dick*  
 LAURIE DICK  
 4102 - 5255 FRENCH ST.  
 VANCOUVER, B.C. V6P 4W6  
 CORPORATE SECRETARY

STATUTORY DECLARATION

I, THE UNDERSIGNED DO SOLEMNLY DECLARE THAT  
 (1) I, THE UNDERSIGNED AM THE DULY AUTHORIZED  
 AGENT OF THE OWNER DEVELOPER.  
 (2) THE STRATA PLAN IS ENTIRELY FOR RESIDENTIAL USE.

I, MAKE THIS SOLEMN DECLARATION CONSCIENTIOUSLY  
 BELIEVING IT TO BE TRUE AND KNOWING THAT IT IS OF  
 THE SAME FORCE AND EFFECT AS IF MADE UNDER OATH.

*H. Haebler*  
**H. HAEBLER**  
 DECLARED BEFORE ME AT ~~Vancouver~~  
 IN THE PROVINCE OF BRITISH COLUMBIA  
 THIS 6<sup>th</sup> DAY OF August 1981

*John Yellie*  
**A COMMISSIONER FOR TAKING AFFIDAVITS**  
 WITHIN THE PROVINCE OF BRITISH COLUMBIA

ACCEPTED AS TO FORMS 1, 2 AND 3  
*John Yellie*  
 John Yellie  
 SUPERINTENDENT OF INSURANCE

I, DIETER SOUKUP OF SURREY, BRITISH COLUMBIA  
 LAND SURVEYOR, HEREBY CERTIFY THAT THE BUILDING  
 SHOWN ON THIS STRATA PLAN HAS NOT, AS OF THE  
 4<sup>th</sup> DAY OF AUG. 1981 BEEN PREVIOUSLY OCCUPIED.  
 DATED AT VANCOUVER, BRITISH COLUMBIA  
 THIS 4<sup>th</sup> DAY OF AUGUST, 1981.

*Dieter Soukup*  
 Dieter Soukup  
 B.C.L.S.

FILE 33077-0

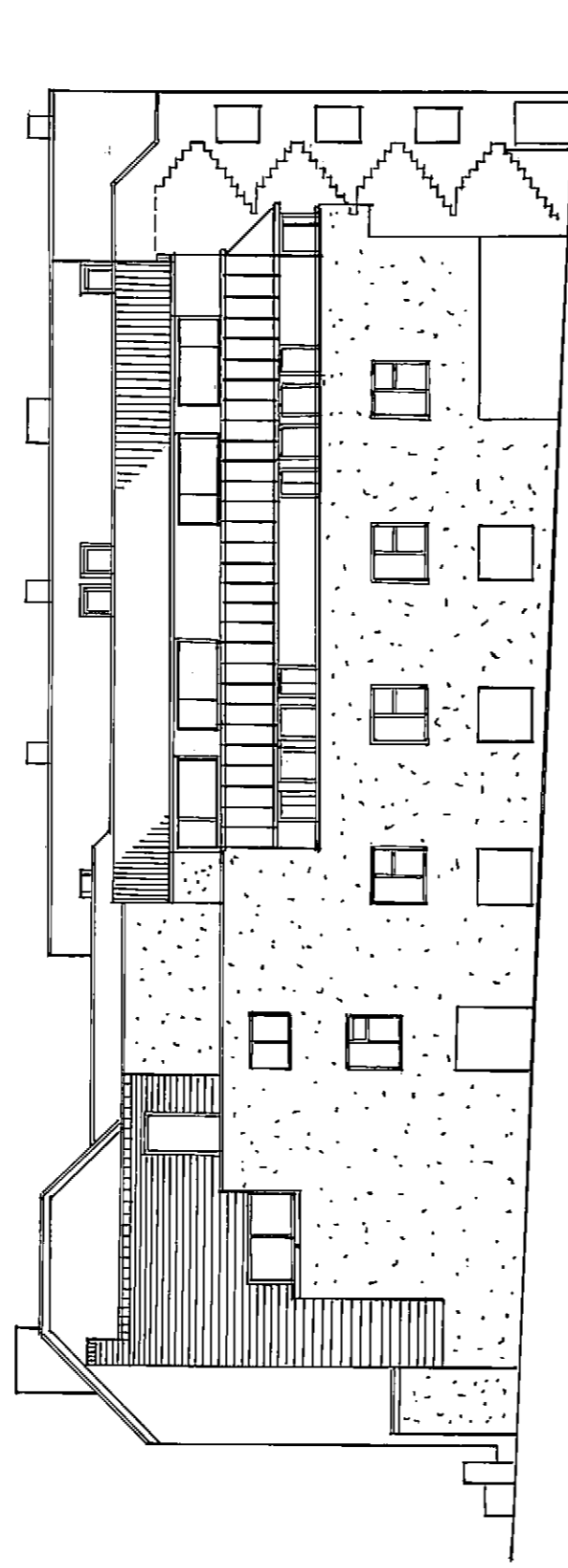
W15-5013

SHEET 3 OF 12 SHEETS

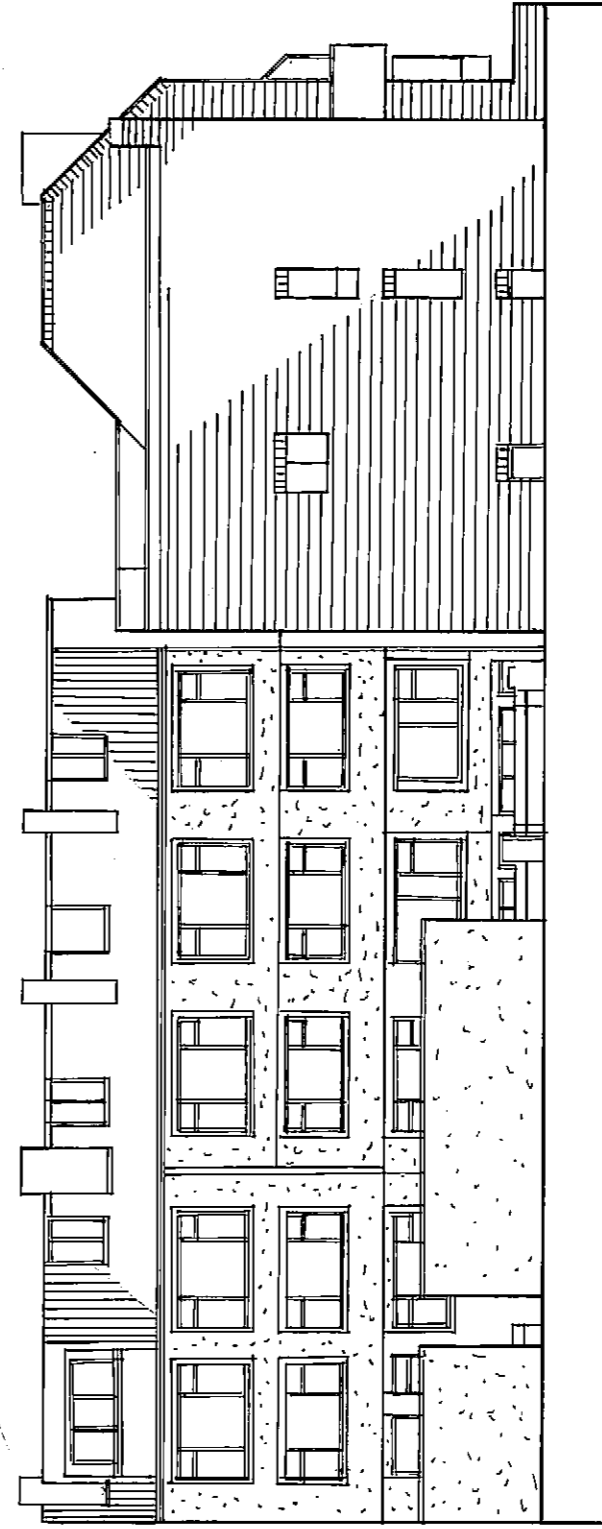
STRATA PLAN VR 992

ELEVATIONS

NORTH ELEVATION  
LOOKING SOUTH



SOUTH ELEVATION  
LOOKING NORTH



FILE 33077-0

AUGUST 4, 1981

*DS*

RCVL 2138 . W

SHEET 4 OF 12 SHEETS

# STRATA PLAN VR 992

## SECTIONS

SCALE 1:200

FIFTH FLOOR		⊙	PT. S.L. 14	PT. S.L. 15	PT. S.L. 16	PT. S.L. 17	PT. S.L. 18
FOURTH FLOOR	PT. S.L. 12	⊙	PT. S.L. 14	PT. S.L. 15	PT. S.L. 16	PT. S.L. 17	PT. S.L. 18
THIRD FLOOR	PT. S.L. 12	⊙	PT. S.L. 14	PT. S.L. 15	PT. S.L. 16	PT. S.L. 17	PT. S.L. 18
SECOND FLOOR	PT. S.L. 3	⊙	PT. S.L. 5	PT. S.L. 6	PT. S.L. 7	PT. S.L. 8	PT. S.L. 9
GROUND FLOOR	PT. S.L. 3	⊙	PT. S.L. 5	PT. S.L. 6	PT. S.L. 7	PT. S.L. 8	PT. S.L. 9
BASEMENT LEVEL	L. C. P. S. L. 7		⊙	L. C. P. S.L. 16	L. C. P. S.L. 17	⊙	L. C. P. S.L. 18

## SECTION B - B'

FIFTH FLOOR		⊙	PT. S.L. 10	PT. S.L. 11	PT. S.L. 12	PT. S.L. 13
FOURTH FLOOR			PT. S.L. 10	PT. S.L. 11	PT. S.L. 12	PT. S.L. 13
THIRD FLOOR			PT. S.L. 1	PT. S.L. 2	PT. S.L. 3	PT. S.L. 4
SECOND FLOOR			PT. S.L. 1	PT. S.L. 2	PT. S.L. 3	PT. S.L. 4
GROUND FLOOR			PT. S.L. 1	PT. S.L. 2	PT. S.L. 3	PT. S.L. 4
BASEMENT LEVEL	L. C. P. S.L. 10		⊙			

## SECTION A - A'

FILE 33077-0

AUGUST 4, 1981

97

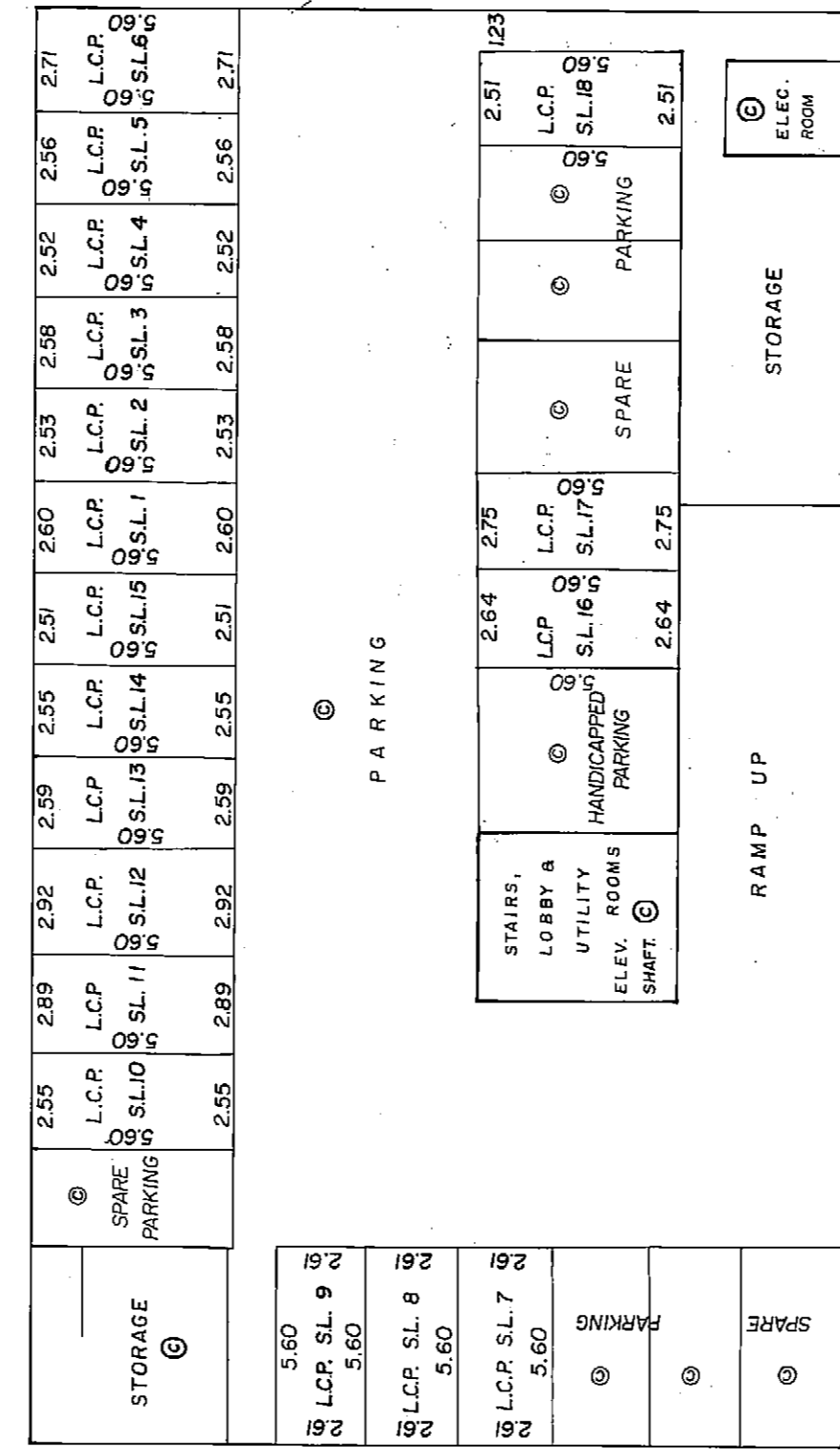
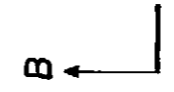
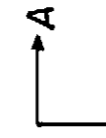
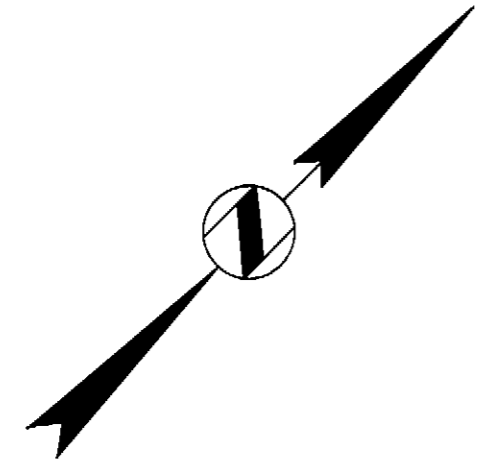
BC1L 7213B - M

SHEET 5 OF 12 SHEETS

# STRATA PLAN VR 992

## PARKING LEVEL

SCALE 1:200



NOTE: PARKING STALLS CREATED BY PAINTED LINES

FILE 33077-0

AUGUST 4, 1981

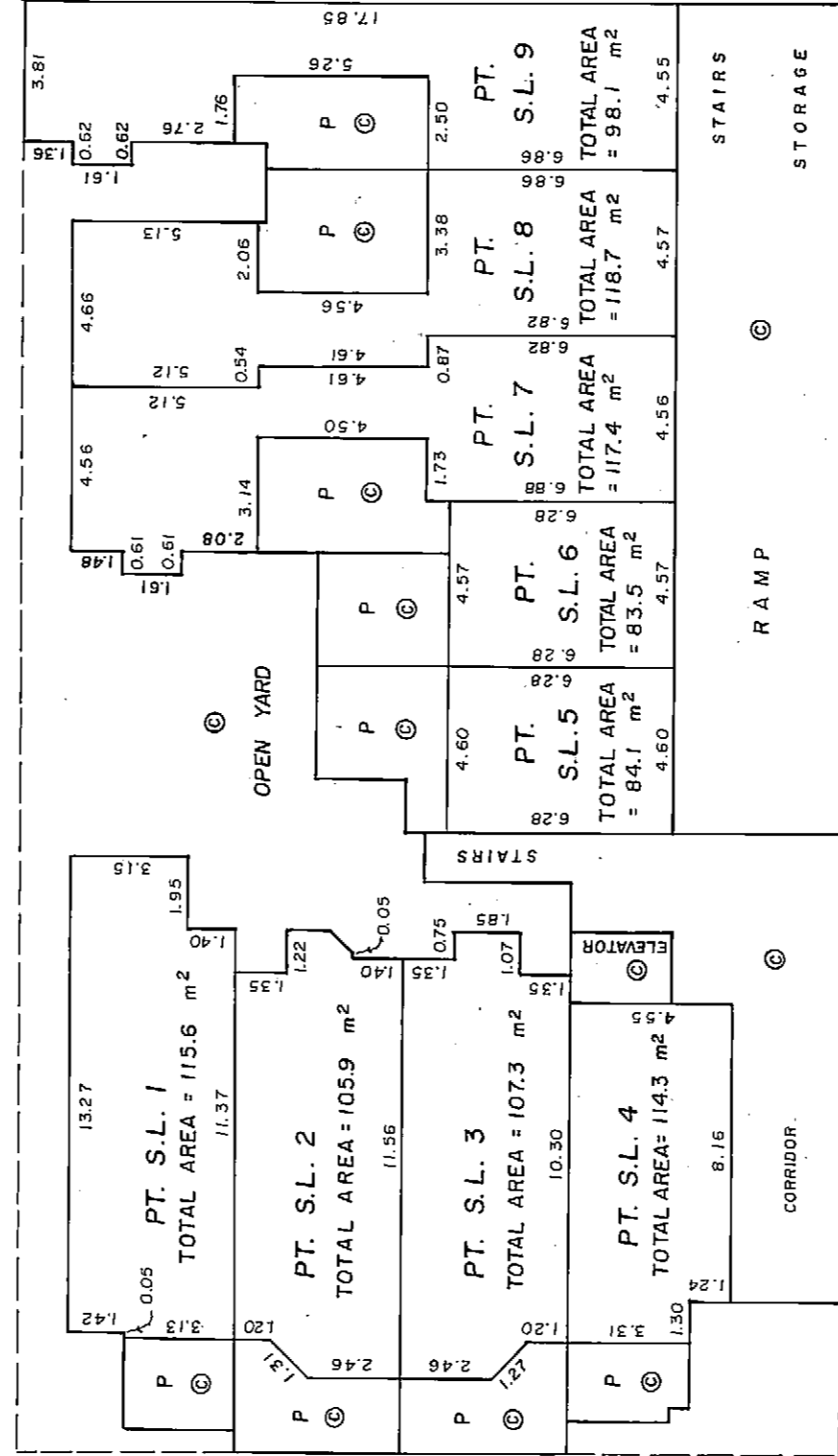
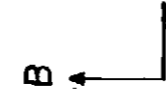
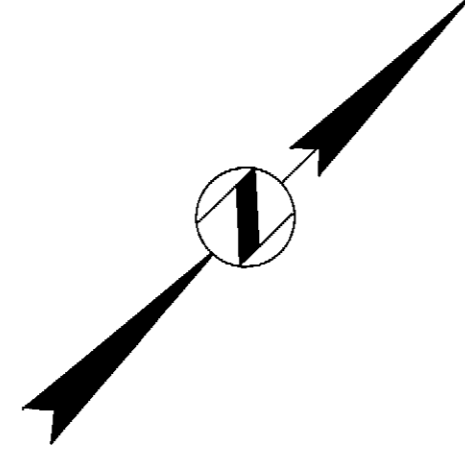
*DF*

BC11 7313B - M

STRATA PLAN VR 992

LEVEL 1

SCALE 1:200



AUGUST 4, 1981

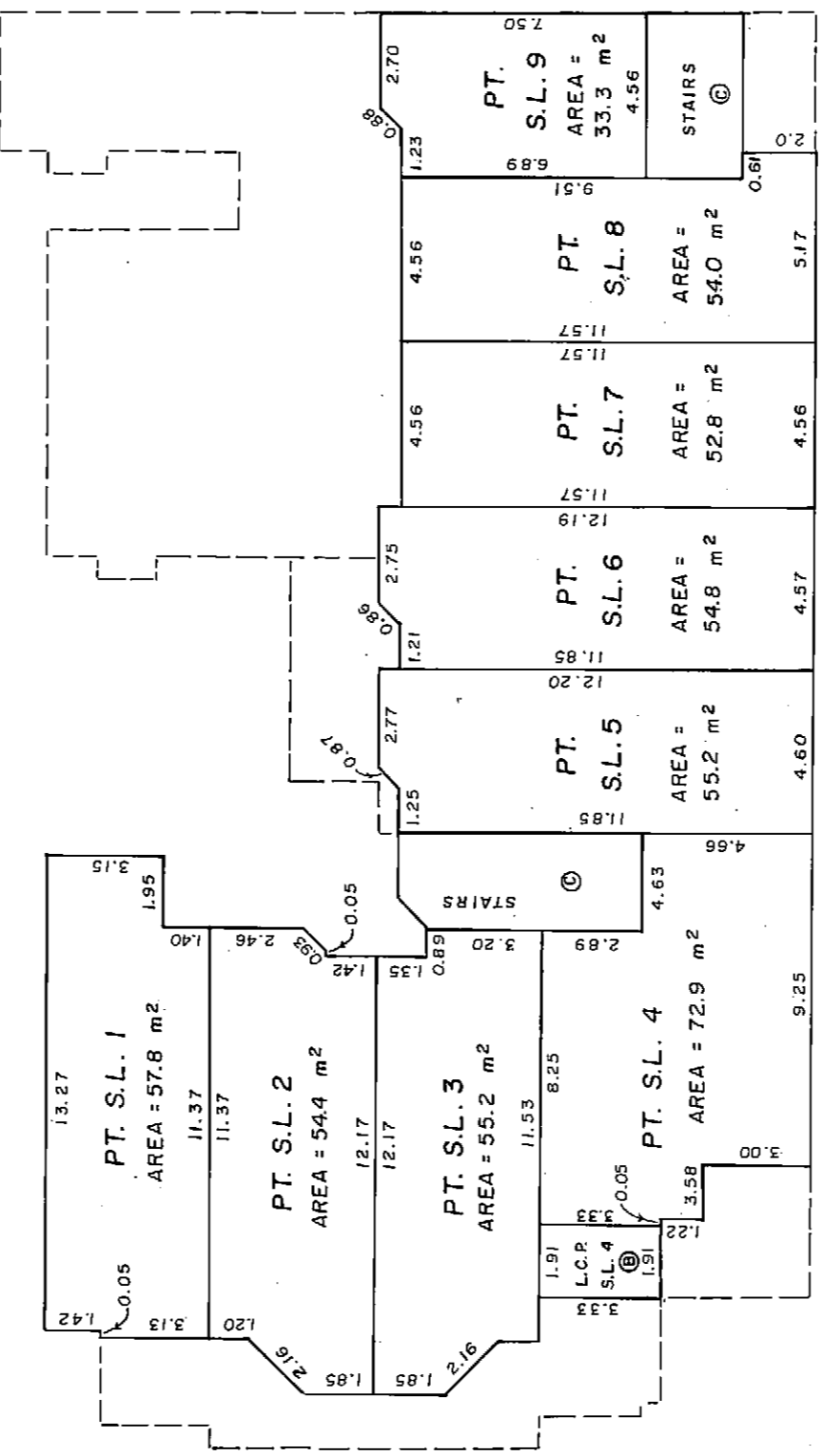
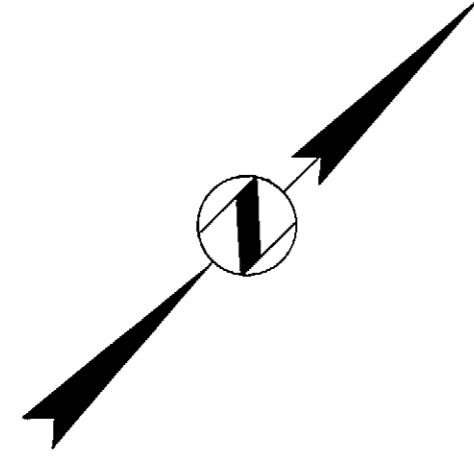
FILE 33077-0

SHEET 7 OF 12 SHEETS

# STRATA PLAN VR 992

## LEVEL 2

SCALE 1:200



FILE 33077-0

AUGUST 4, 1981

25

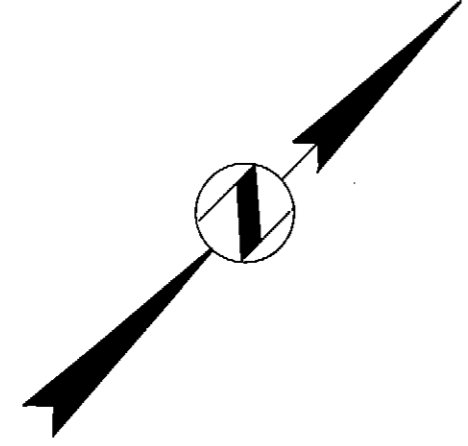
RCIL 7313B - M

SHEET 8 OF 12 SHEETS

# STRATA PLAN VR 992

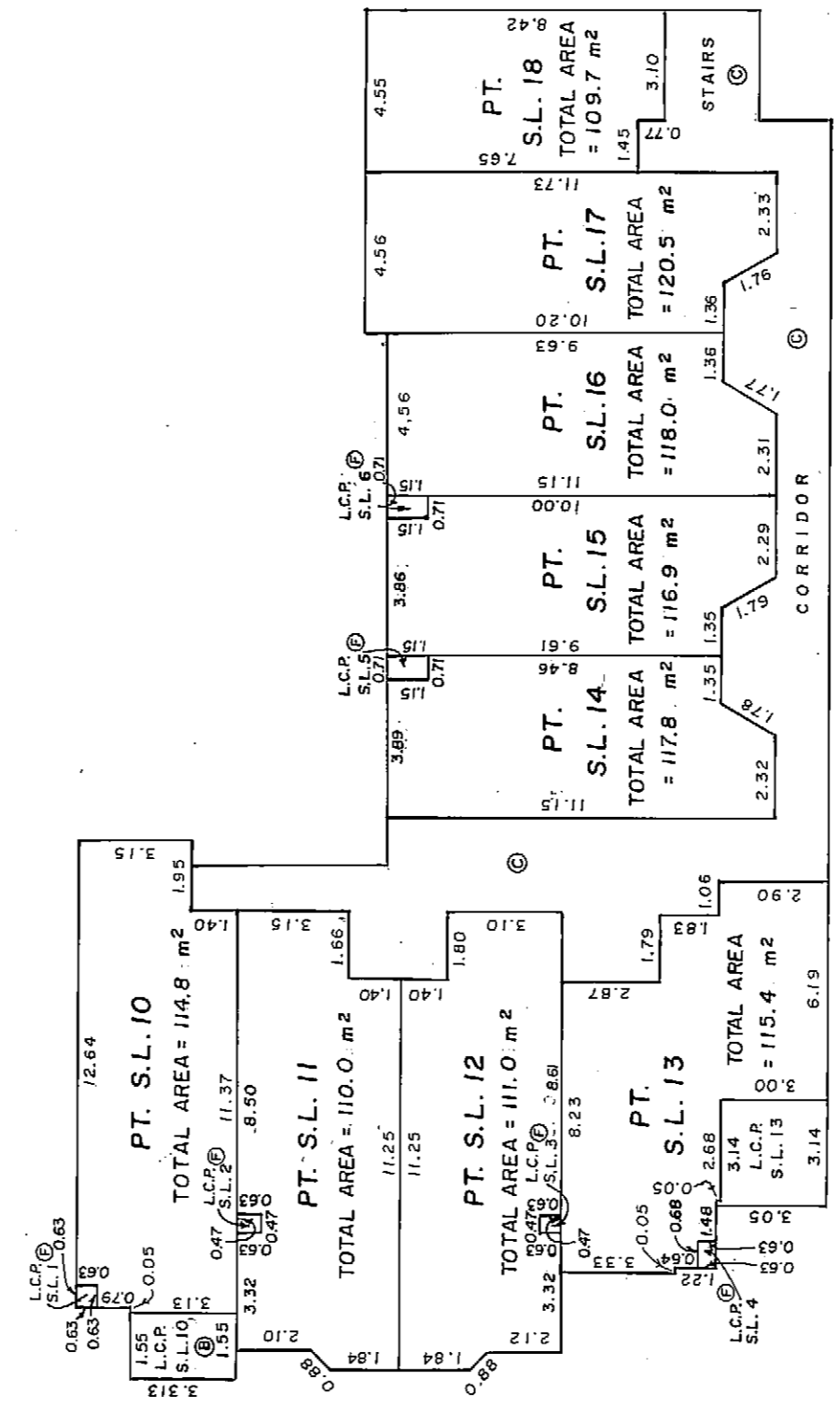
## LEVEL 3

SCALE 1:200



A

B



A'

AUGUST 4, 1981

FILE 33077-0

BCIL 7313B - W

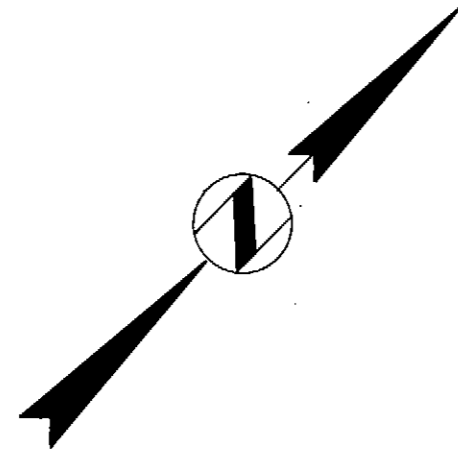


SHEET 9 OF 12 SHEETS

# STRATA PLAN VR 992

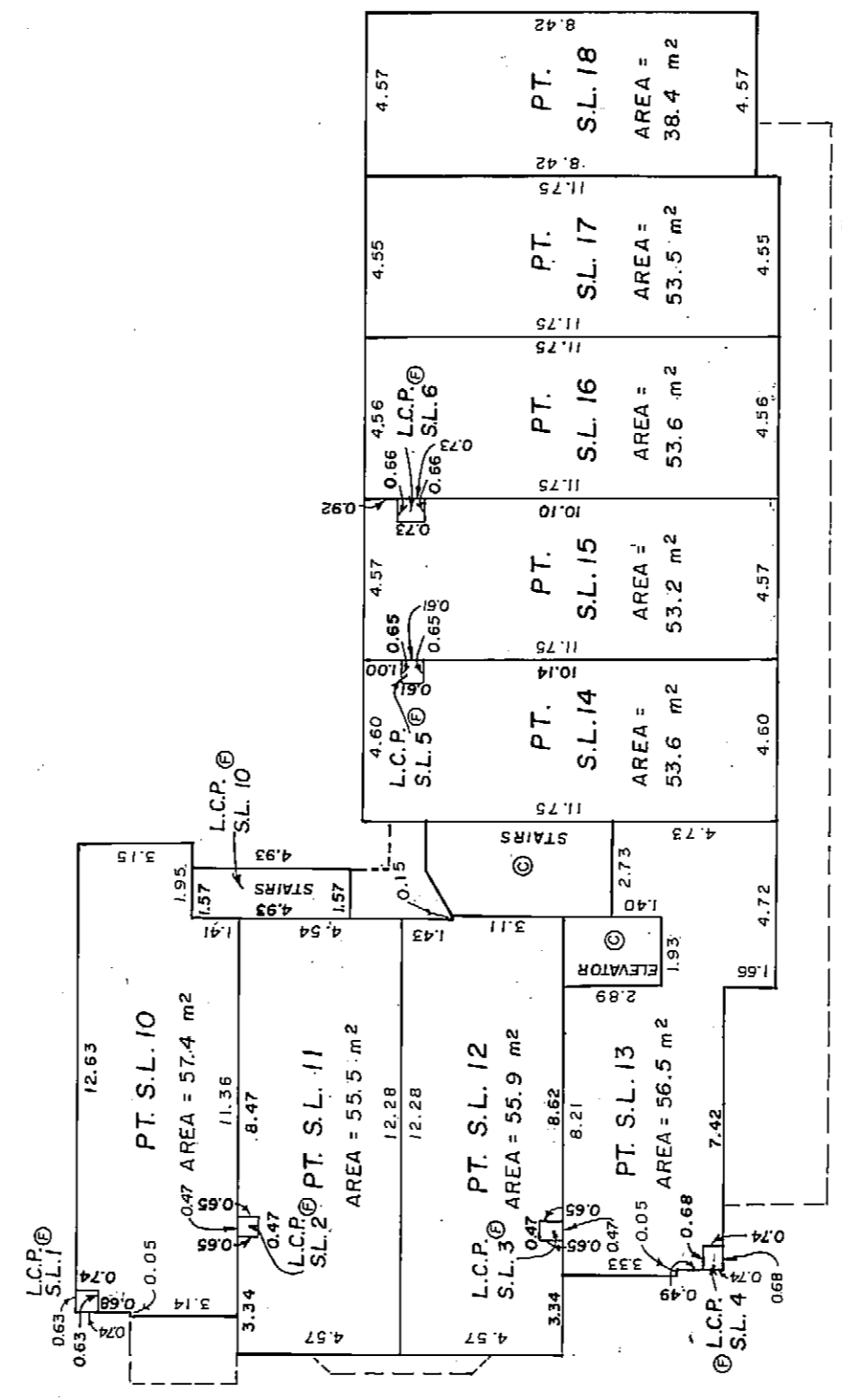
## LEVEL 4

SCALE 1:200



A

B



A'

FILE 33077-0

AUGUST 4, 1981

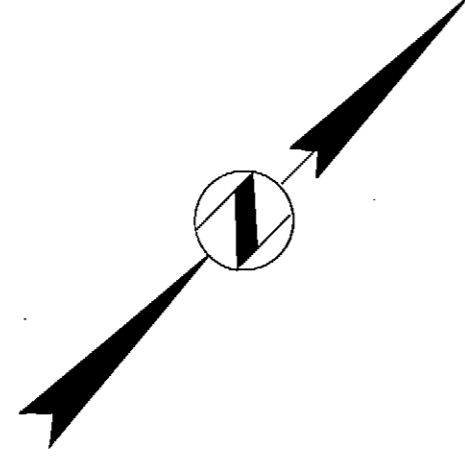
BCIL 7313B.M

SHEET 10 OF 12 SHEETS

# STRATA PLAN VR 992

## LEVEL 5

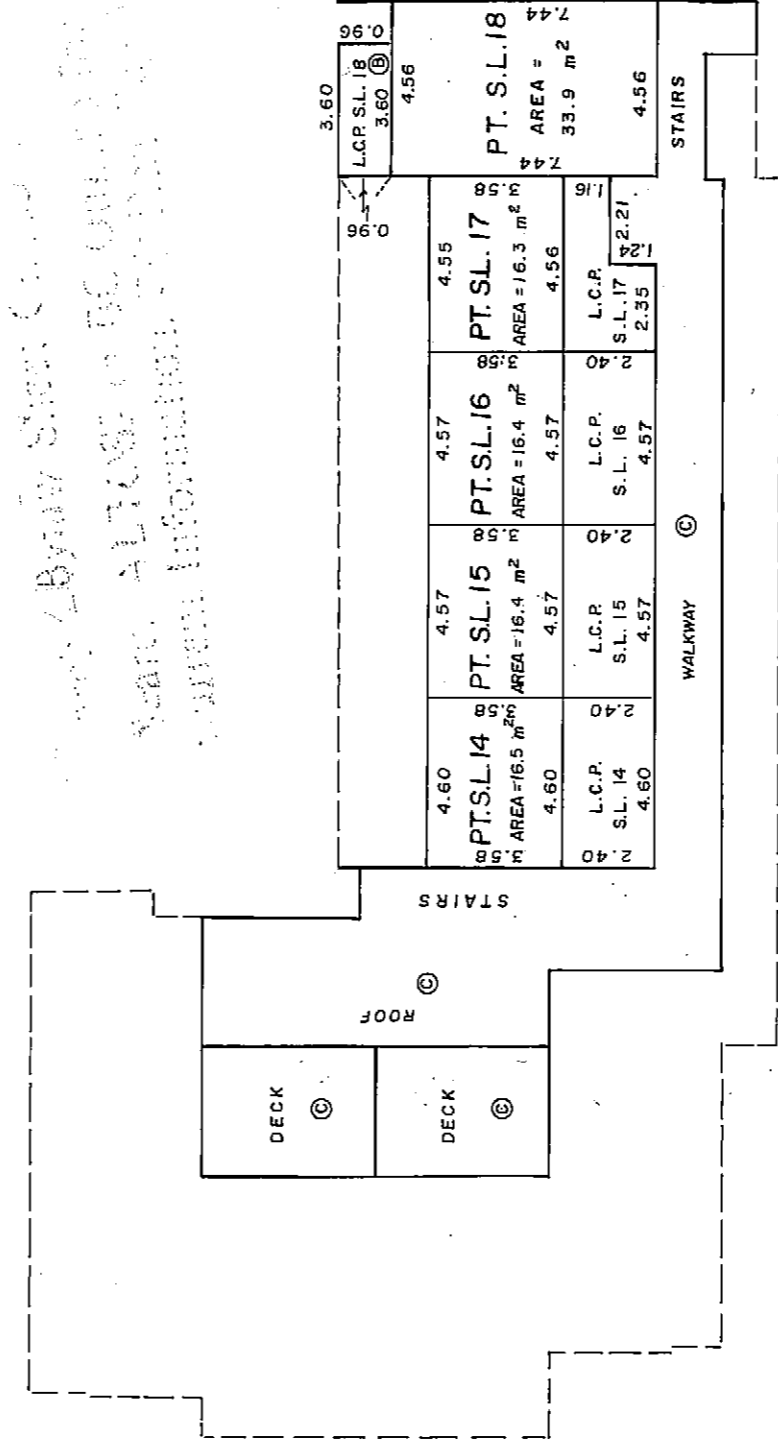
SCALE 1:200



A

B

*Bylaw Street Council  
 AGING ALIASES TO BC UNIT 100  
 Current Information*



A'

FILE 33077-0

AUGUST 4, 1981

*DS*

BCL 7313B - W



