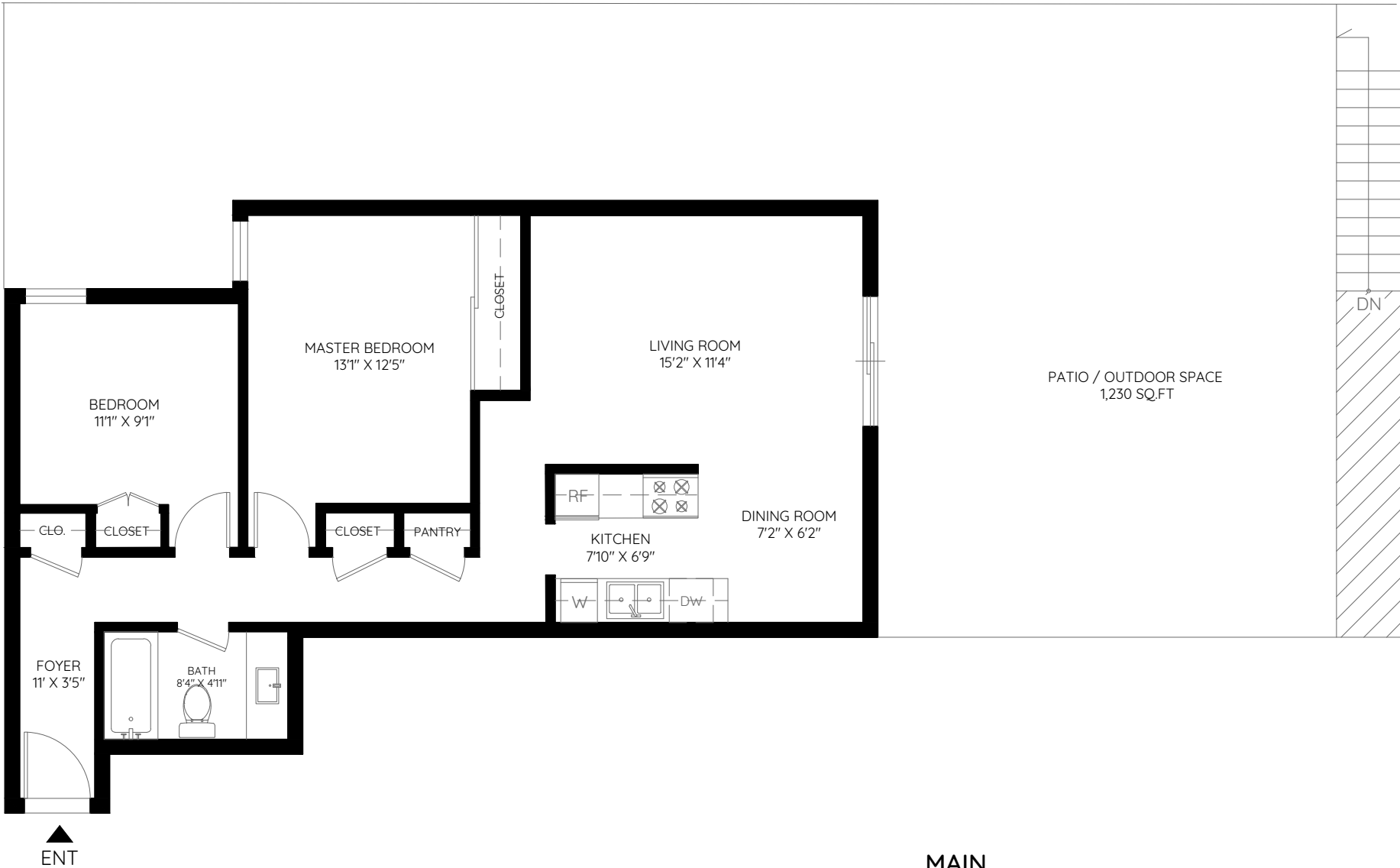


UNIT 104 530 NINTH STREET
NEW WESTMINSTER, BC

MAIN	808 SQ.FT.
TOTAL	808 SQ.FT.
PATIO	1,230 SQ.FT.



MAIN
808 SQ.FT.
CEILING HEIGHT: 8'

The floor plan and the measurements are approximate and are to be used for advertising usage only. Not suitable for architectural or construction.