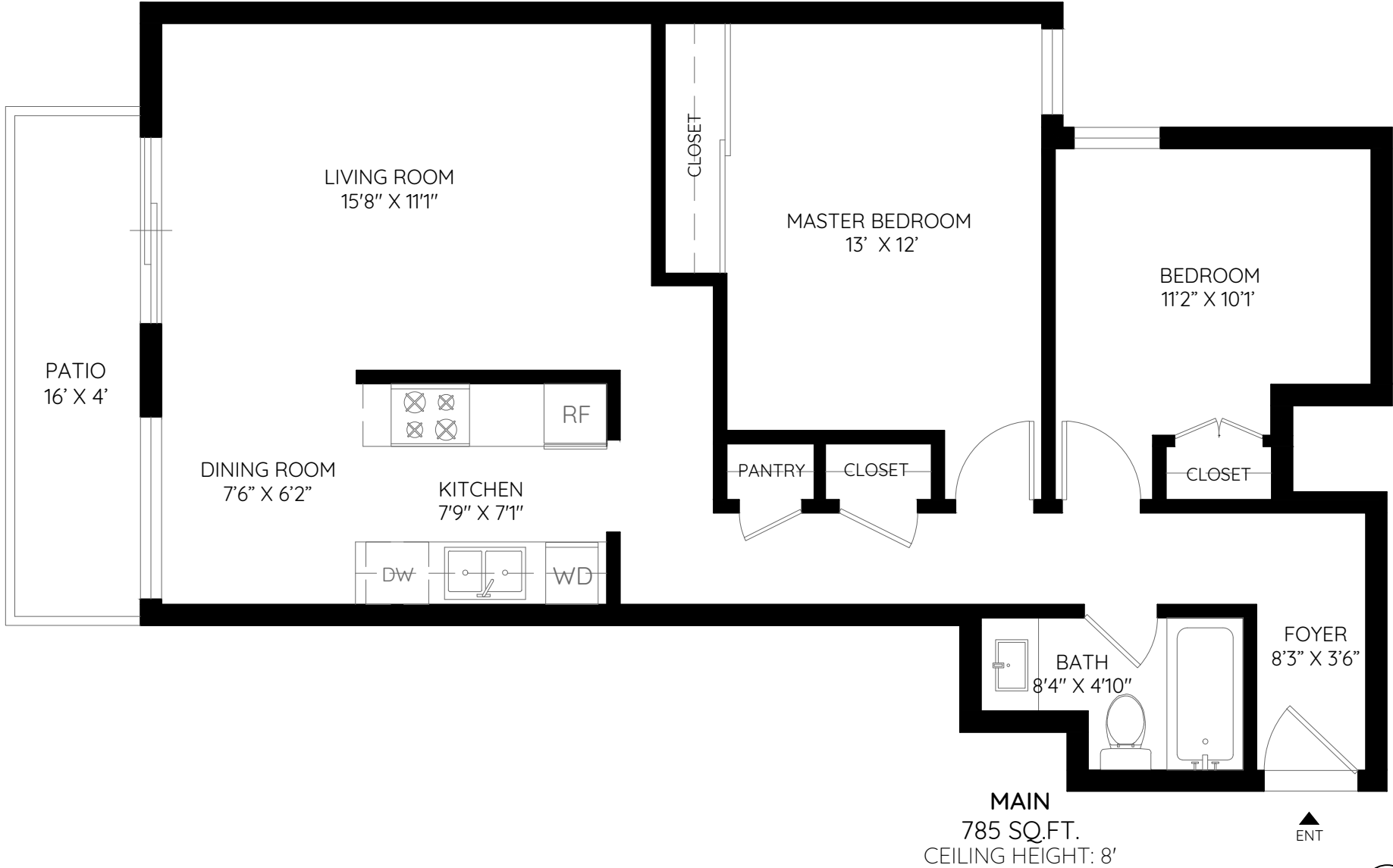


UNIT 202 530 NINTH STREET
NEW WESTMINSTER, BC

| | |
|-------|------------|
| MAIN | 785 SQ.FT. |
| TOTAL | 785 SQ.FT. |
| PATIO | 64SQ.FT. |



The floor plan and the measurements are approximate and are to be used for advertising usage only. Not suitable for architectural or construction.

