

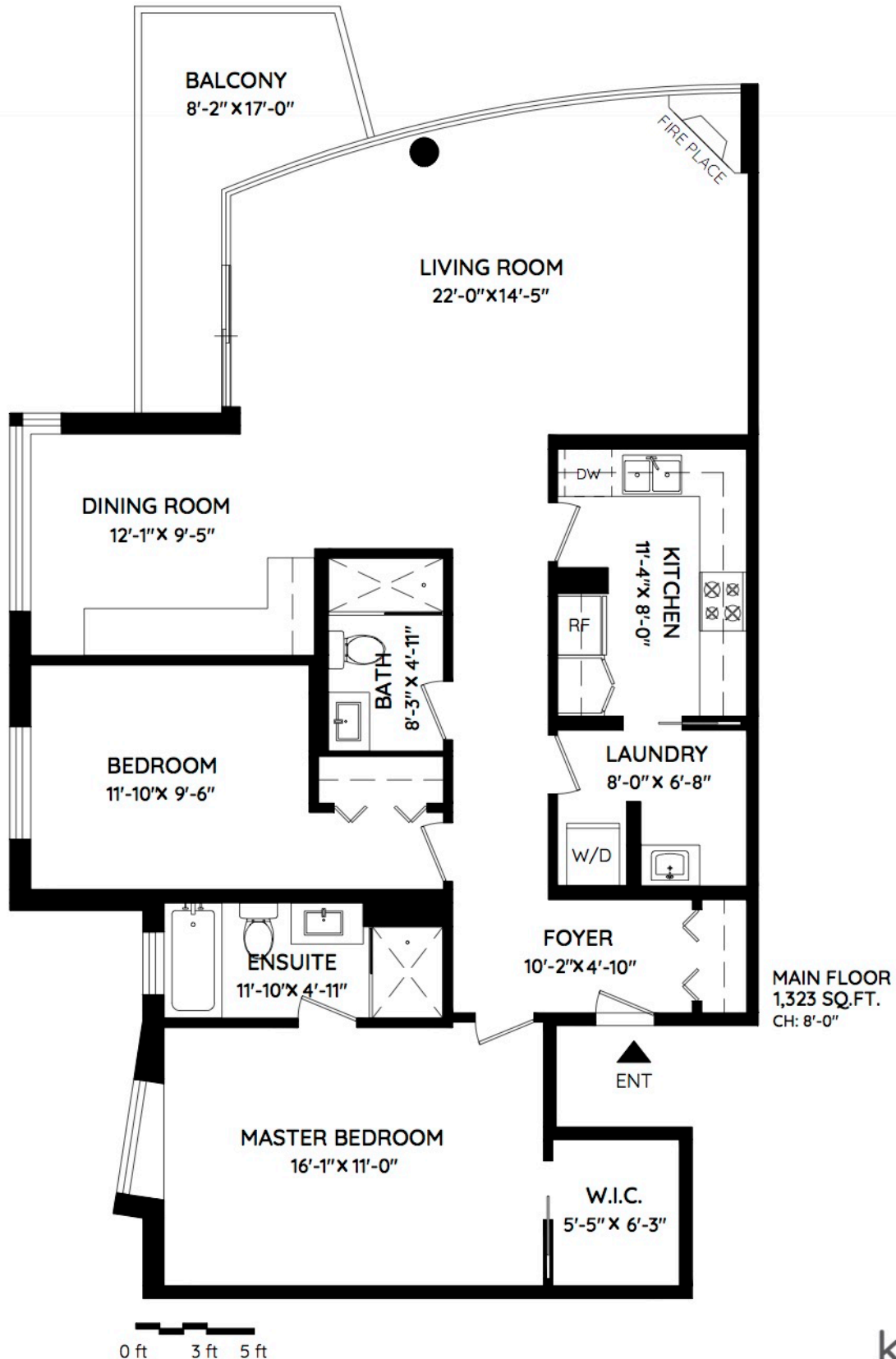
601 - 1485 W 6TH AVENUE

VANCOUVER, BC

TOTAL AREA 1,323 SQ.FT.

BALCONY 103 SQ.FT.

CEILING HEIGHT 8'-0"



The floor plan and the measurements are approximate and are to be used for advertising usage only. Not suitable for architectural or construction E&OE. © 2019 KEYPLAN Measuring Inc.