

SCALE

DATE: 08/01/2008
BY: [Signature]
PROJECT: [Project Name]
SHEET: [Sheet Number]

MAINTENANCE LEGEND

- 1. MAINTENANCE LEGEND
- 2. MAINTENANCE LEGEND
- 3. MAINTENANCE LEGEND
- 4. MAINTENANCE LEGEND
- 5. MAINTENANCE LEGEND
- 6. MAINTENANCE LEGEND
- 7. MAINTENANCE LEGEND
- 8. MAINTENANCE LEGEND
- 9. MAINTENANCE LEGEND
- 10. MAINTENANCE LEGEND
- 11. MAINTENANCE LEGEND
- 12. MAINTENANCE LEGEND
- 13. MAINTENANCE LEGEND
- 14. MAINTENANCE LEGEND
- 15. MAINTENANCE LEGEND
- 16. MAINTENANCE LEGEND
- 17. MAINTENANCE LEGEND
- 18. MAINTENANCE LEGEND
- 19. MAINTENANCE LEGEND
- 20. MAINTENANCE LEGEND
- 21. MAINTENANCE LEGEND
- 22. MAINTENANCE LEGEND
- 23. MAINTENANCE LEGEND
- 24. MAINTENANCE LEGEND
- 25. MAINTENANCE LEGEND
- 26. MAINTENANCE LEGEND
- 27. MAINTENANCE LEGEND
- 28. MAINTENANCE LEGEND
- 29. MAINTENANCE LEGEND
- 30. MAINTENANCE LEGEND
- 31. MAINTENANCE LEGEND
- 32. MAINTENANCE LEGEND
- 33. MAINTENANCE LEGEND
- 34. MAINTENANCE LEGEND
- 35. MAINTENANCE LEGEND
- 36. MAINTENANCE LEGEND
- 37. MAINTENANCE LEGEND
- 38. MAINTENANCE LEGEND
- 39. MAINTENANCE LEGEND
- 40. MAINTENANCE LEGEND
- 41. MAINTENANCE LEGEND
- 42. MAINTENANCE LEGEND
- 43. MAINTENANCE LEGEND
- 44. MAINTENANCE LEGEND
- 45. MAINTENANCE LEGEND
- 46. MAINTENANCE LEGEND
- 47. MAINTENANCE LEGEND
- 48. MAINTENANCE LEGEND
- 49. MAINTENANCE LEGEND
- 50. MAINTENANCE LEGEND
- 51. MAINTENANCE LEGEND
- 52. MAINTENANCE LEGEND
- 53. MAINTENANCE LEGEND
- 54. MAINTENANCE LEGEND
- 55. MAINTENANCE LEGEND
- 56. MAINTENANCE LEGEND
- 57. MAINTENANCE LEGEND
- 58. MAINTENANCE LEGEND
- 59. MAINTENANCE LEGEND
- 60. MAINTENANCE LEGEND
- 61. MAINTENANCE LEGEND
- 62. MAINTENANCE LEGEND
- 63. MAINTENANCE LEGEND
- 64. MAINTENANCE LEGEND
- 65. MAINTENANCE LEGEND
- 66. MAINTENANCE LEGEND
- 67. MAINTENANCE LEGEND
- 68. MAINTENANCE LEGEND
- 69. MAINTENANCE LEGEND
- 70. MAINTENANCE LEGEND
- 71. MAINTENANCE LEGEND
- 72. MAINTENANCE LEGEND
- 73. MAINTENANCE LEGEND
- 74. MAINTENANCE LEGEND
- 75. MAINTENANCE LEGEND
- 76. MAINTENANCE LEGEND
- 77. MAINTENANCE LEGEND
- 78. MAINTENANCE LEGEND
- 79. MAINTENANCE LEGEND
- 80. MAINTENANCE LEGEND
- 81. MAINTENANCE LEGEND
- 82. MAINTENANCE LEGEND
- 83. MAINTENANCE LEGEND
- 84. MAINTENANCE LEGEND
- 85. MAINTENANCE LEGEND
- 86. MAINTENANCE LEGEND
- 87. MAINTENANCE LEGEND
- 88. MAINTENANCE LEGEND
- 89. MAINTENANCE LEGEND
- 90. MAINTENANCE LEGEND
- 91. MAINTENANCE LEGEND
- 92. MAINTENANCE LEGEND
- 93. MAINTENANCE LEGEND
- 94. MAINTENANCE LEGEND
- 95. MAINTENANCE LEGEND
- 96. MAINTENANCE LEGEND
- 97. MAINTENANCE LEGEND
- 98. MAINTENANCE LEGEND
- 99. MAINTENANCE LEGEND
- 100. MAINTENANCE LEGEND

NOTES

- 1. NOTES
- 2. NOTES
- 3. NOTES
- 4. NOTES
- 5. NOTES
- 6. NOTES
- 7. NOTES
- 8. NOTES
- 9. NOTES
- 10. NOTES
- 11. NOTES
- 12. NOTES
- 13. NOTES
- 14. NOTES
- 15. NOTES
- 16. NOTES
- 17. NOTES
- 18. NOTES
- 19. NOTES
- 20. NOTES
- 21. NOTES
- 22. NOTES
- 23. NOTES
- 24. NOTES
- 25. NOTES
- 26. NOTES
- 27. NOTES
- 28. NOTES
- 29. NOTES
- 30. NOTES
- 31. NOTES
- 32. NOTES
- 33. NOTES
- 34. NOTES
- 35. NOTES
- 36. NOTES
- 37. NOTES
- 38. NOTES
- 39. NOTES
- 40. NOTES
- 41. NOTES
- 42. NOTES
- 43. NOTES
- 44. NOTES
- 45. NOTES
- 46. NOTES
- 47. NOTES
- 48. NOTES
- 49. NOTES
- 50. NOTES
- 51. NOTES
- 52. NOTES
- 53. NOTES
- 54. NOTES
- 55. NOTES
- 56. NOTES
- 57. NOTES
- 58. NOTES
- 59. NOTES
- 60. NOTES
- 61. NOTES
- 62. NOTES
- 63. NOTES
- 64. NOTES
- 65. NOTES
- 66. NOTES
- 67. NOTES
- 68. NOTES
- 69. NOTES
- 70. NOTES
- 71. NOTES
- 72. NOTES
- 73. NOTES
- 74. NOTES
- 75. NOTES
- 76. NOTES
- 77. NOTES
- 78. NOTES
- 79. NOTES
- 80. NOTES
- 81. NOTES
- 82. NOTES
- 83. NOTES
- 84. NOTES
- 85. NOTES
- 86. NOTES
- 87. NOTES
- 88. NOTES
- 89. NOTES
- 90. NOTES
- 91. NOTES
- 92. NOTES
- 93. NOTES
- 94. NOTES
- 95. NOTES
- 96. NOTES
- 97. NOTES
- 98. NOTES
- 99. NOTES
- 100. NOTES

REVISIONS

- 1. REVISIONS
- 2. REVISIONS
- 3. REVISIONS
- 4. REVISIONS
- 5. REVISIONS
- 6. REVISIONS
- 7. REVISIONS
- 8. REVISIONS
- 9. REVISIONS
- 10. REVISIONS
- 11. REVISIONS
- 12. REVISIONS
- 13. REVISIONS
- 14. REVISIONS
- 15. REVISIONS
- 16. REVISIONS
- 17. REVISIONS
- 18. REVISIONS
- 19. REVISIONS
- 20. REVISIONS
- 21. REVISIONS
- 22. REVISIONS
- 23. REVISIONS
- 24. REVISIONS
- 25. REVISIONS
- 26. REVISIONS
- 27. REVISIONS
- 28. REVISIONS
- 29. REVISIONS
- 30. REVISIONS
- 31. REVISIONS
- 32. REVISIONS
- 33. REVISIONS
- 34. REVISIONS
- 35. REVISIONS
- 36. REVISIONS
- 37. REVISIONS
- 38. REVISIONS
- 39. REVISIONS
- 40. REVISIONS
- 41. REVISIONS
- 42. REVISIONS
- 43. REVISIONS
- 44. REVISIONS
- 45. REVISIONS
- 46. REVISIONS
- 47. REVISIONS
- 48. REVISIONS
- 49. REVISIONS
- 50. REVISIONS
- 51. REVISIONS
- 52. REVISIONS
- 53. REVISIONS
- 54. REVISIONS
- 55. REVISIONS
- 56. REVISIONS
- 57. REVISIONS
- 58. REVISIONS
- 59. REVISIONS
- 60. REVISIONS
- 61. REVISIONS
- 62. REVISIONS
- 63. REVISIONS
- 64. REVISIONS
- 65. REVISIONS
- 66. REVISIONS
- 67. REVISIONS
- 68. REVISIONS
- 69. REVISIONS
- 70. REVISIONS
- 71. REVISIONS
- 72. REVISIONS
- 73. REVISIONS
- 74. REVISIONS
- 75. REVISIONS
- 76. REVISIONS
- 77. REVISIONS
- 78. REVISIONS
- 79. REVISIONS
- 80. REVISIONS
- 81. REVISIONS
- 82. REVISIONS
- 83. REVISIONS
- 84. REVISIONS
- 85. REVISIONS
- 86. REVISIONS
- 87. REVISIONS
- 88. REVISIONS
- 89. REVISIONS
- 90. REVISIONS
- 91. REVISIONS
- 92. REVISIONS
- 93. REVISIONS
- 94. REVISIONS
- 95. REVISIONS
- 96. REVISIONS
- 97. REVISIONS
- 98. REVISIONS
- 99. REVISIONS
- 100. REVISIONS

PROJECT INFORMATION

PROJECT: [Project Name]
LOCATION: [Location]
OWNER: [Owner]
ARCHITECT: [Architect]
DATE: [Date]

ELEVATION KEY

1. ELEVATION KEY

PROJECT INFORMATION

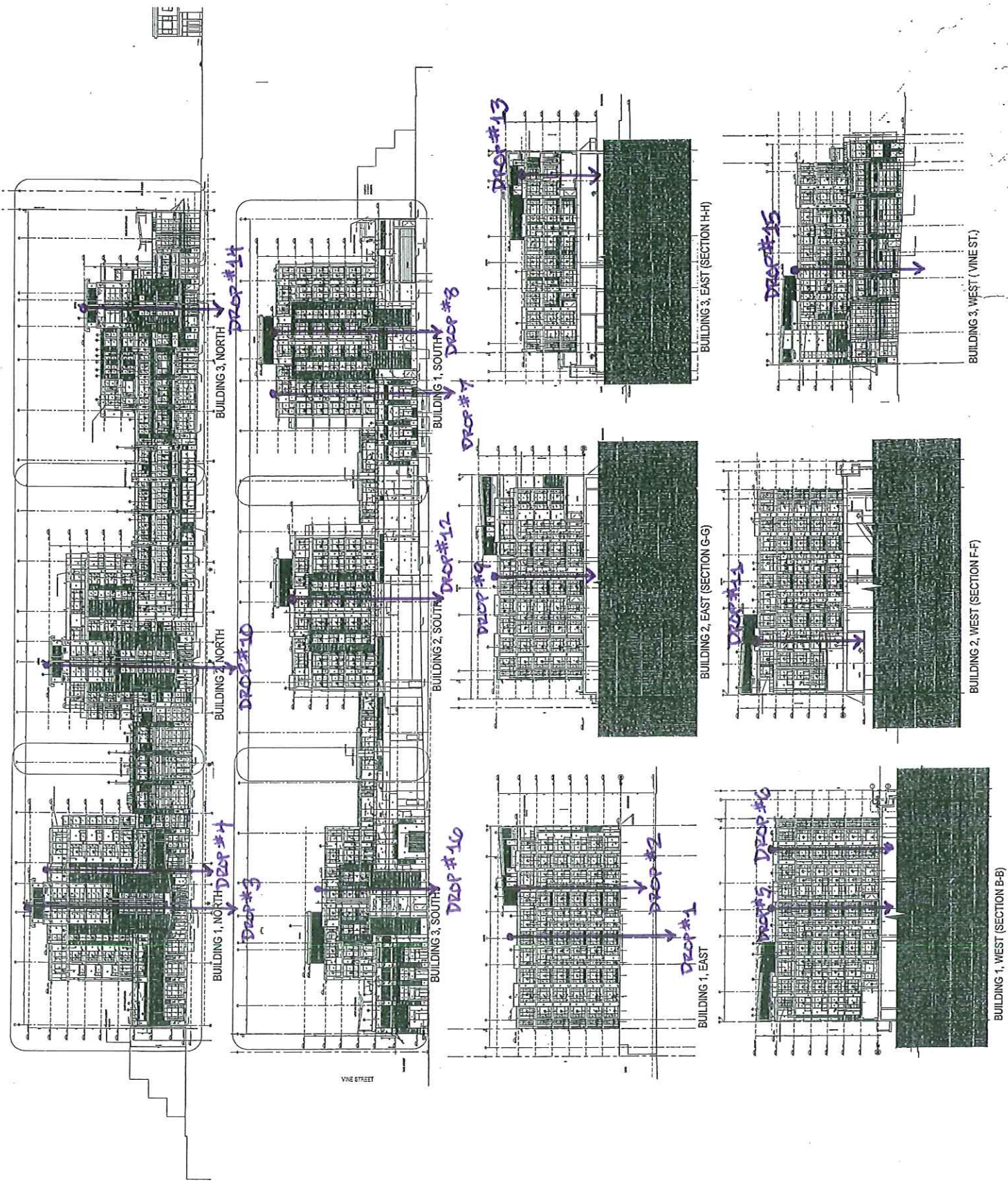
PROJECT: [Project Name]
LOCATION: [Location]
OWNER: [Owner]
ARCHITECT: [Architect]
DATE: [Date]

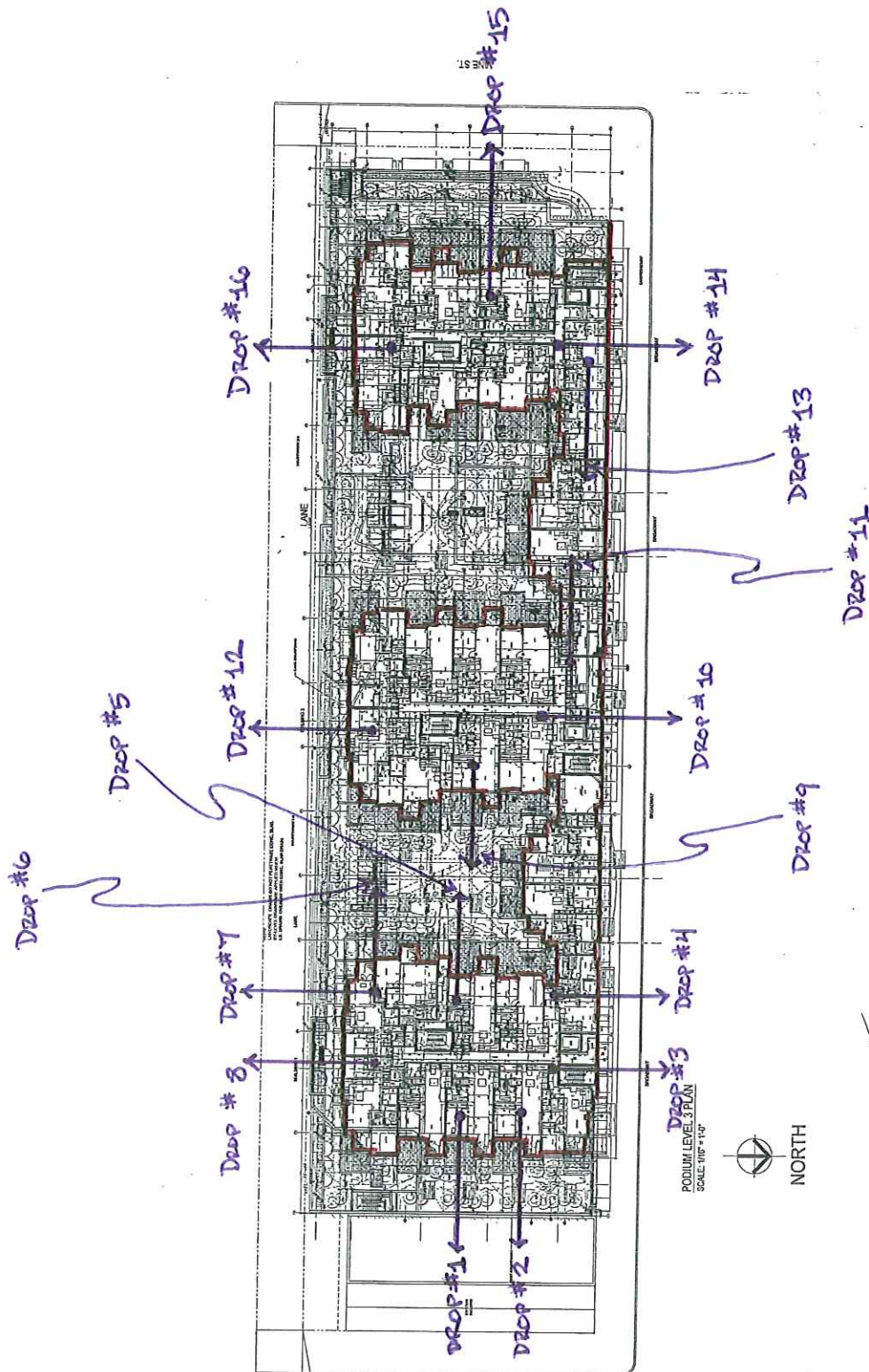
ELEVATION KEY

1. ELEVATION KEY

PROJECT INFORMATION

PROJECT: [Project Name]
LOCATION: [Location]
OWNER: [Owner]
ARCHITECT: [Architect]
DATE: [Date]





GLOSSARY OF TERMS - Continued

- **Through-wall flashing** – installed in a rain-screen wall system typically at each floor level. This flashing is intended to shed water from the moisture barrier plane of the cavity to the exterior face of the wall in addition to providing weather protection at the top of each cavity.

Maintenance – refers to a regular process of inspection, repair and renewal of aging and deteriorating materials, products and building systems.

Membrane – typically refers to a continuous waterproof material used to prevent water penetration.

Movement Joint refers to a joint in the building envelope that allows differential movement of portions of the building structure (expansion Joint), or prevents or localizes cracking of brittle materials, such as stucco, where movement needs to be controlled (control joint).

Penetration refers to a hole passing through the building envelope in which ducts, electrical wires, pipes and fasteners are run between inside and outside.

Rain-Screen – See Drained Cavity.

Saddle refers to the transition of small horizontal surfaces, such as the top of a balcony guard rail or parapet wall with a vertical surface, such as a wall.

Scupper – refers to a horizontal drain, which generally passes through a wall. They are typically made up of a piece of pipe or a metal trough.

Sheathing – refers to a sheet material such as plywood, which is used to cover the framing assemblies of a roof or wall system. The sheathing provides structural stiffness in addition to providing backing for the cladding or roofing.

Sheathing Paper refers to a material or combination of materials in an exterior wall whose purpose is to retard penetration of incidental water further into the wall structure once past the cladding. Commonly used materials are building paper and house wrap.

Substrate – refers to an underlying material, supported by studs, which is often relied on for adhesion of the covering material.

UV – refers to ultra-violet radiation (from the sun), which has a degenerative affect on many building materials.

Built-up Roof – refers to a waterproof system constructed of multiple felt layers mopped down with hot bitumen.