

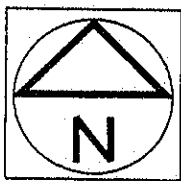
PHASED STRATA PLAN OF LOT A,  
EXCEPT FIRSTLY PHASE ONE STRATA  
PLAN LMS851, DISTRICT LOT 153,  
GROUP 1, NEW WESTMINSTER DISTRICT,  
PLAN LMP2445

STRATA PLAN LMS851

PHASE 2

SCALE - 1:1000

0 10 20 40 60  
ALL DISTANCES IN METRES



INTEGRATED SURVEY AREA NO.25

CITY OF BURNABY

B.C.G.S. 92G 025

CITY OF BURNABY  
CIVIC ADDRESS

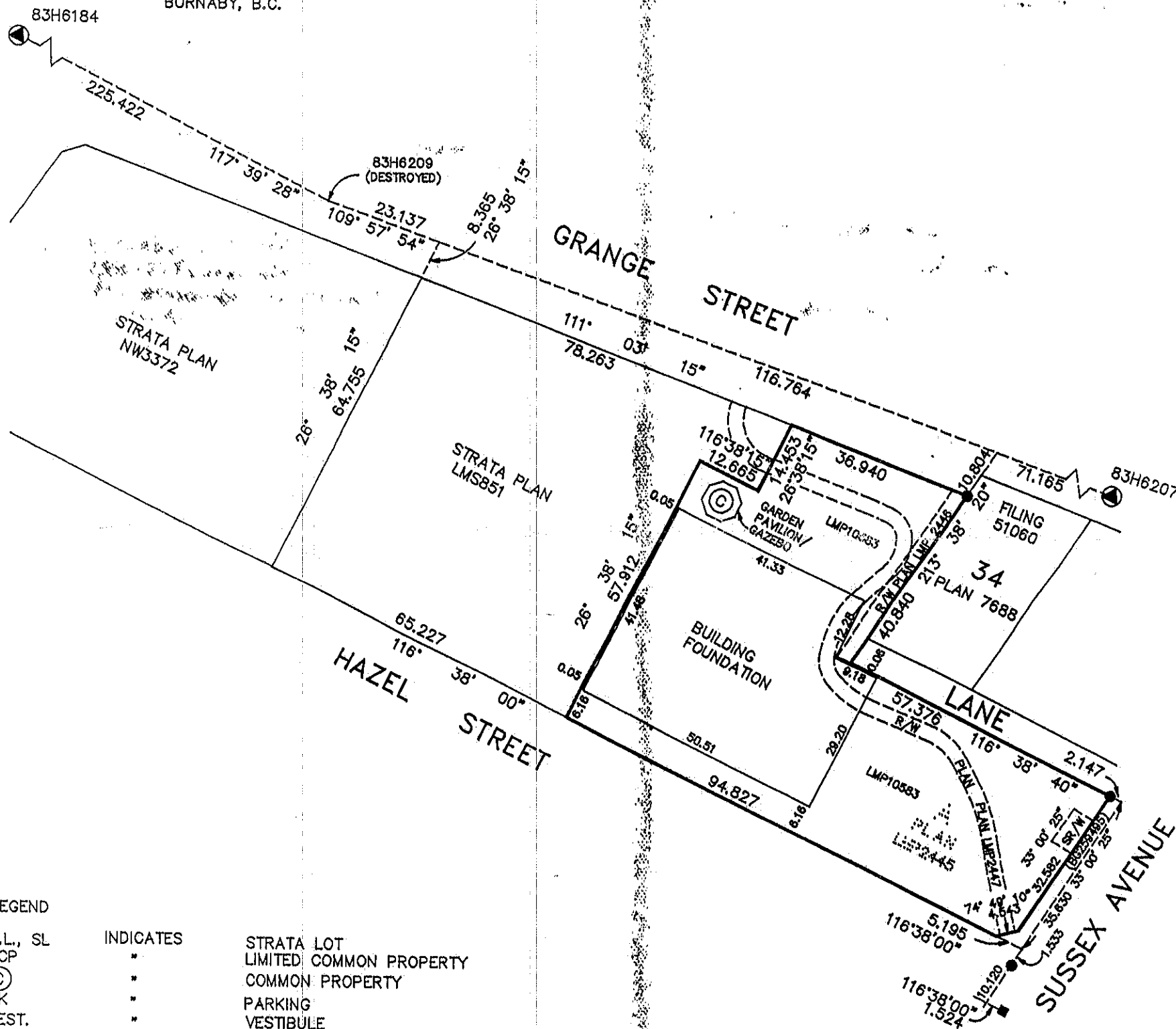
4657 HAZEL STREET  
BURNABY, B.C.

DEPOSITED AND REGISTERED IN THE LAND TITLE  
OFFICE AT NEW WESTMINSTER, B.C.

THIS \_\_\_\_\_ DAY OF \_\_\_\_\_, 1994

ASSISTANT DEPUTY REGISTRAR

THIS PLAN LIES WITHIN THE  
GREATER VANCOUVER  
REGIONAL DISTRICT



LEGEND

S.L., SL	INDICATES	STRATA LOT
LCP	"	LIMITED COMMON PROPERTY
©	"	COMMON PROPERTY
PK	"	PARKING
VEST.	"	VESTIBULE
WR	"	WASHROOM
ST	"	STORAGE
B	"	BALCONY
T	"	TERRACE
S	"	STAIRS
E	"	ELEVATOR
H	"	HALL
V	"	VENT
L	"	LOBBY
●	"	OLD IRON POST FOUND
■	"	OLD LEAD PLUG FOUND
▲	"	OLD CONTROL MONUMENT FOUND

BEARINGS ARE GRID BEARINGS AND ARE  
DERIVED FROM OLD CONTROL MONUMENTS  
83H6207 AND 83H6184

THIS PLAN SHOWS GROUND LEVEL MEASURED DISTANCES.  
PRIOR TO COMPUTATION OF UTM COORDINATES, MULTIPLY  
BY THE COMBINED FACTOR 0.9995859019.

THE ADDRESS FOR SERVICE OF DOCUMENTS ON  
THE STRATA CORPORATION IS: THE OWNER'S  
STRATA PLAN LMS \_\_\_\_\_

McCarthy Tetrault  
1300 - 777 Dunsmuir Street,  
Vancouver, B.C. V7Y 1K2

I, R. J. ESSON, OF THE CITY OF WHITE ROCK  
BRITISH COLUMBIA LAND SURVEYOR, HEREBY  
CERTIFY THAT THE BUILDING ERECTED ON THE  
PARCEL DESCRIBED ABOVE IS WHOLLY WITHIN THE  
EXTERNAL BOUNDARIES OF THAT PARCEL

*R. J. Esson*

B. C. L. S.

DATED AT WHITE ROCK, B.C.  
THIS 29<sup>th</sup> DAY OF Sept., 1994

# STRATA PLAN LMS851 PHASE 2

### NEW DEVELOPMENT CERTIFICATE

I, R. J. ESSON, A BRITISH COLUMBIA LAND SURVEYOR, HEREBY CERTIFY THAT THE BUILDING SHOWN IN THIS STRATA PLAN HAS NOT, AS OF THE 29<sup>th</sup> DAY OF Sept., 1994, BEEN PREVIOUSLY OCCUPIED. DATED AT WHITE ROCK, BRITISH COLUMBIA, THIS 29<sup>th</sup> DAY OF Sept., 1994.

### SIGNATURES

#### STATUTORY DECLARATION

WE THE UNDERSIGNED DO SOLEMNLY DECLARE THAT  
(1) WE THE UNDERSIGNED ARE THE OWNER DEVELOPER  
(2) THE STRATA PLAN IS ENTIRELY FOR RESIDENTIAL USE.  
WE MAKE THIS SOLEMN DECLARATION CONSCIENTIOUSLY BELIEVING IT TO BE TRUE AND KNOWING THAT IT IS OF THE SAME FORCE AND EFFECT AS IF MADE UNDER OATH.

[Signature]  
Guy Young

DECLARED BEFORE ME THIS 7<sup>th</sup> DAY OF October, 1994.

A COMMISSIONER FOR TAKING AFFIDAVITS WITHIN THE PROVINCE OF BRITISH COLUMBIA.

Elizabeth H. Yip  
1300-777 Dunsmuir St.  
Vancouver, B.C. V7Y 1K2

ACCEPTED AS TO FORMS 1,2 AND 3  
THIS 25 DAY OF OCTOBER, 1994.

for: [Signature]  
SUPERINTENDENT OF REAL ESTATE

APPROVED AS TO PHASE 2 OF A 2 PHASE STRATA PLAN  
DATED THIS 13<sup>th</sup> DAY OF OCTOBER 1994

[Signature]  
APPROVING OFFICER FOR THE CITY OF BURNABY

RJ Eason  
B. C. L. S.

OWNER: 403661 BRITISH COLUMBIA LTD.

[Signature]  
AUTHORIZED SIGNATORY Guy Young

AUTHORIZED SIGNATORY

WITNESS : [Signature]

ADDRESS AND OCCUPATION OF WITNESS :  
Elizabeth Yip, lawyer  
1300-777 Dunsmuir St.  
Vancouver, B.C.

MORTGAGEE: ROYAL BANK OF CANADA

[Signature]  
D.J. Pether Account Manager  
AUTHORIZED SIGNATORY  
[Signature]  
B.E. Elchuk Account Manager  
AUTHORIZED SIGNATORY

WITNESS :  
Carazon Guillen  
Carazon Guillen

ADDRESS AND OCCUPATION OF WITNESS :  
1025 West Georgia  
Vancouver, B.C.  
Secretary


[Signature]  
DATED THIS 29<sup>th</sup> DAY OF Sept., 1994. B.C.L.S.

# STRATA PLAN LMS851

## PHASE 2

### CONDOMINIUM ACT

LOT NUMBER	SHEET NUMBER	FORM 1	FORM 2	FORM 3
		SCHEDULE OF UNIT ENTITLEMENT	SCHEDULE OF INTEREST UPON DESTRUCTION	SCHEDULE OF VOTING RIGHTS
		UNIT ENTITLEMENT	INTEREST UPON DESTRUCTION	NUMBER OF VOTES
114	9	870	2059	
115	9	844	1409	
116	10	954	2139	
117	10	651	1389	
118	10	845	1969	
119	10	1233	2459	
120	10	650	1369	
121	10	886	2119	
122	11	954	2159	
123	11	651	1389	
124	11	845	1989	
125	11	1233	2479	
126	11	650	1389	
127	11	886	2139	
128	12	954	2179	
129	12	651	1409	
130	12	845	2009	
131	12	1233	2499	
132	12	650	1409	
133	12	886	2159	
134	13	954	2209	
135	13	651	1429	
136	13	845	2039	
137	13	1233	2529	
138	13	650	1429	
139	13	886	2189	
140	14	954	2239	
141	14	651	1449	
142	14	845	2069	
143	14	1233	2559	
144	14	650	1449	
145	14	886	2219	
146	15	954	2269	
147	15	651	1469	
148	15	845	2099	
149	15	1234	2589	
150	15	650	1469	
151	15	886	2249	
152	16	954	2299	
153	16	651	1489	
154	16	845	2129	
155	16	1231	2619	
156	16	650	1489	
157	16	886	2279	
158	17	954	2329	
159	17	651	1509	
160	17	845	2159	
161	17	1233	2649	
162	17	650	1509	
163	17	886	2309	
164	18	954	2369	
165	18	651	1529	
166	18	845	2199	
167	18	1229	2689	
168	18	650	1529	
169	18	886	2349	
170	19	954	2409	

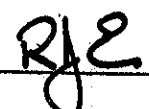
  
 DATED THIS 29<sup>th</sup> DAY OF Sept., 1994. B.C.L.S.

# STRATA PLAN LMS851

## PHASE 2

### CONDOMINIUM ACT

LOT NUMBER	SHEET NUMBER	FORM 1	FORM 2	FORM 3
		SCHEDULE OF UNIT ENTITLEMENT	SCHEDULE OF INTEREST UPON DESTRUCTION	SCHEDULE OF VOTING RIGHTS
		UNIT ENTITLEMENT	INTEREST UPON DESTRUCTION	NUMBER OF VOTES
171	19	651	1559	
172	19	845	2239	
173	19	1230	2729	
174	19	650	1559	
175	19	886	2389	
176	20	954	2449	
177	20	651	1599	
178	20	845	2279	
179	20	1228	2769	
180	20	650	1589	
181	20	886	2429	
182	21	954	2489	
183	21	651	1629	
184	21	845	2319	
185	21	1230	2809	
186	21	650	1619	
187	21	886	2469	
188	22	954	2529	
189	22	651	1659	
190	22	845	2359	
191	22	1230	2849	
192	22	650	1649	
193	22	886	2509	
194	23	954	2589	
195	23	651	1689	
196	23	845	2399	
197	23	1233	2889	
198	23	650	1879	
199	23	886	2549	
200	24	954	2609	
201	24	651	1719	
202	24	845	2439	
203	24	1230	2929	
204	24	650	1709	
205	24	886	2589	
206	25	954	2649	
207	25	651	1749	
208	25	845	2479	
209	25	1231	2969	
210	25	650	1739	
211	25	886	2629	
212	26	954	2689	
213	26	651	1779	
214	26	845	2519	
215	26	1231	3009	
216	26	650	1769	
217	26	886	2669	
218	27	1085	4248	
219	27	1118	3888	
220	27	1117	3888	
221	27	1054	4148	
222	28	1548	5188	
223	28	1543	5288	
AGGREGATE PHASE 2		97,676	247,434	
AGGREGATE PHASE 1		87,439	214,775	
TOTAL AGGREGATE		185,115	462,209	

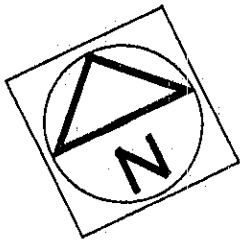
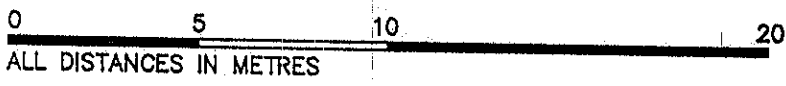
  
 DATED THIS 29<sup>th</sup> DAY OF Sept., 1994. B.C.L.S.

# FLOOR PLANS

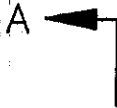
# STRATA PLAN LMS851

SCALE 1:200

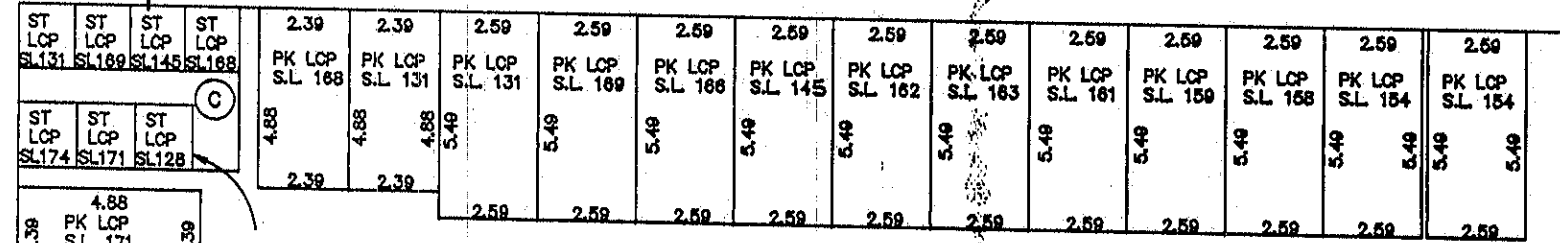
PHASE 2



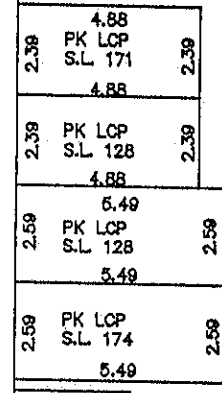
## PARKING LEVEL P-3



NOTE - ST LCP SL 131,145,168,169  
ARE 1.45 by 1.73 TYPICAL



NOTE - ST LCP SL 128,171,174  
ARE 1.52 by 1.73 TYPICAL



NOTE - ST LCP SL 116,117,146,180,220  
ARE 1.38 by 1.90 TYPICAL

NOTE - ST LCP SL 141,151,167  
ARE 1.52 by 1.52 TYPICAL

(SEE SHEET 7)

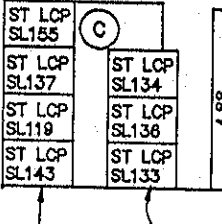
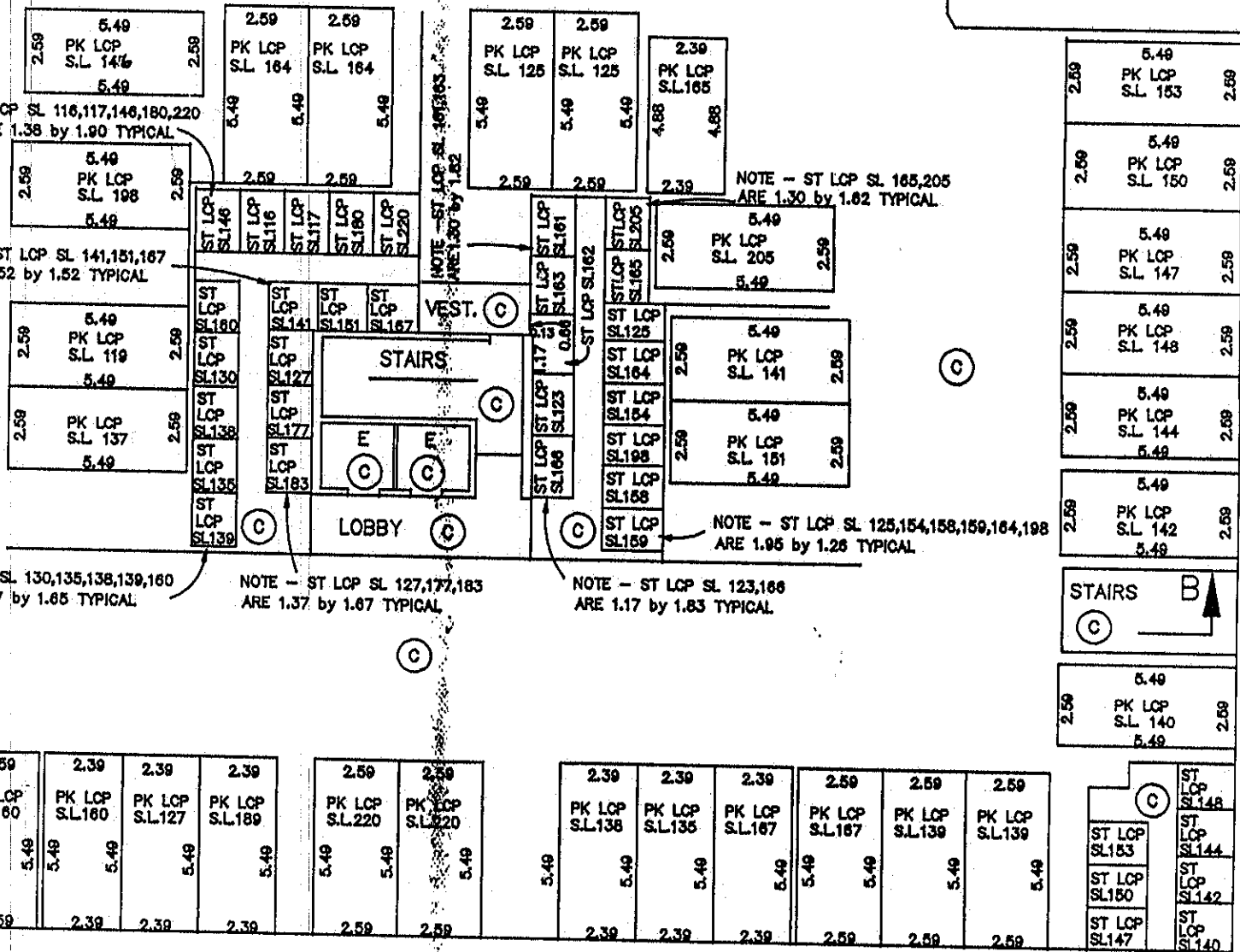
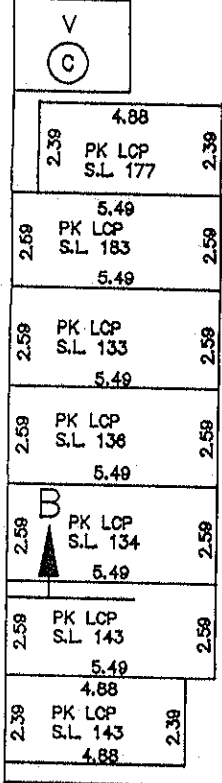
NOTE - ST LCP SL 130,135,138,139,160  
ARE 1.37 by 1.65 TYPICAL

NOTE - ST LCP SL 127,177,183  
ARE 1.37 by 1.67 TYPICAL

NOTE - ST LCP SL 123,166  
ARE 1.17 by 1.83 TYPICAL

NOTE - ST LCP SL 165,205  
ARE 1.30 by 1.62 TYPICAL

NOTE - ST LCP SL 125,154,158,159,164,198  
ARE 1.95 by 1.26 TYPICAL



NOTE - ST LCP SL 133,134,136  
ARE 1.82 by 1.20 TYPICAL

NOTE - ST LCP SL 119,137,143,155  
ARE 1.82 by 1.24 TYPICAL

NOTE - ST LCP SL 147,150,153  
ARE 1.80 by 1.33 TYPICAL

NOTE - ST LCP SL 140,142,144,148  
ARE 1.80 by 1.46 TYPICAL



*RJP*

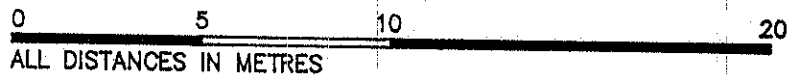
B.C.L.S.

DATED THIS 29<sup>th</sup> DAY OF Sept. 1994.

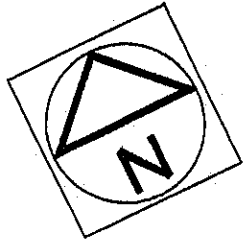
# FLOOR PLANS

# STRATA PLAN LMS851

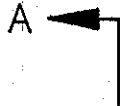
SCALE 1:200



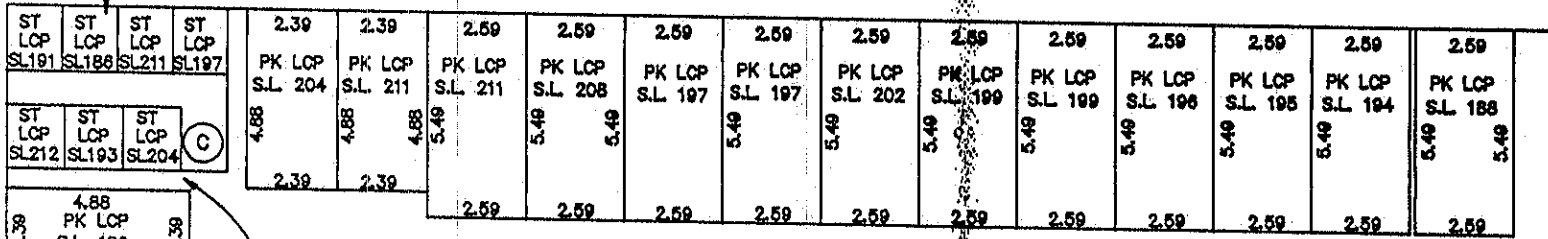
## PHASE 2



### PARKING LEVEL P-2



NOTE - ST LCP SL 186,191,197,211  
ARE 1.45 by 1.73 TYPICAL



NOTE - ST LCP SL 185,189,192,195,218  
ARE 1.38 by 1.83 TYPICAL

NOTE - ST LCP SL 156,208  
ARE 1.52 by 1.52 TYPICAL

NOTE - ST LCP SL 179,187,188,194,196  
ARE 1.37 by 1.65 TYPICAL

NOTE - ST LCP SL 199,202,217  
ARE 1.37 by 1.65 TYPICAL

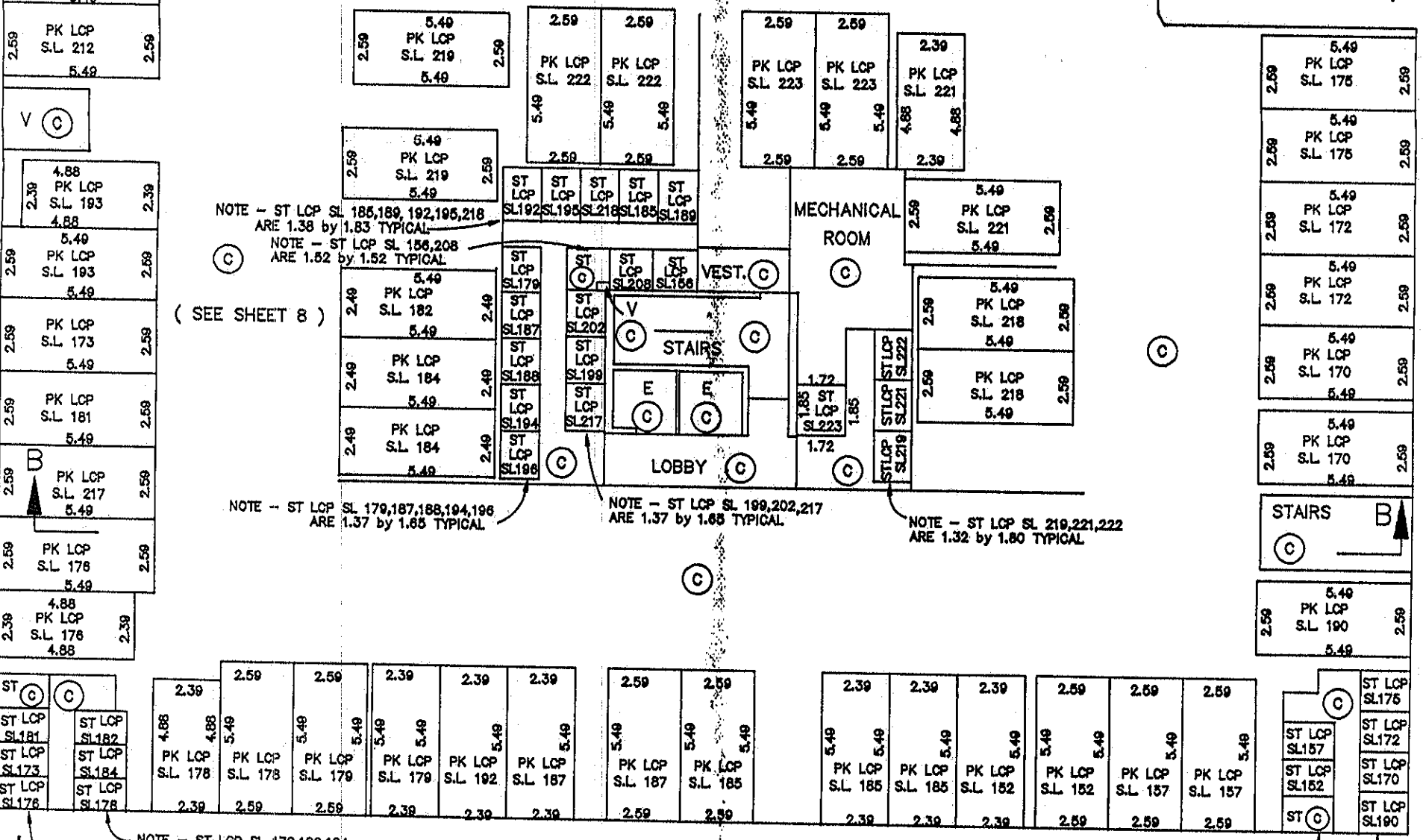
NOTE - ST LCP SL 219,221,222  
ARE 1.32 by 1.80 TYPICAL

NOTE - ST LCP SL 178,182,184  
ARE 1.83 by 1.19 TYPICAL

NOTE - ST LCP SL 173,176,181  
ARE 1.83 by 1.23 TYPICAL

NOTE - ST LCP SL 152,157  
ARE 1.80 by 1.33 TYPICAL

NOTE - ST LCP SL 170,172,175,190  
ARE 1.80 by 1.46 TYPICAL



*RJE.*

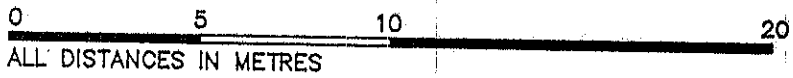
B.C.L.S.

DATED THIS 29<sup>th</sup> DAY OF Sept. 1994.

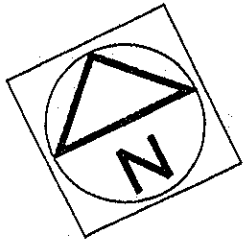
# FLOOR PLANS

# STRATA PLAN LMS851

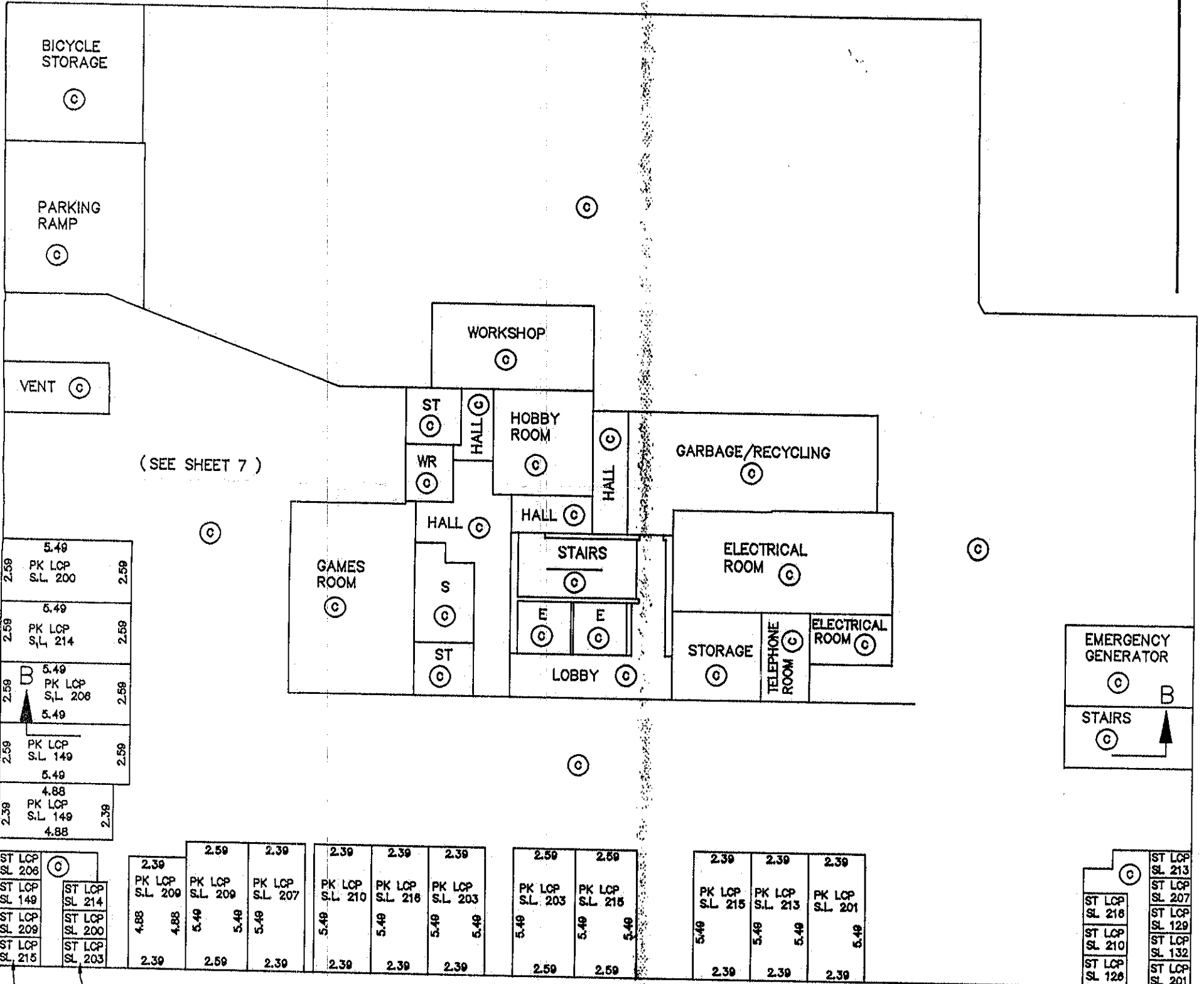
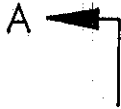
SCALE 1:200



PHASE 2



PARKING LEVEL P-1



(SEE SHEET 7)

5.49	2.59	2.59
PK LCP S.L. 200		
5.49	2.59	2.59
PK LCP S.L. 214		
5.49	2.59	2.59
PK LCP S.L. 208		
5.49	2.59	2.59
PK LCP S.L. 149		
4.88	2.39	2.39
PK LCP S.L. 149		
4.88		

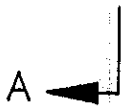
ST LCP SL 208	2.39	2.59	2.39	2.39	2.39	2.39	2.59	2.59	2.39	2.39	2.39	ST LCP SL 213
ST LCP SL 149	PK LCP S.L. 209	PK LCP S.L. 209	PK LCP S.L. 207	PK LCP S.L. 210	PK LCP S.L. 216	PK LCP S.L. 203	PK LCP S.L. 203	PK LCP S.L. 215	PK LCP S.L. 215	PK LCP S.L. 213	PK LCP S.L. 201	ST LCP SL 207
ST LCP SL 209	4.88	4.88	5.49	5.49	5.49	5.49	5.49	5.49	5.49	5.49	5.49	ST LCP SL 218
ST LCP SL 215	2.39	2.59	2.39	2.39	2.39	2.39	2.59	2.59	2.39	2.39	2.39	ST LCP SL 207
												ST LCP SL 210
												ST LCP SL 129
												ST LCP SL 210
												ST LCP SL 132
												ST LCP SL 126
												ST LCP SL 201

NOTE - ST LCP SL 200,203,214 ARE 1.83 by 1.23 TYPICAL

NOTE - ST LCP SL 149,208,209,215 ARE 1.83 by 1.23 TYPICAL

NOTE - ST LCP SL 126,210,216 ARE 1.79 by 1.33 TYPICAL

NOTE - ST LCP SL 129,132,201,207,213 ARE 1.79 by 1.15 TYPICAL



B.C.L.S.

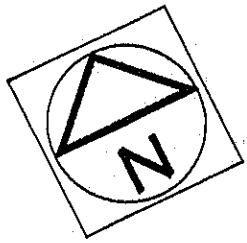
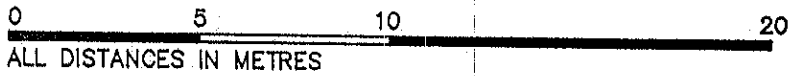
DATED THIS 29<sup>th</sup> DAY OF Sept. 1994.

# FLOOR PLANS

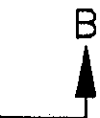
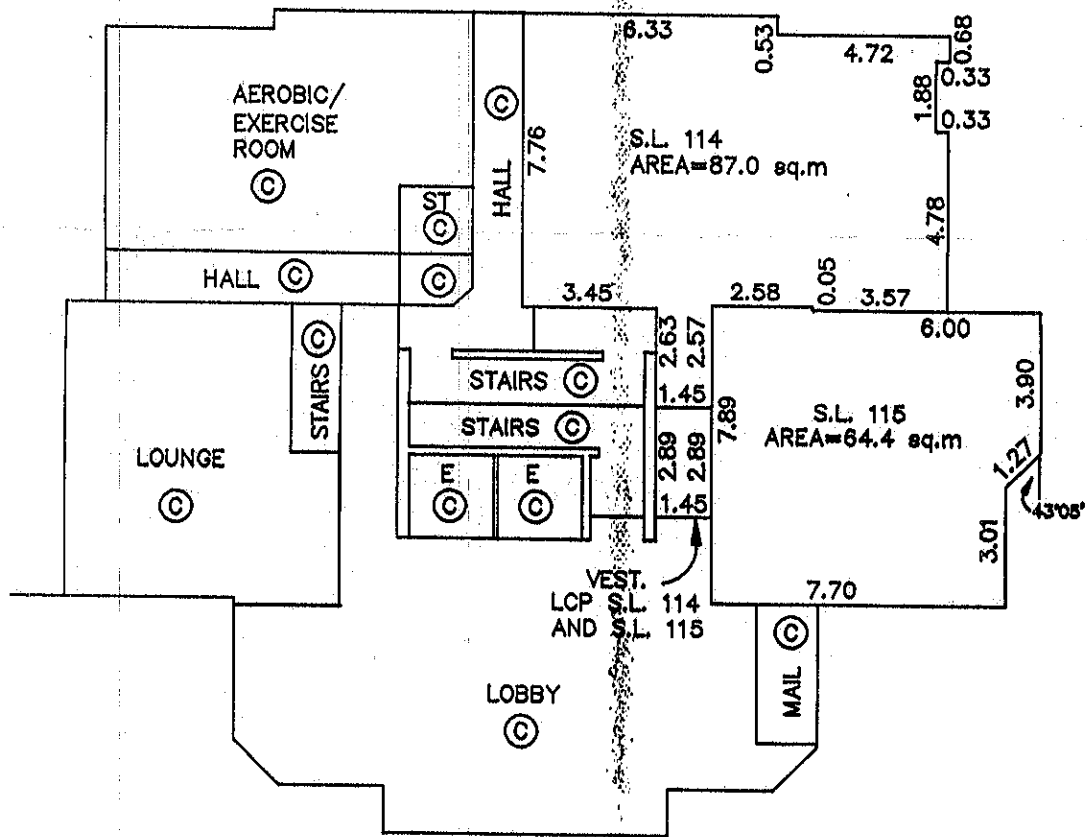
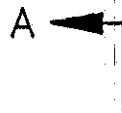
# STRATA PLAN LMS851

SCALE 1:200

## PHASE 2



### GROUND FLOOR



*RJE.*  
B.C.L.S.  
DATED THIS 25<sup>th</sup> DAY OF Sept. 1994.



