

# 3801 Lonsdale Ave.

## North Vancouver, BC

**RE/MAX**  
CREST REALTY



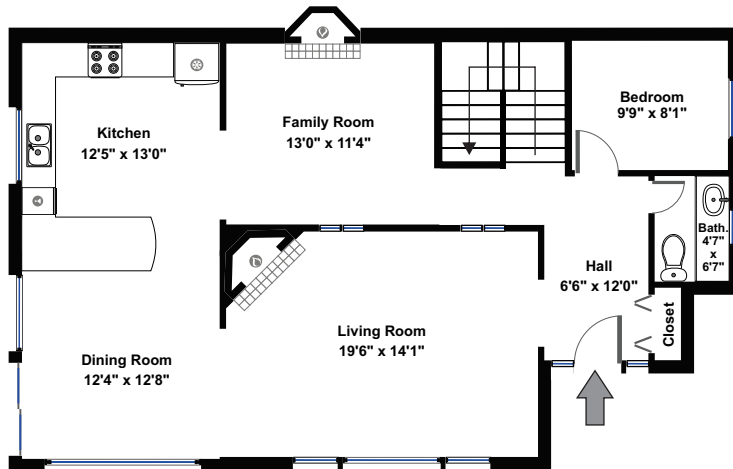
Main Floor	1111 SQ.FT.
Upper Floor	1112 SQ.FT.
Basement	1094 SQ.FT.
<hr/>	
Total Live Area	3317 SQ.FT.



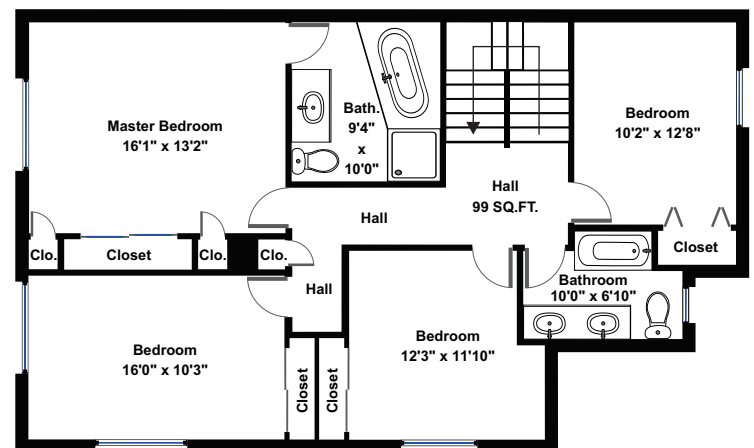
**Kasha Riddle PREC.**

604.803.7070

kashariddle@gmail.com

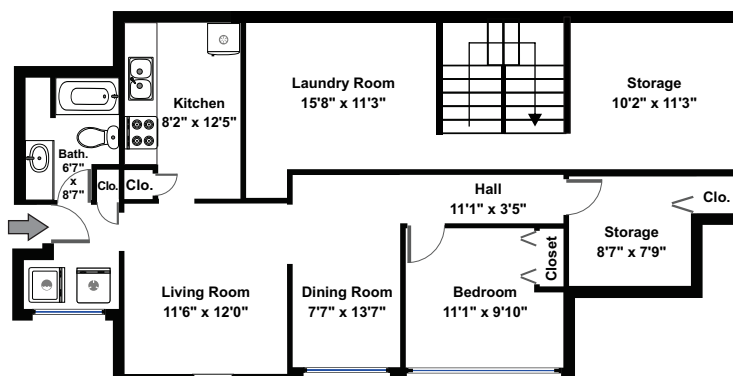


**Main Floor**



**Upper Floor**

**Basement**



This Floor plan is provided without warranty. The Contractor disclaims any warranty including, without limitation, satisfactory quality or accuracy of dimension. Floor plan is for visual marketing purposes and is not guaranteed.

Booked on roomvu.com  
**roomvu**  
Just One Call Away