



# KASHA RIDDLE

Personal Real Estate Corporation

604-803-7070 *A Reputation for Results*

kashariddle@gmail.com

www.kashariddle.com

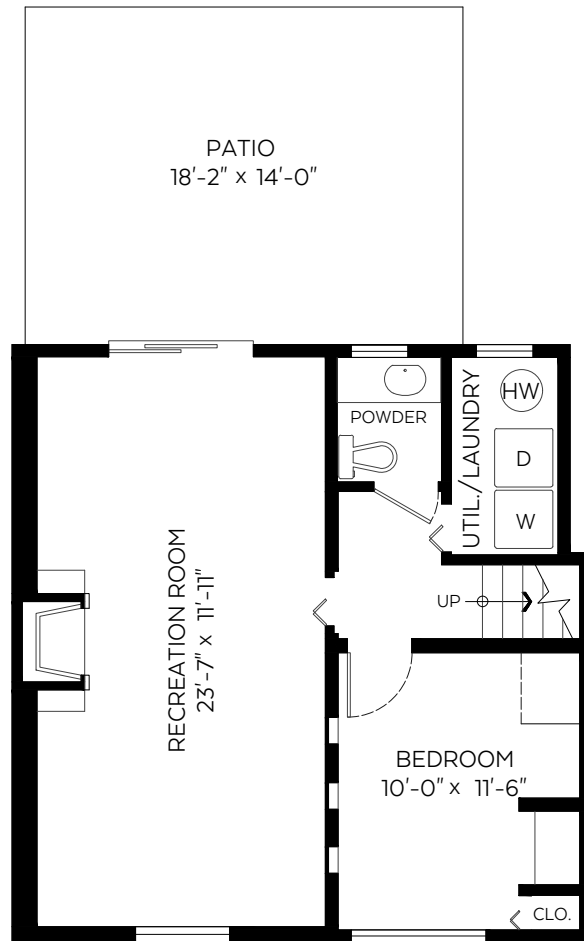
1143 Lodge Road,  
North Vancouver, B.C.

Main Floor:	718 sq.ft.
Upper Floor:	651 sq.ft.
Lower Floor:	585 sq.ft.

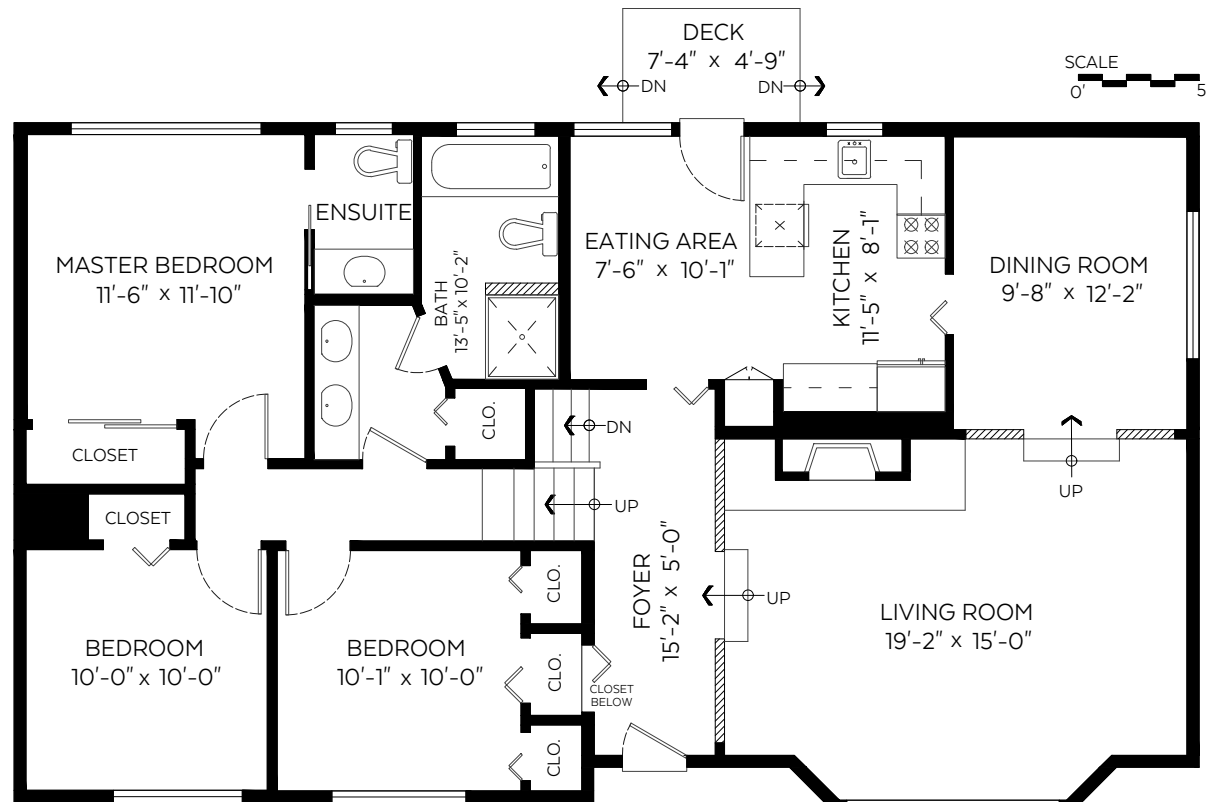
**Total:** 1,954 sq.ft.

## Auxiliary Area

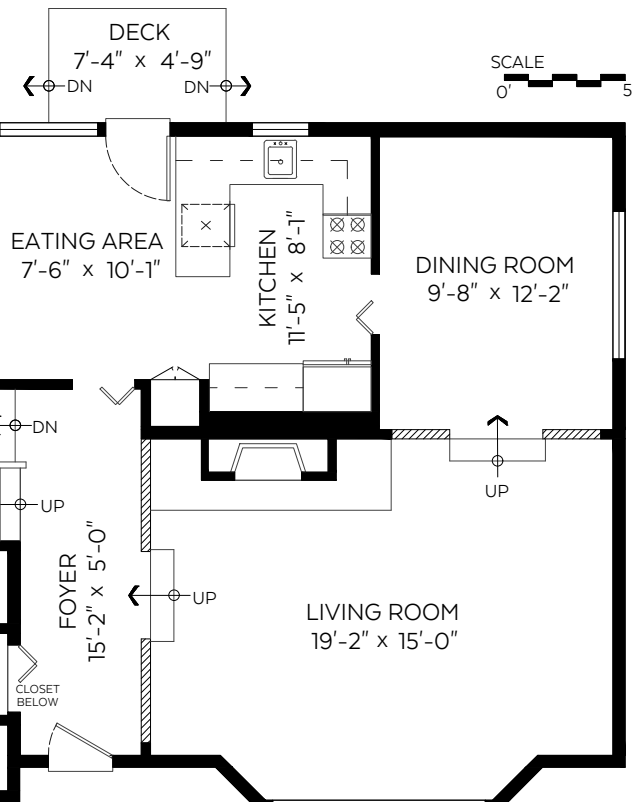
Patio:	254 sq.ft.
Deck:	35 sq.ft.



**Lower Floor Plan**  
Floor Area: 585 sq.ft



**Upper Floor Plan**  
Floor Area: 651 sq.ft



**Main Floor Plan**  
Floor Area: 718 sq.ft

SCALE  
0' 5'

Measured on: June 30, 2017



The floor plan is not suitable for architectural/construction and is covered under E&O. © Excelsior Measuring Inc. 2017. All rights reserved for Excelsior Measuring Inc. Users shall not publish and distribute such material (in whole or in part) and/or incorporate it in other works in any form.

