

**403-6815 188 STREET,
SURREY**

775 SQ. FT.

10'6"-8'0" CEILING

**moving
friends
forward
group**

SAM YOUSSEF

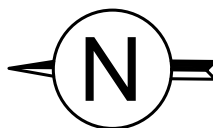
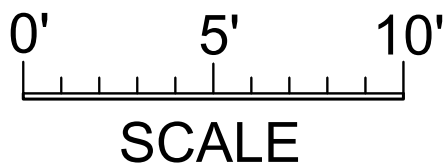
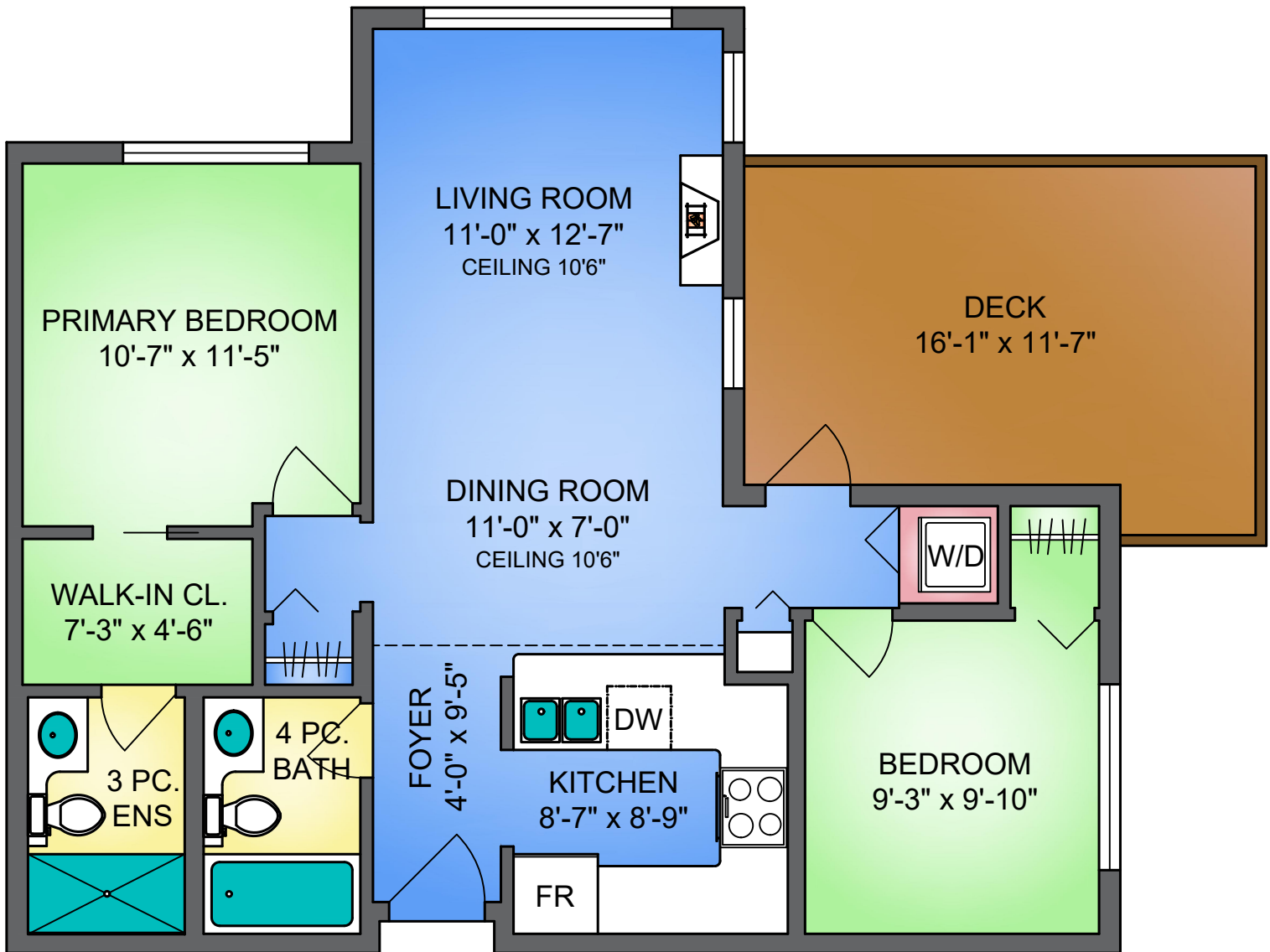
Oakwyn Realty
604-506-1954

sam@movingfriendsforward.com

MARITES KLIEM

Oakwyn Realty
604-710-6705

marites@movingfriendsforward.com



PROPER MEASURE
FROM PRECISION TO PERFECTION
604-786-4191
jeff@propermeasure.com
www.propermeasure.com

403-6815 188 STREET, SURREY

JULY 25, 2025

PREPARED BY PROPER MEASURE.
FOR THE EXCLUSIVE USE OF MARITES KLIEM AND SAM YOUSSEF.
PLANS MAY NOT BE 100% ACCURATE, IF CRITICAL BUYER TO VERIFY E&O INSURED.

FLOOR	AREA (SQ. FT.)	
	FINISHED	DECK / PATIO
FOURTH	775	167

Floor plans are the copyright of Proper Measure Ltd and are licensed for the exclusive use of the individual. If the listing contract should expire Proper Measure Ltd. reserves the right to resell the floor plans. Private resale or modification of the floor plan to a third party by any individual or entity other than Proper Measure Ltd is strictly prohibited.