

# 21226 94B AVE

## LANGLEY, BC

**MARITES KLIEM**

Oakwyn Realty  
604-710-6705  
marites@movingfriendsforward.com

**TYSON KLIEM**

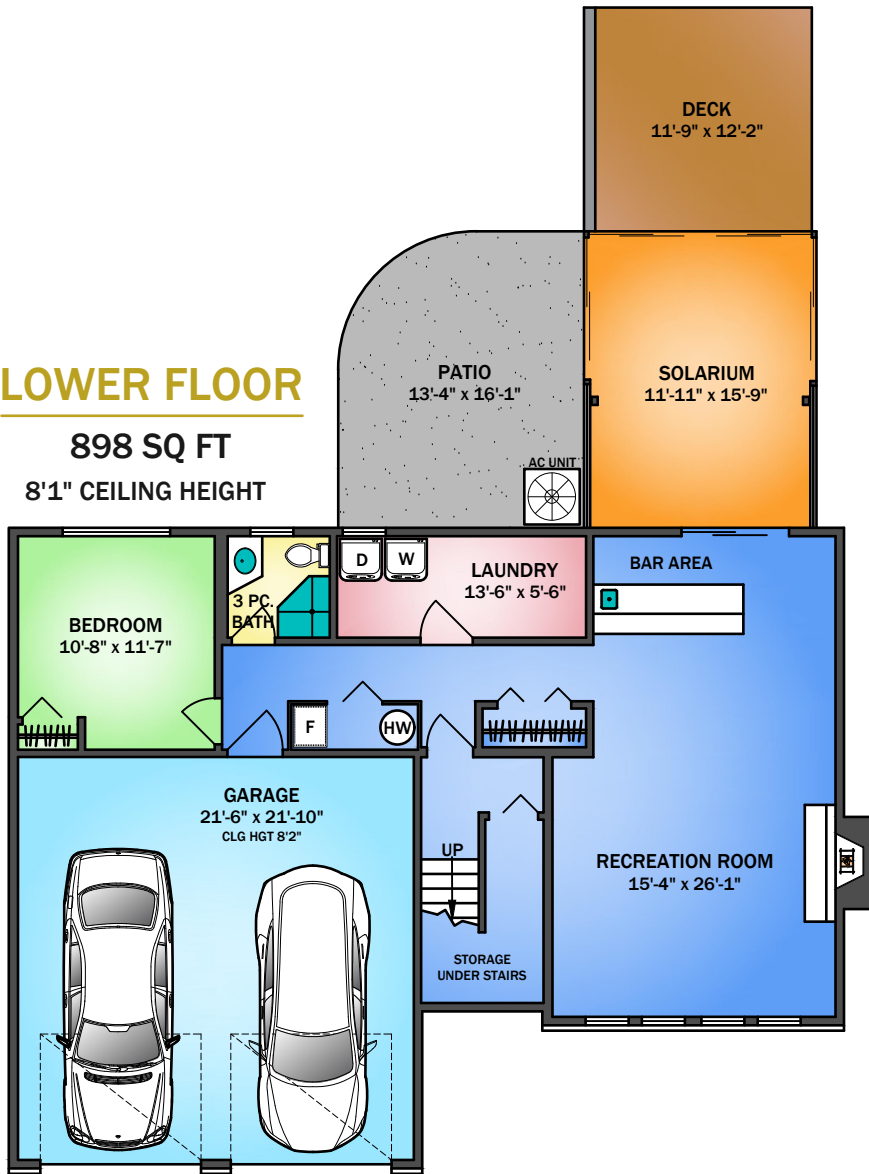
Oakwyn Realty  
604-556-6379  
tyson@movingfriendsforward.com



GROUP

### LOWER FLOOR

898 SQ FT  
8'1" CEILING HEIGHT



### MAIN FLOOR

1243 SQ FT  
8'0" CEILING HEIGHT



### AREA SUMMARY (SQFT)

Plans are approximate; buyers should verify critical dimensions.  
Prepared July 2, 2026 by Proper Measure.  
For the exclusive use of Moving Friends Forward.

FLOOR	FINISHED	GARAGE	SOLARIUM	DECK / PATIO
MAIN	1243			112
LOWER	898	494	203	345
TOTAL	2141	494	203	457

