

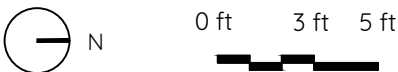
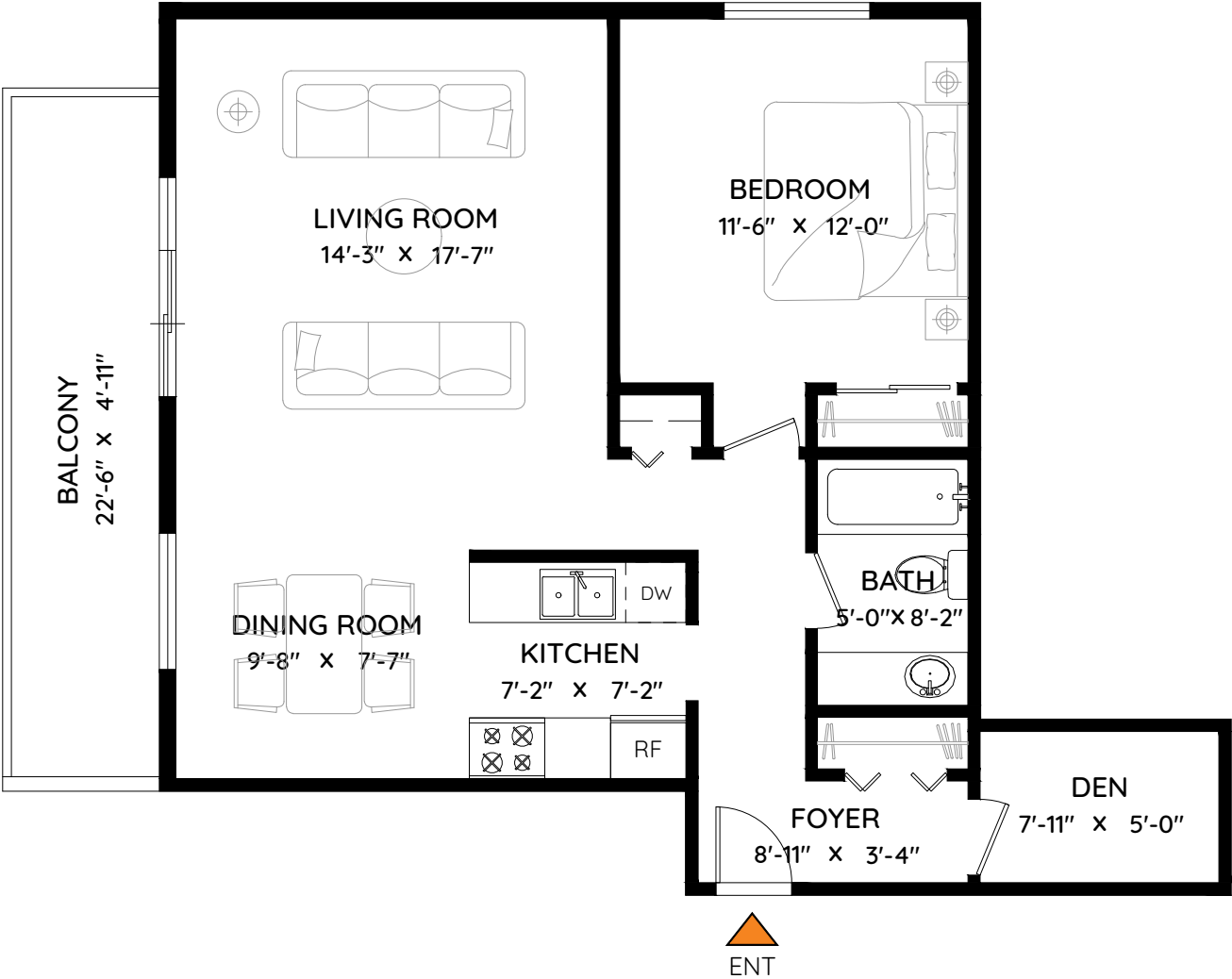
106 - 9425 NOWELL STREET  
CHILLIWACK, BC



**Sam Youssef**  
Oakwyn Realty Ltd.  
604 506 1954  
sam@movingfriendsforward.com



LIVING AREA	789 SQ.FT.
BALCONY	118 SQ.FT.
CEILING HEIGHT	8'-0"



The floor plan and measurements are approximate, typically within +/- 2%. These are intended strictly for advertising purposes. They may encompass unfinished areas and are not intended for architectural or construction applications. There may be variances in the numbers if there were restrictions on property access or if taking precise measurements at the time of measuring isn't feasible. E&O insured.

