

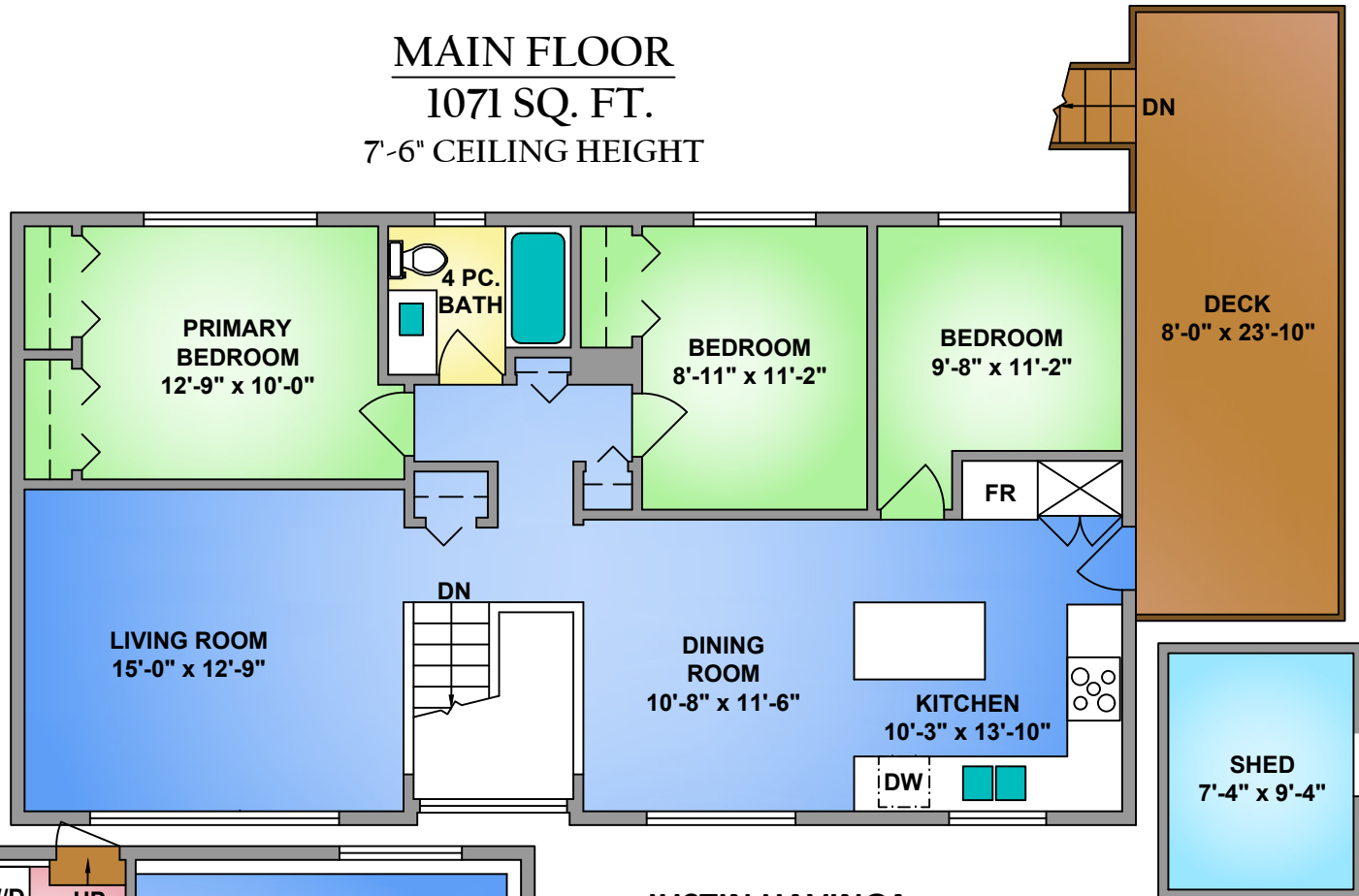
moving  
friends  
forward

GROUP

**MAIN FLOOR**

1071 SQ. FT.

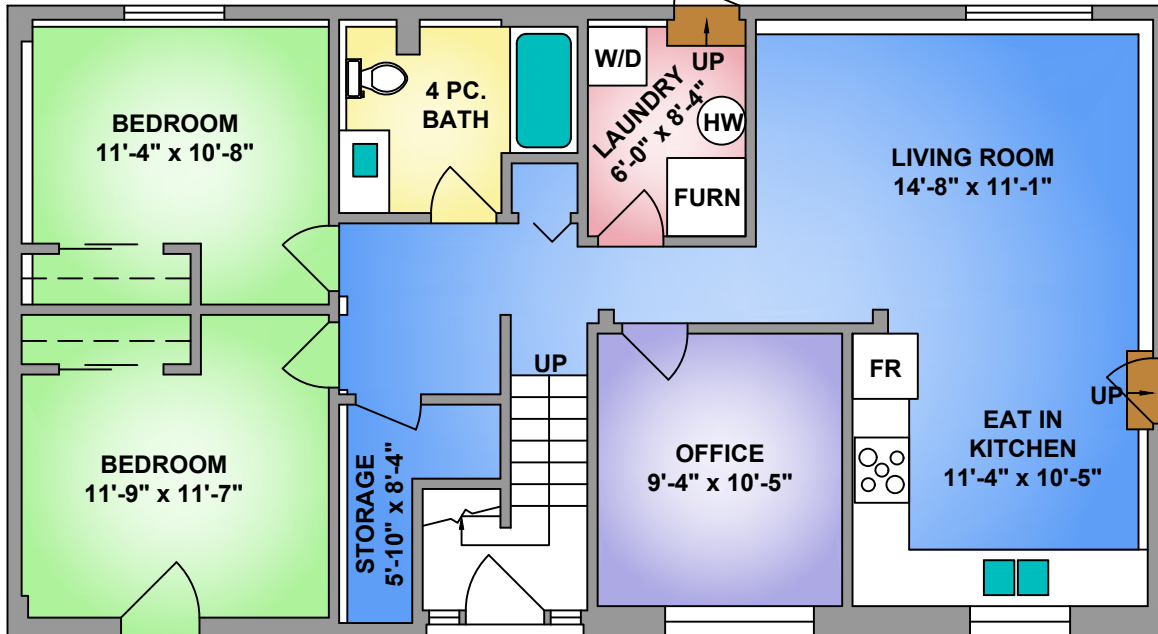
7'-6" CEILING HEIGHT



**LOWER FLOOR**

1071 SQ. FT.

8' CEILING HEIGHT



**JUSTIN HAVINGA**

Oakwyn Realty  
778 240 6903

justin@movingfriendsforward.com



SCALE

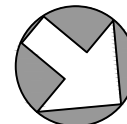
**MARITES KLIEM**

Oakwyn Realty  
604 710 6705

marites@movingfriendsforward.com



**NORTH**



8237 VIOLA PL., MISSION				
JUNE 8, 2026				
PREPARED FOR THE EXCLUSIVE USE OF MOVING FRIENDS FORWARD GROUP. PLANS MAY NOT BE 100% ACCURATE, IF CRITICAL BUYER TO VERIFY.				
FLOOR	AREA (SQ. FT.)			
	FINISHED	GARAGE	SHED	DECK / PATIO
MAIN	1071	0	0	190
LOWER	1071	0	82	0
<b>TOTAL</b>	<b>2142</b>	<b>0</b>	<b>82</b>	<b>190</b>