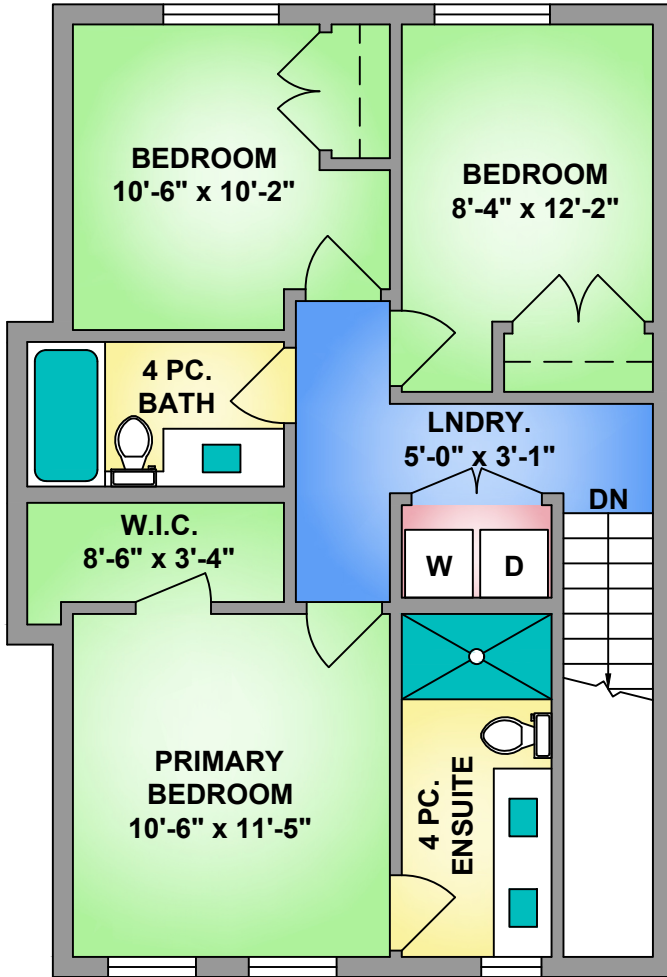


## UPPER FLOOR

645 SQ. FT.

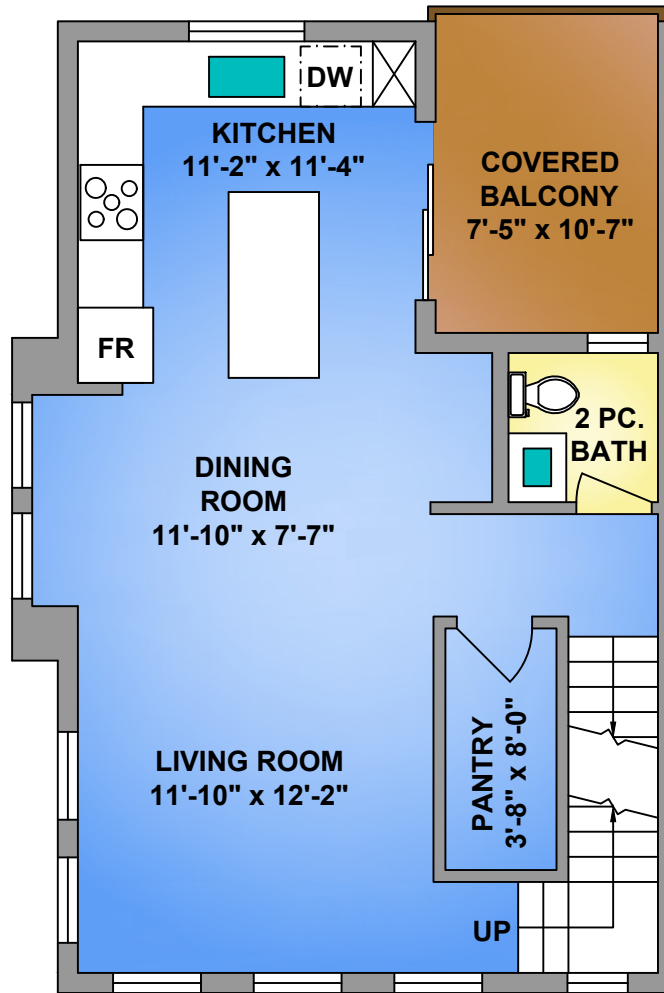
9' CEILING HEIGHT



## MAIN FLOOR

561 SQ. FT.

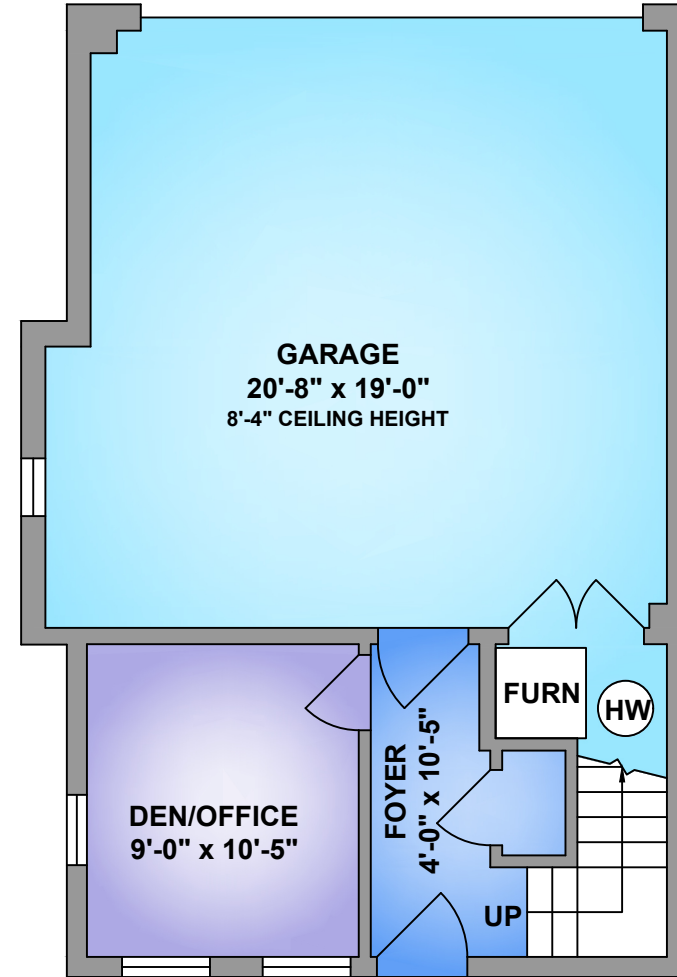
9' CEILING HEIGHT



## LOWER FLOOR

224 SQ. FT.

8' CEILING HEIGHT



GROUP

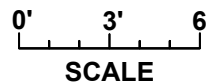
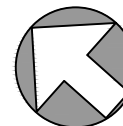
### MARITES KLIEM

Oakwyn Realty  
604 710 6705  
marites@movingfriendsforward.com

### JUSTIN HAVINGA

Oakwyn Realty  
778 240 6903  
justin@movingfriendsforward.com

NORTH



6-2774 MONTROSE AVE., ABBOTSFORD  
MAY 26, 2026  
PREPARED FOR THE EXCLUSIVE USE OF MOVING FRIENDS FORWARD TEAM.  
PLANS MAY NOT BE 100% ACCURATE, IF CRITICAL BUYER TO VERIFY.

| FLOOR        | AREA (SQ. FT.) |            |            |              |
|--------------|----------------|------------|------------|--------------|
|              | FINISHED       | UNFINISHED | GARAGE     | DECK / PATIO |
| UPPER        | 645            | 0          | 0          | 0            |
| MAIN         | 561            | 0          | 0          | 78           |
| LOWER        | 224            | 0          | 421        | 0            |
| <b>TOTAL</b> | <b>1430</b>    | <b>0</b>   | <b>421</b> | <b>78</b>    |