

604-710-6705

marites@movingfriendsforward.com

www.movingfriendsforward.com

Oakwyn Realty

16-10271 Steveston Highway, Richmond

Main Floor: 689 sq. ft.

Upper Floor: 642 sq. ft.

Total Livable: 1,331 sq. ft.

Patio: 134 sq. ft.

Shed: 47 sq. ft.

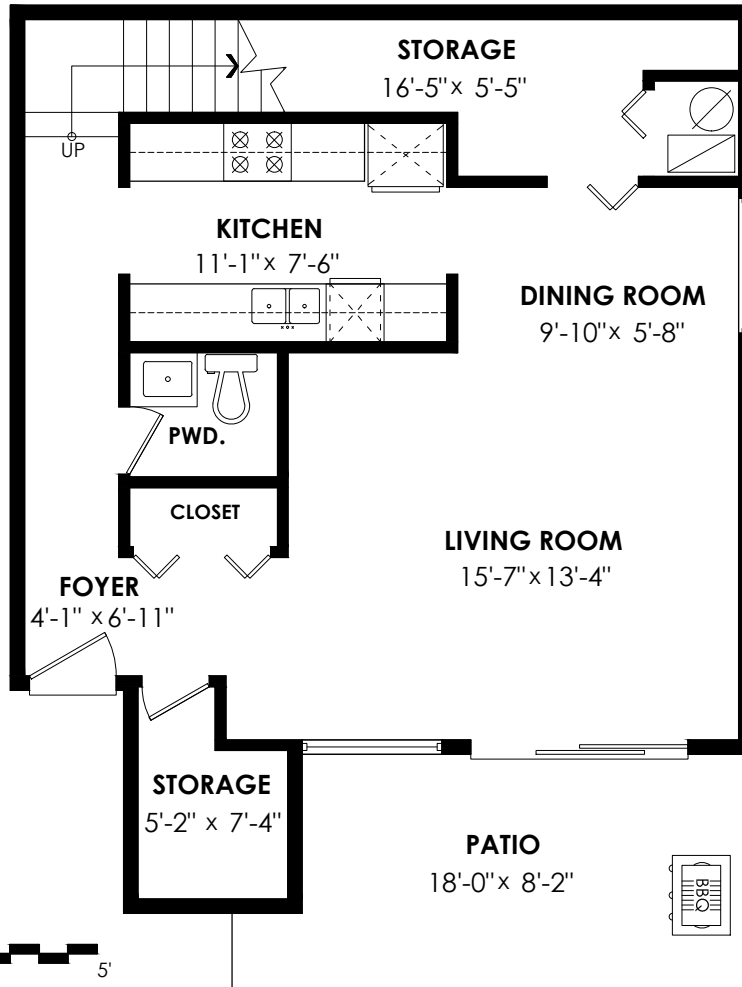
Balcony: 54 sq. ft.

Total Extras: 235 sq. ft.

Main Floor Plan

Floor Area: 689sq.ft.

Ceiling Height: 8'

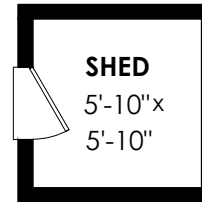
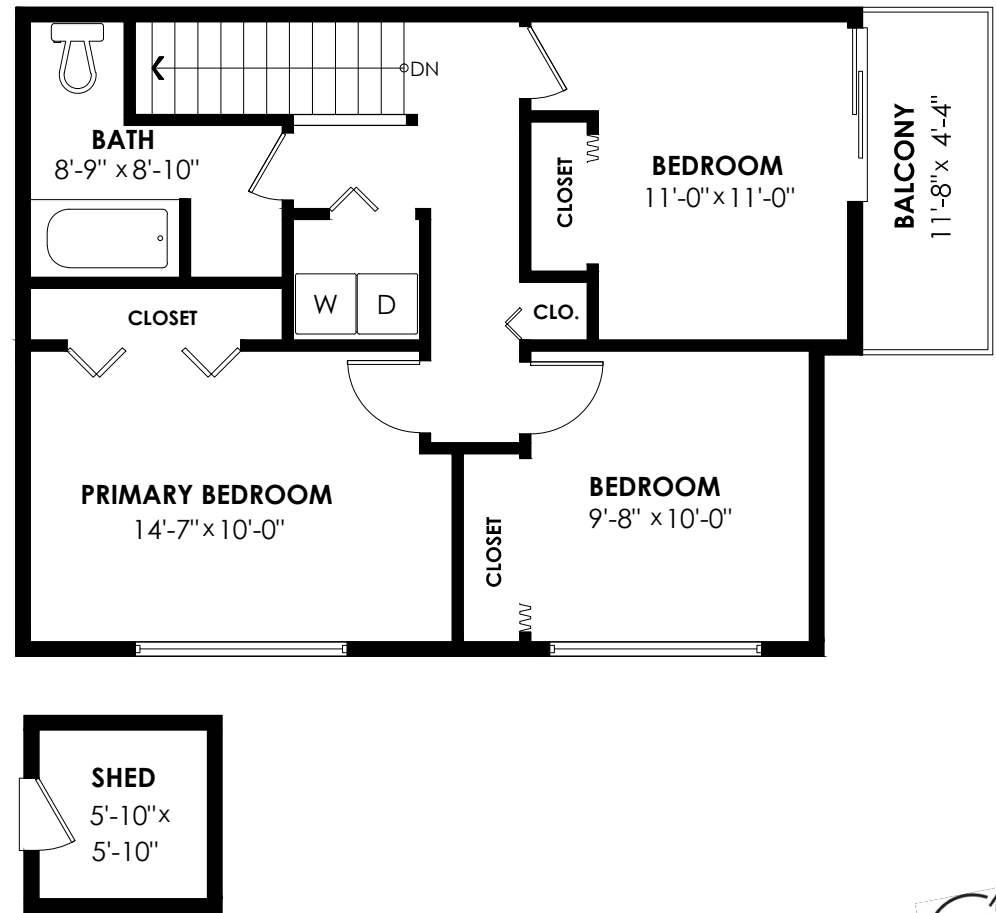


SCALE
0' 5'

Upper Floor Plan

Floor Area: 642 sq.ft.

Ceiling Height: 8'



SHED
5'-10" x
5'-10"

