

**moving
friends
forward**

GROUP

MARITES KLIEM

Oakwyn Realty
604-710-6705
marites@movingfriendsforward.com

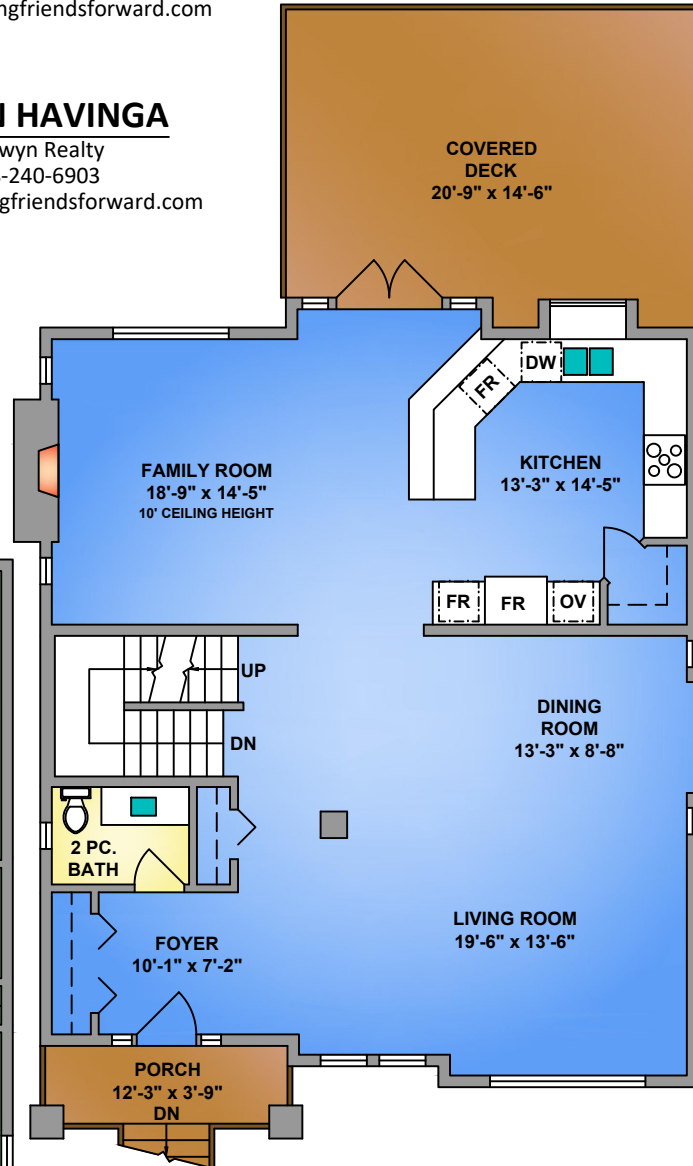
JUSTIN HAVINGA

Oakwyn Realty
778-240-6903
justin@movingfriendsforward.com

MAIN FLOOR

1261 SQ. FT.

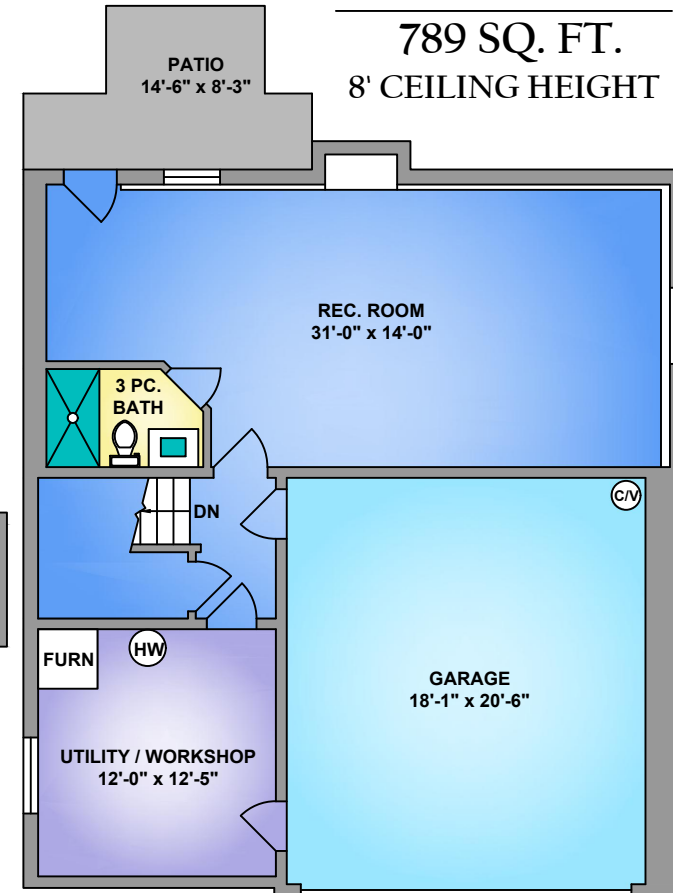
9' CEILING HEIGHT



LOWER FLOOR

789 SQ. FT.

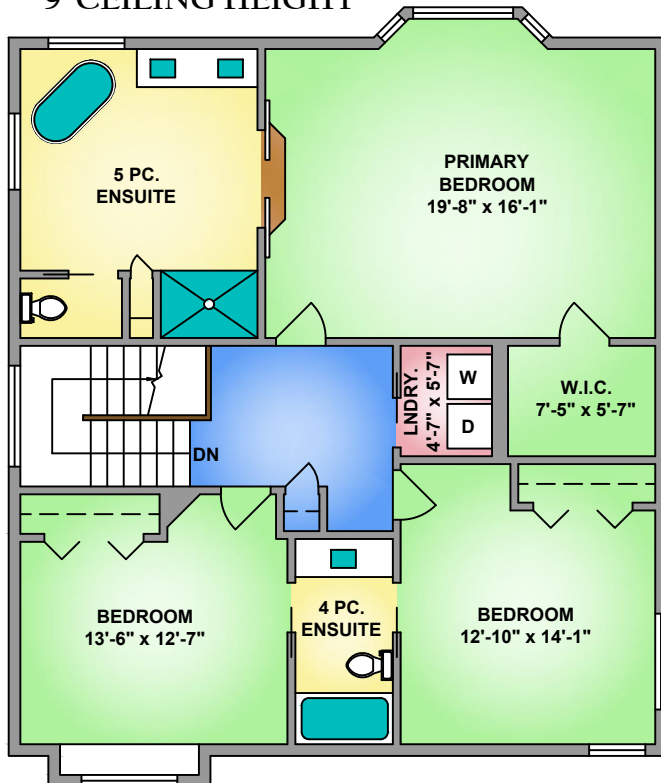
8' CEILING HEIGHT



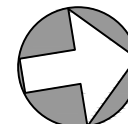
UPPER FLOOR

1225 SQ. FT.

9' CEILING HEIGHT



NORTH



26-33925 ARAKI CRT., MISSION

FEBRUARY 3, 2026

PREPARED FOR THE EXCLUSIVE USE OF MOVING FRIENDS FORWARD GROUP.
PLANS MAY NOT BE 100% ACCURATE, IF CRITICAL BUYER TO VERIFY.

FLOOR	AREA (SQ. FT.)			
	FINISHED	UNFINISHED	GARAGE	DECK / PATIO
UPPER	1225	0	0	0
MAIN	1261	0	0	364
LOWER	789	0	419	91
TOTAL	3275	0	419	455