

Ref. H9913E

STRATA PLAN OF LOT 131  
 D.L. 136, GP. 1  
 PLAN 34438, N.W.D.

SCALE: 1 INCH = 100 FEET

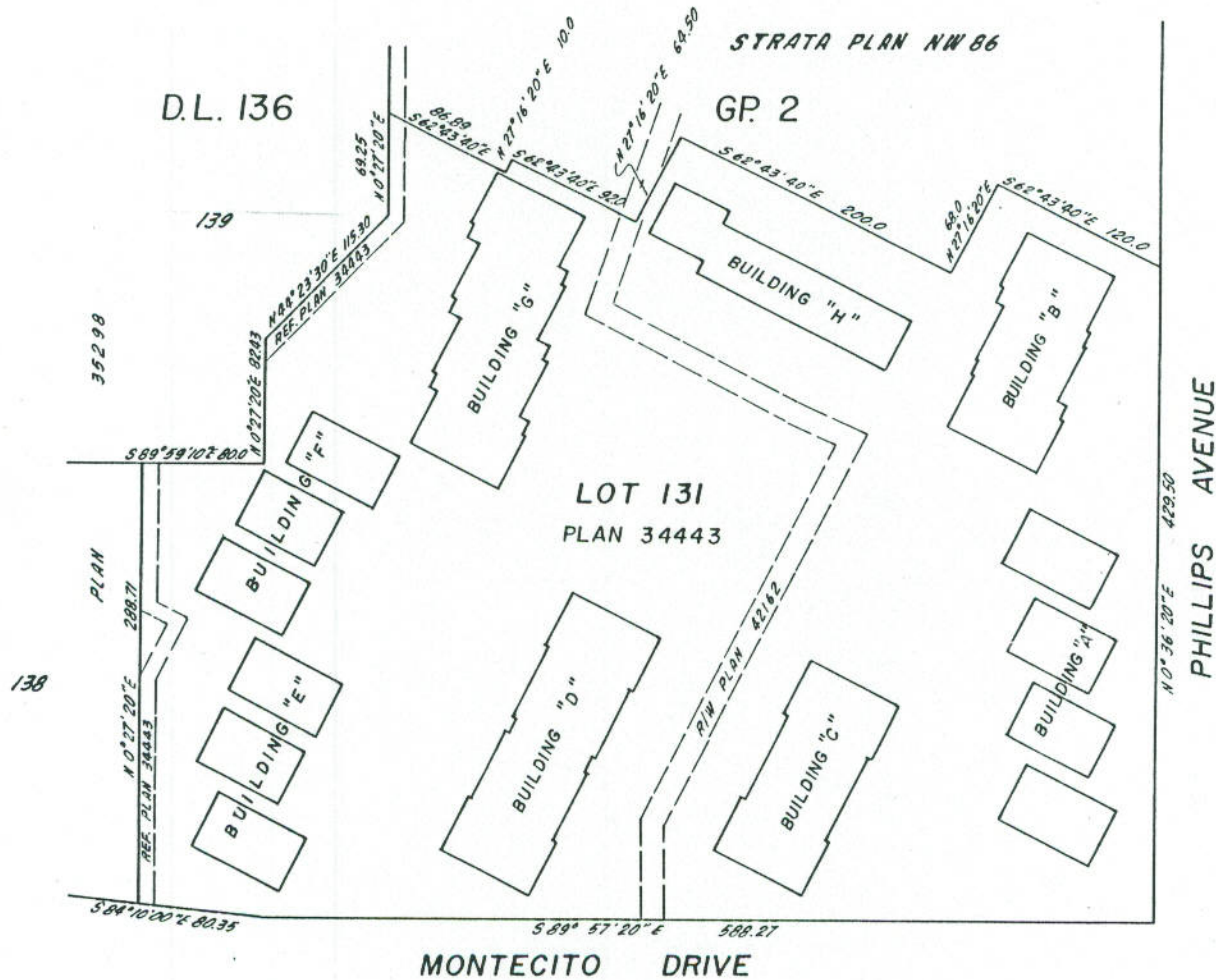
'MUNICIPALITY OF BURNABY'

STRATA PLAN **NW136**  
 DEPOSITED AND REGISTERED IN  
 THE LAND REGISTRY OFFICE  
 AT NEW WESTMINSTER, B.C.  
 THIS 5TH DAY OF APRIL, 1973

REGISTRAR

for single parcel see P.L.A. RP 57840

"MONTECITO VILLA"  
 7331 MONTECITO DRIVE  
 BURNABY, B.C.



LEGEND

SQ. FT. DENOTE SQUARE FEET  
 © DENOTES COMMON PROPERTY

I, GORDON E. McLAREN OF SURREY  
 BRITISH COLUMBIA LAND SURVEYOR, HEREBY  
 CERTIFY THAT THE 8 BUILDINGS ERECTED  
 ON THE PARCEL DESCRIBED ABOVE ARE  
 WHOLLY WITHIN THE EXTERNAL BOUNDARIES

NW 136  
Ref. H9913E

FORM 1

SCHEDULE OF UNIT ENTITLEMENT

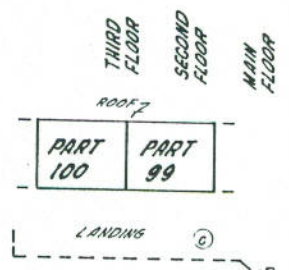
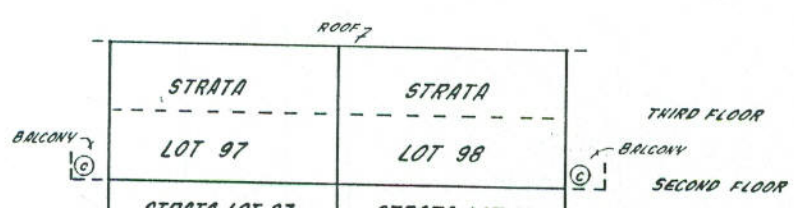
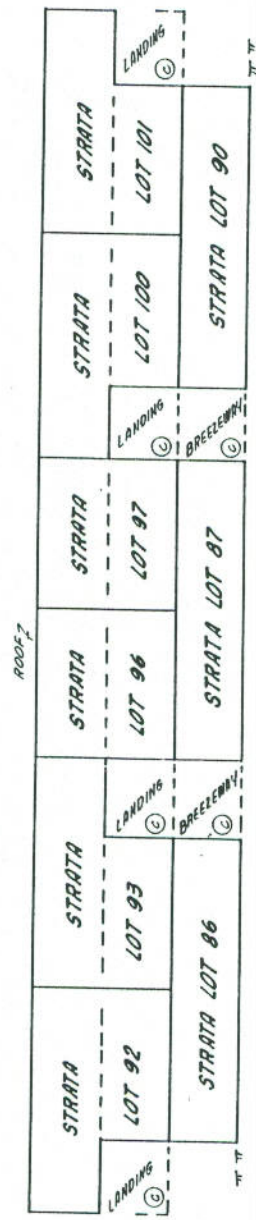
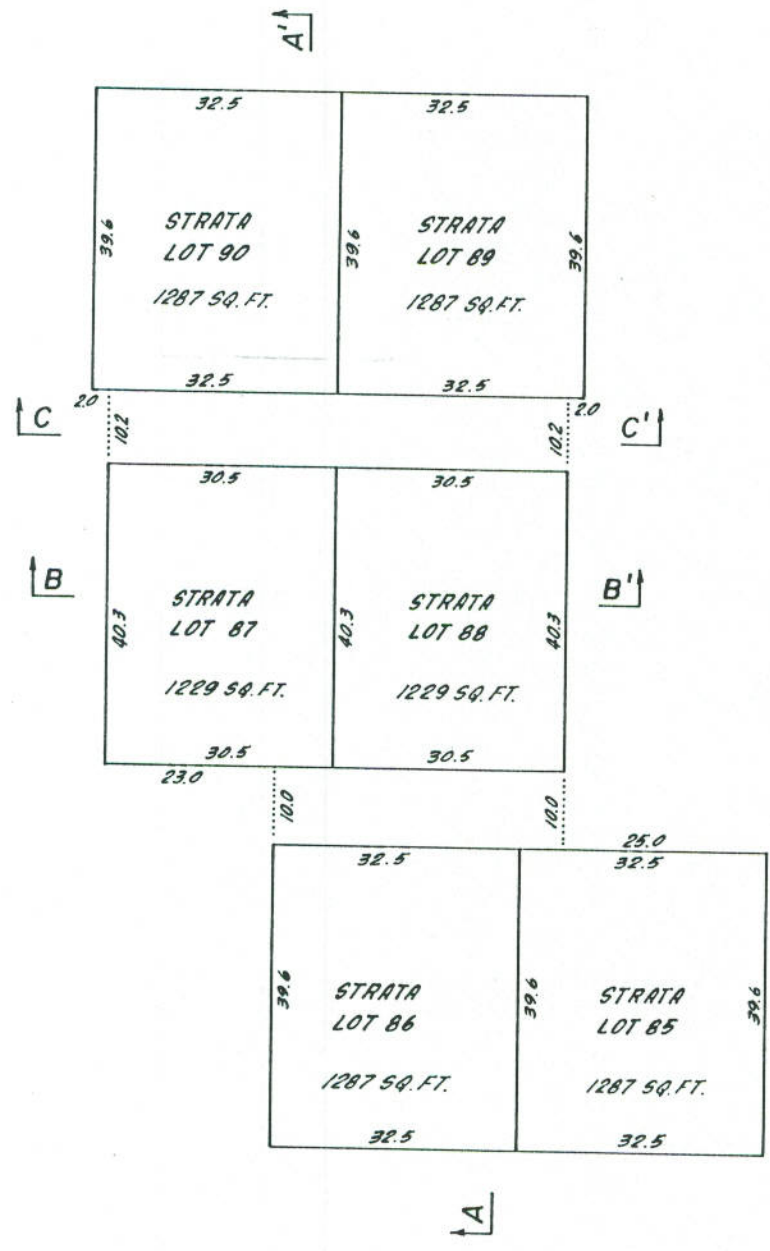
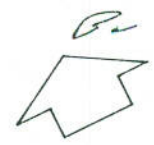
STRATA TITLES ACT

LOT NO.	SHEET NO.	UNIT ENTITLEMENT	FOR OFFICE USE ONLY	
			FIRST CERTIFICATES OF TITLE	
			VOLUME	FOLIO
63	14 & 15	10	J37556 <sup>E</sup>	
64	15	10	J37557 <sup>E</sup>	
65	14 & 15	10	J37558 <sup>E</sup>	
66	14 & 15	10	J37559 <sup>E</sup>	
67	14 & 15	10	J37560 <sup>E</sup>	
68	15	10	J37561 <sup>E</sup>	
69	16 & 17	10	J37562 <sup>E</sup>	
70	14, 16 & 17	10	J37563 <sup>E</sup>	
71	14, 16 & 17	10	J37564 <sup>E</sup>	
72	16 & 17	10	J37565 <sup>E</sup>	
73	16 & 17	10	J37566 <sup>E</sup>	
74	14, 16 & 17	10	J37567 <sup>E</sup>	
75	14, 16 & 17	10	J37568 <sup>E</sup>	
76	16 & 17	10	J37569 <sup>E</sup>	
77	14, 16 & 17	10	J37570 <sup>E</sup>	
78	14, 16 & 17	10	J37571 <sup>E</sup>	
79	14, 16 & 17	10	J37572 <sup>E</sup>	
80	16 & 17	10	J37573 <sup>E</sup>	
81	14, 16 & 17	10	J37574 <sup>E</sup>	
82	14, 16 & 17	10	J37575 <sup>E</sup>	
83	14, 16 & 17	10	J37576 <sup>E</sup>	
84	16 & 17	10	J37577 <sup>E</sup>	
85	18	10	J37578 <sup>E</sup>	
86	18	10	J37579 <sup>E</sup>	
87	18	10	J37580 <sup>E</sup>	
88	18	10	J37581 <sup>E</sup>	
89	18	10	J37582 <sup>E</sup>	
90	18	10	J37583 <sup>E</sup>	
91	19	10	J37584 <sup>E</sup>	
92	18 & 19	10	J37585 <sup>E</sup>	
93	18 & 19	10	J37586 <sup>E</sup>	
94	19	10	J37587 <sup>E</sup>	
95	19	10	J37588 <sup>E</sup>	
96	18 & 19	10	J37589 <sup>E</sup>	
97	18 & 19	10	J37590 <sup>E</sup>	
98	18 & 19	10	J37591 <sup>E</sup>	
99	18 & 19	10	J37592 <sup>E</sup>	
100	18 & 19	10	J37593 <sup>E</sup>	
101	18 & 19	10	J37594 <sup>E</sup>	
102	19	10	J37595 <sup>E</sup>	
103	20	10	J37596 <sup>E</sup>	
104	20	10	J37597 <sup>E</sup>	
105	20	10	J37598 <sup>E</sup>	
106	20	10	J37599 <sup>E</sup>	
107	20	10	J37600 <sup>E</sup>	
108	20	10	J37601 <sup>E</sup>	
109	21	10	J37602 <sup>E</sup>	
110	20 & 21	10	J37603 <sup>E</sup>	
111	20 & 21	10	J37604 <sup>E</sup>	
112	20 & 21	10	J37605 <sup>E</sup>	
113	20 & 21	10	J37606 <sup>E</sup>	
114	20 & 21	10	J37607 <sup>E</sup>	
115	20 & 21	10	J37608 <sup>E</sup>	
116	21	10	J37609 <sup>E</sup>	
117	21	10	J37610 <sup>E</sup>	

NW/36  
Ref. 499/3E

# BUILDING "E" MAIN FLOOR AND SECTIONS

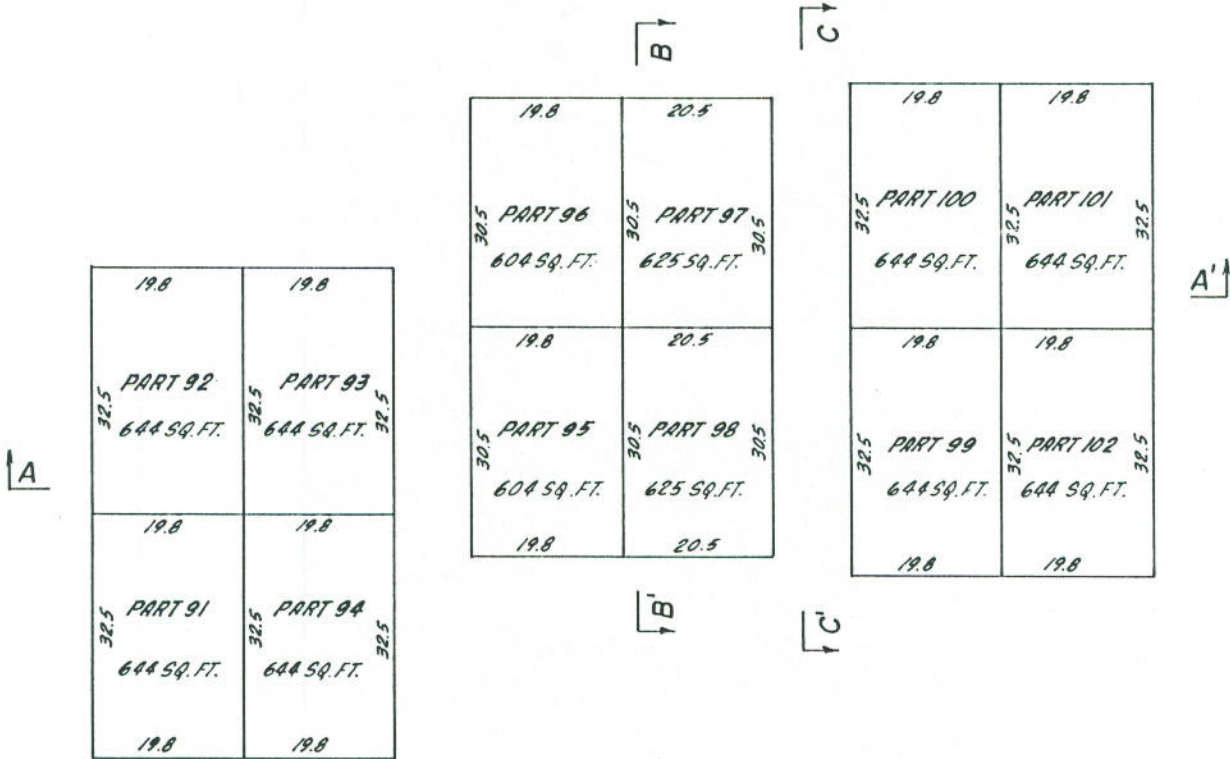
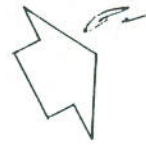
SCALE : 1" = 20'



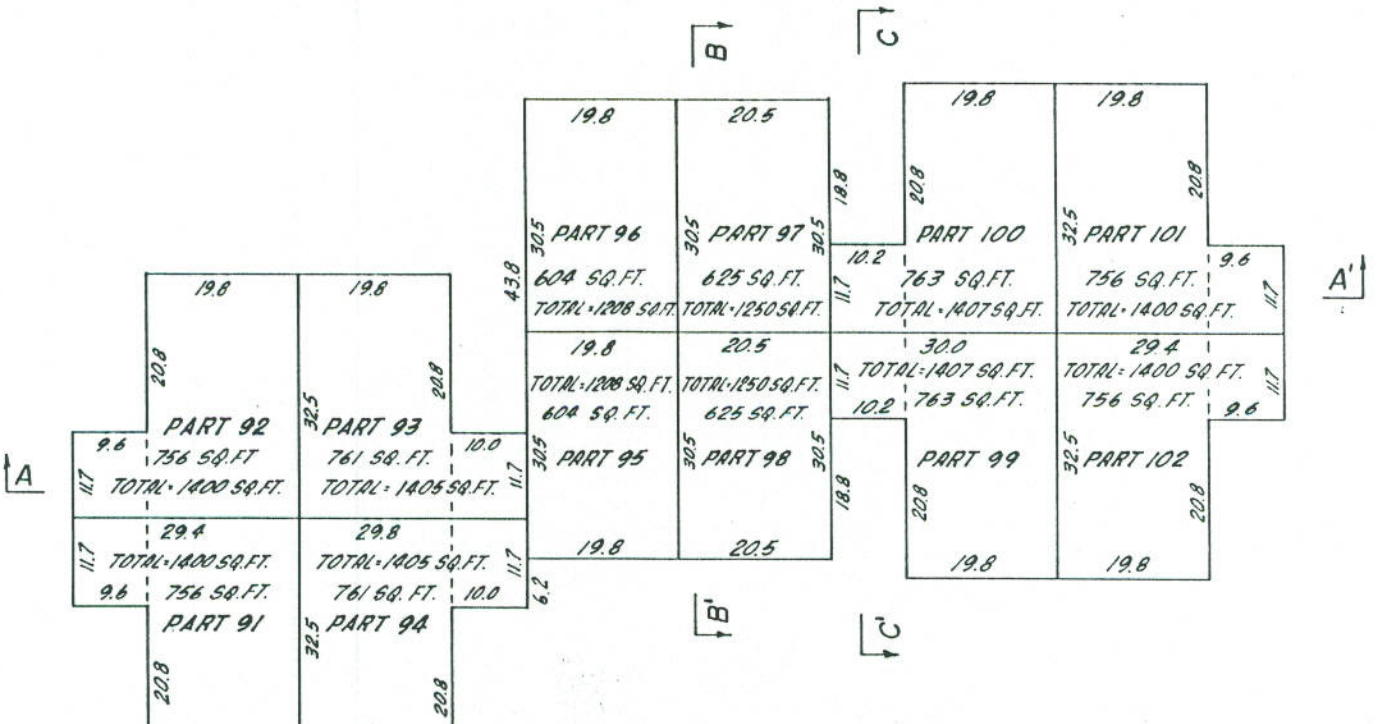
NW/36  
Ref. 499/3E

BUILDING "E"  
FLOOR PLANS

SCALE : 1" = 20'



SECOND FLOOR





NW136  
Ref. H9913E

DEALINGS AFFECTING THE COMMON PROPERTY

FILING		DOCUMENT	
NUMBER	DATE	DATE	NATURE AND PARTICULARS
D79227	29.11.68		RIGHT OF WAY - BURBARY
D79610	2.12.68		EASEMENT REF. PLAN 34443
D79611	2.12.68		EASEMENT REF. PLAN 34443
E36986	10.6.69	Assigned to A8203990	RIGHT OF WAY - B.C. HYDRO
G53247	5.7.71		MORTGAGE - BIC. MONTREAL
H9914	22.72		MODIFICATION OF MTDG. G53247
H9915	22.72		MORTGAGE - TOTAL TRUST COMPANY
H85215	22.8.72		RIGHT OF WAY PLAN 42162
BY120797	26.9.79	Deed of Land	Pt of Lot 266 DL 136 Gpl Plan 50473 included within P/L "A" R.P. 57840
BY120800	26.9.79	Right of Way	The Corporation of the District of Burnaby over Part on R/W Plan 57841
A8203990	03.10.1988	11:00	STATUTORY RIGHT OF WAY BRITISH COLUMBIA HYDRO AND POWER AUTHORITY AND B.C. GAS INC (TACOR No. 74286) Assignment of E36986 Rec'd 10.06.1988 @ 11:00 Intra. Lia.