

# PROUDLY PRESENTING 4330 Keith Road, Terrace B.C.



## Industrial Parcel in Downtown Terrace

### Details:

Taxes: 2022: \$10,200.50

Lot Size: 1.09 Acres 47,480 sqft

Zoning: M2

Sub Area: Terrace City

Neighborhood: 366-Industrial Area

Actual Use: Warehouse, Storage, Waste Management

Lease ending: April 2024

Building size: 2164 sqft

Year Built: 1968

### Comments:

Fabulous Potential: Wonderful sought after site in a highly visible location. Currently being leased to a waste management company; long term tenant

## \$1,850,000

For more information:

Contact: Iain MacDonell

604 328-3929

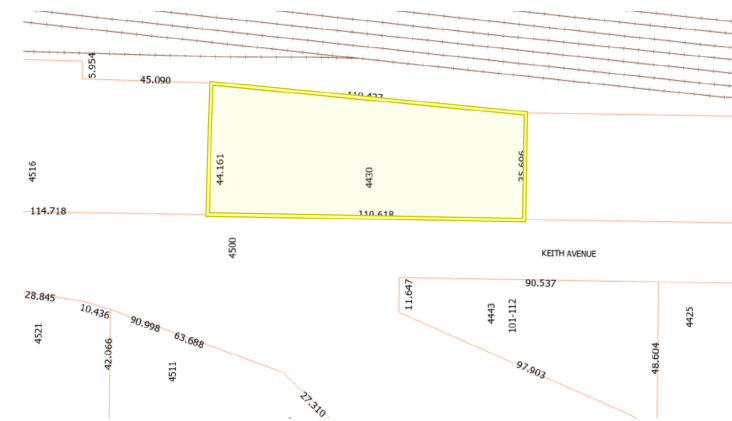
teammacdonell@gmail.com



# Site Photos



# Maps





DEPTH & DIVERSITY ... covering all your real estate needs

**Iain Macdonnell**

604.328.3929

[www.macdonells.com](http://www.macdonells.com)

[iain@macdonells.com](mailto:iain@macdonells.com)

