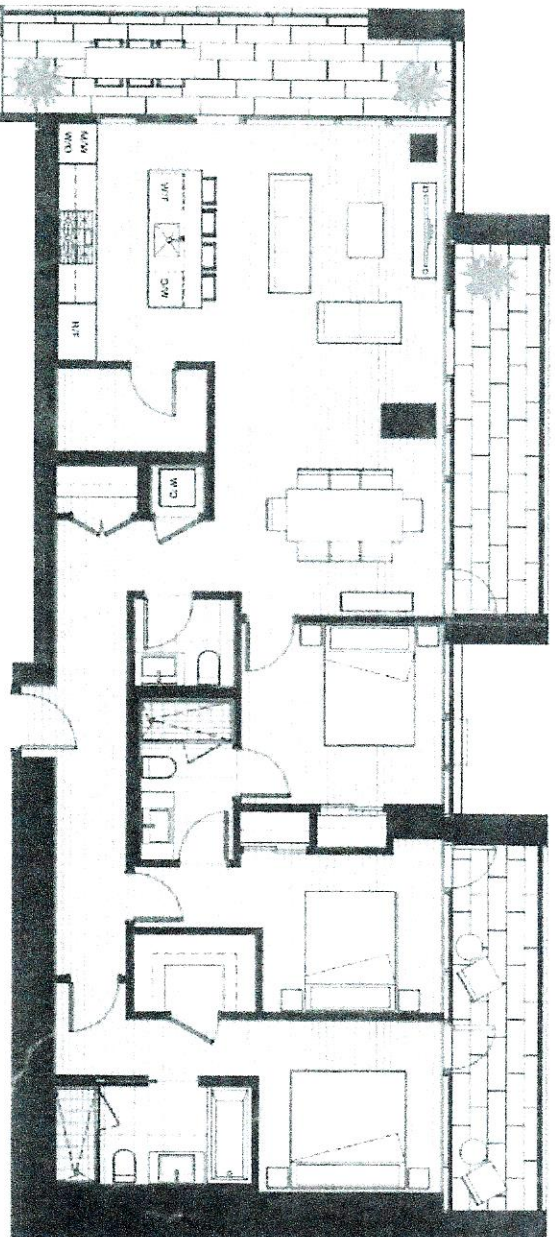


HOUSE



SERIES

3703

THREE BEDROOM

TOTAL LIVING 1871 SQ. FT.

Indoor Living 1487 sq. ft.
Outdoor Living 384 sq. ft.

This partial corner home boasts panoramic city views of False Creek, English Bay, Point Grey, Granville Island, and Mount Baker. The generous interiors are augmented by three copper-clad terraces. The south-facing balcony embraces the living, dining, and kitchen area, which also enjoys a western terrace, while the master and second bedroom share a generous balcony, each with private access.

Floor 37

