



Laurie MacDonell 604 313-2025

RE/MAX Select Properties

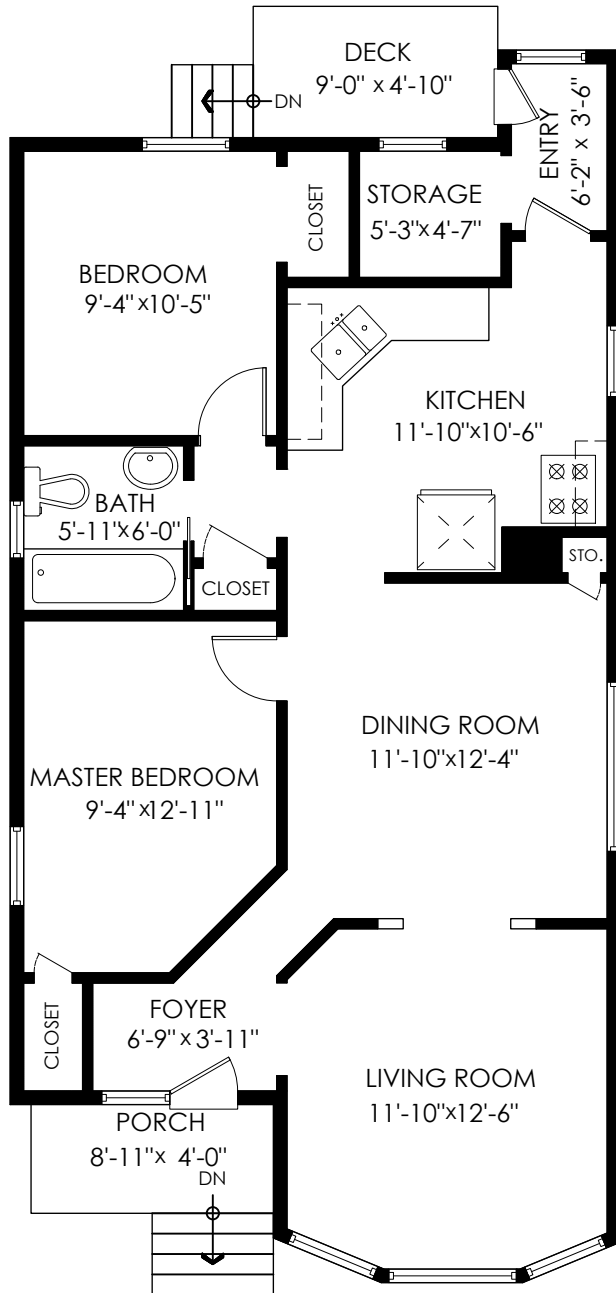
laurie@macdonells.com | www.macdonells.com

2910 Floor: 892 sq.ft.
2912 Floor: 601 sq.ft.
Studio Floor: 266 sq.ft.
Sub Total: 1,759 sq.ft.

Utility Room: 46 sq.ft.
Ext. Laundry: 45 sq.ft.
Total: 1,850 sq.ft.

Deck: 44 sq.ft.
Porch: 36 sq.ft.
Total Extras: 80 sq.ft.

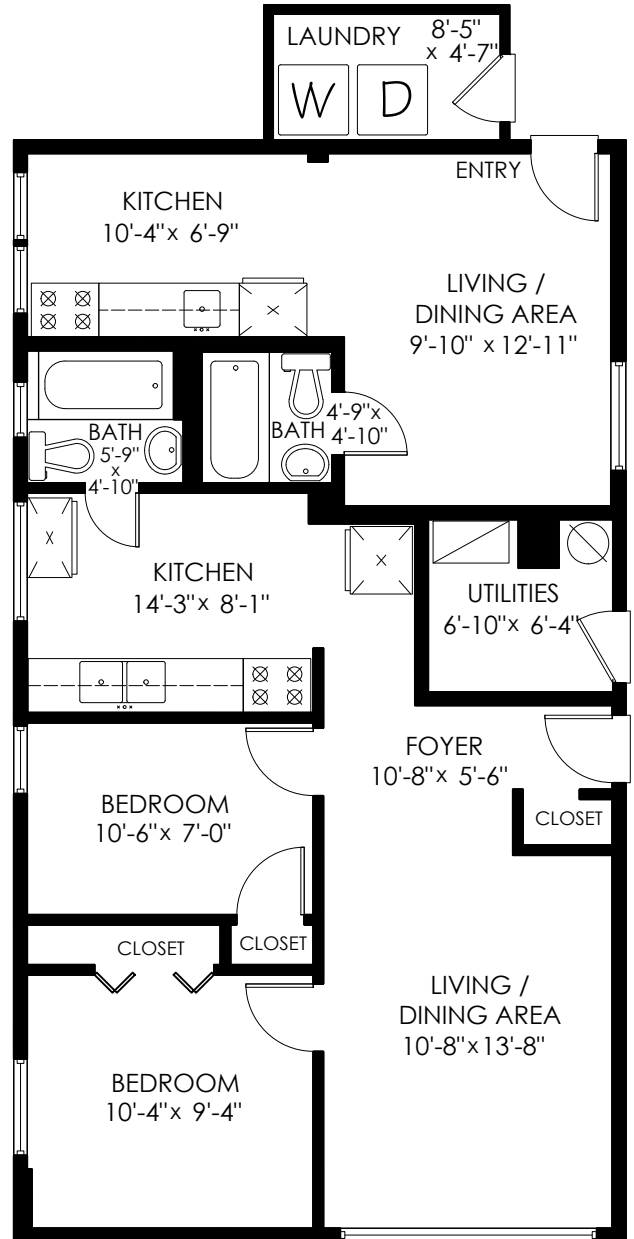
2910-2912 Windsor Street, Vancouver East



Main Floor Plan

2910 Floor Area: 892 sq.ft.

Ceiling Height: 9'-3"



Lower Floor Plan

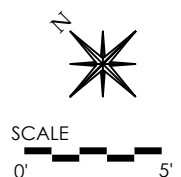
2912 Floor Area: 601 sq.ft.

Studio Area: 266 sq.ft.

Ceiling Height: 7'-9"

Utility Room: 46 sq.ft.

Ext. Laundry: 45 sq.ft.



www.DraftOnSite.com

Measuring, Design & Permits | 604-876-3738

Video Openhouse
www.vopenhouse.ca

E&O Insured for \$3,000,000. Total square foot calculated to gross unit area. SQFT based on interior measurements to exterior walls, not taken from original blueprints, may include unfinished area. This is for marketing purposes only and is not intended for architectural/construction use. All details, sizes & placements should be considered approximate within +/- 2% tolerance.