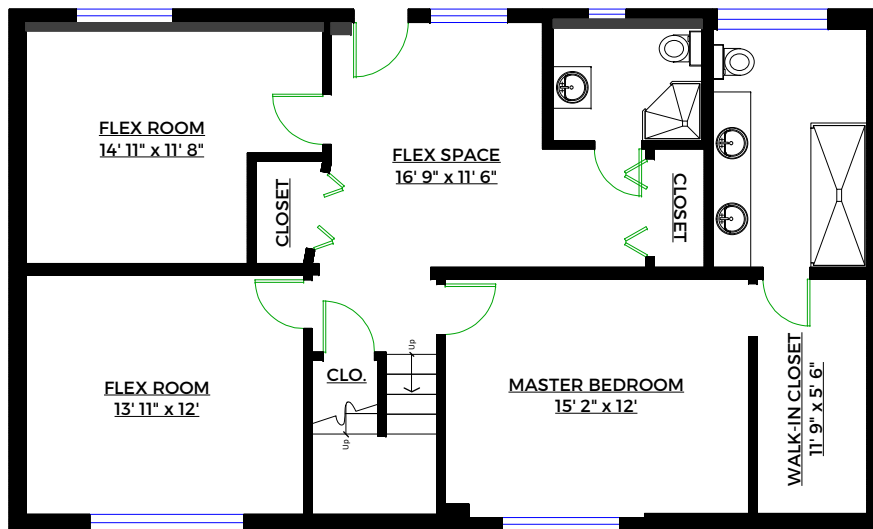


MAIN LEVEL
Floor Area: 1,180 Sq. Ft.



LOWER LEVEL
Floor Area: 1,146 Sq. Ft.



CORTNEY LESSARD

604.616.2678

**2245 Marshall Avenue,
Port Coquitlam, B.C.**

Totals**

Main Level: 1,180 sq. ft.

Lower Level: 1,146 sq. ft.

Total: 2,326 sq. ft.

Deck: 321 sq. ft.

** Approx. based on interior measurements to exterior walls
** Total square footage not taken from original blueprints

