

652 Alderside Road, Port Moody

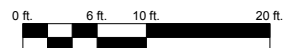
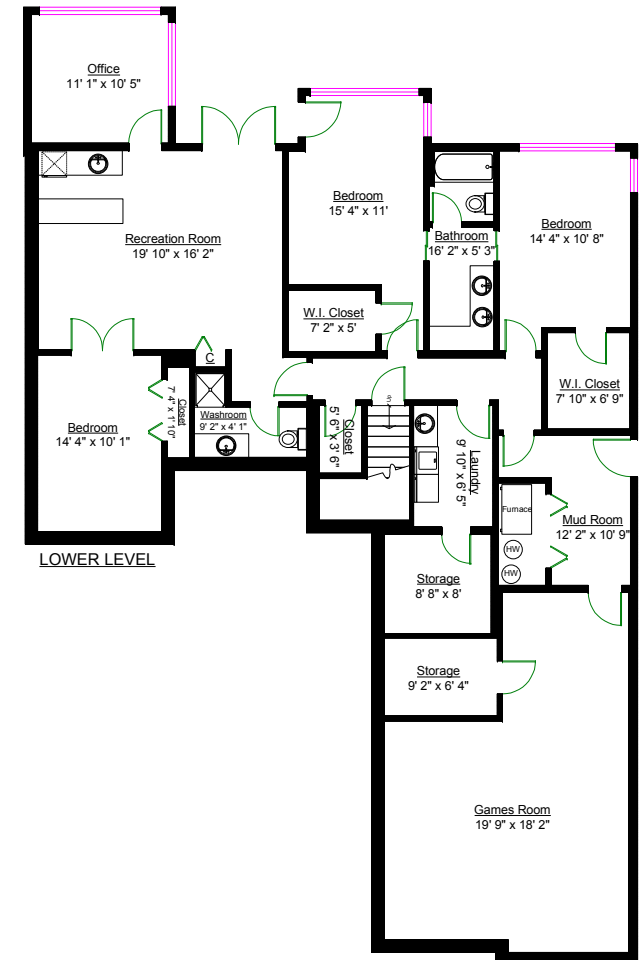
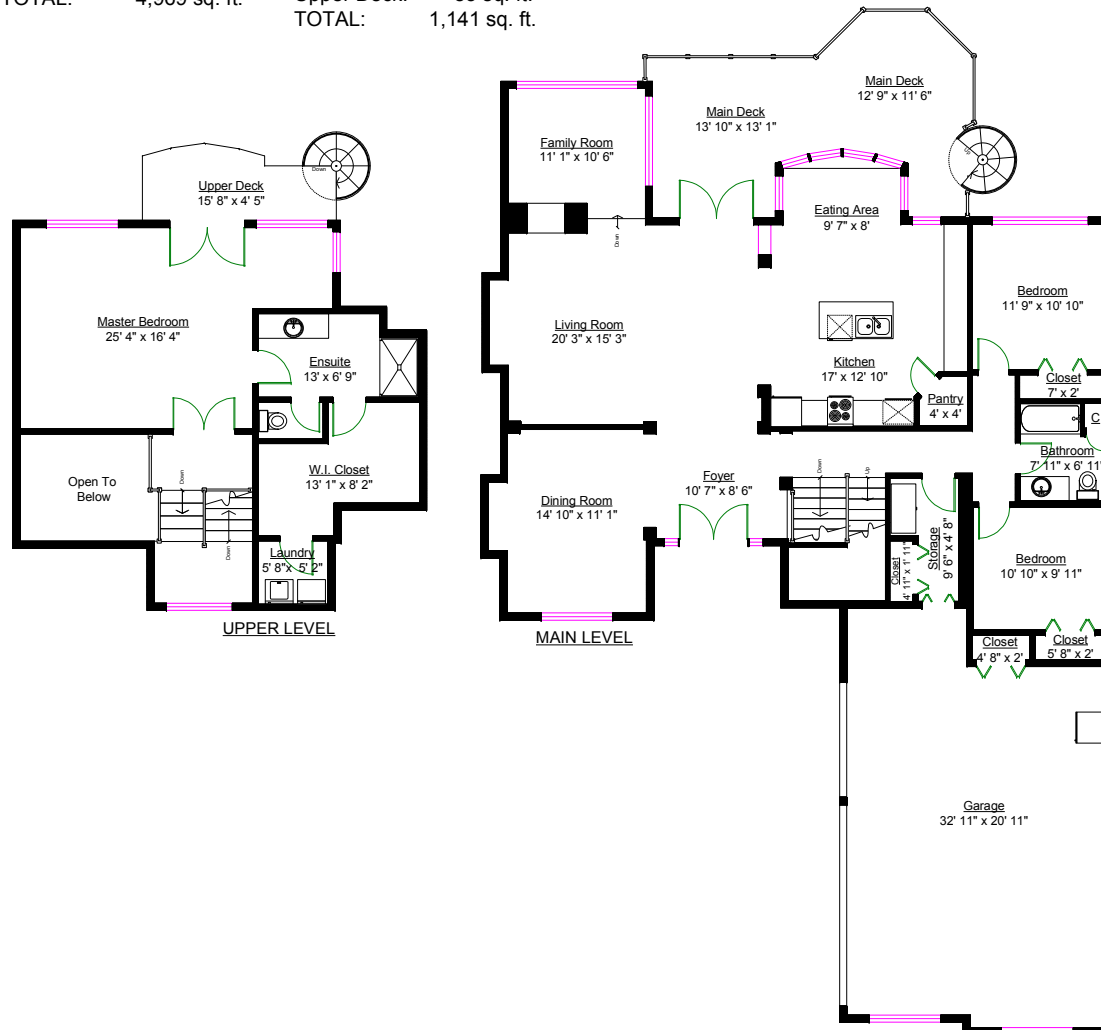
Totals**

Main Level:	1,773 sq. ft.
Upper Level:	783 sq. ft.
Lower Level:	2,413 sq. ft.
TOTAL:	4,969 sq. ft.

Other Areas

Garage: 712 sq. ft.
Mechanical: 32 sq. ft.
Main Deck: 314 sq. ft.
Upper Deck: 83 sq. ft.
TOTAL: 1,141 sq. ft.

Sutton
Kathy Stilwell
604.341.0101



** Approx. based on interior measurements to exterior walls
 ** Total square footage not taken from original blueprints