

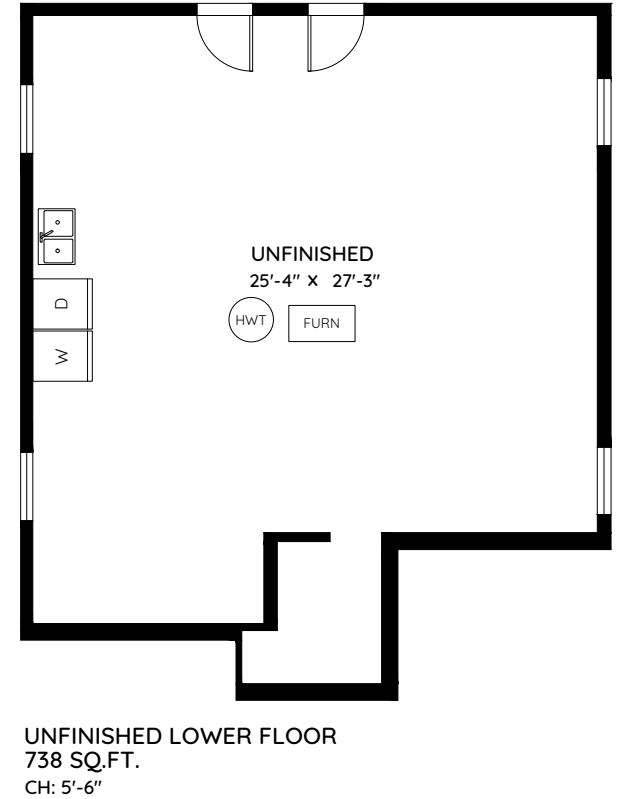
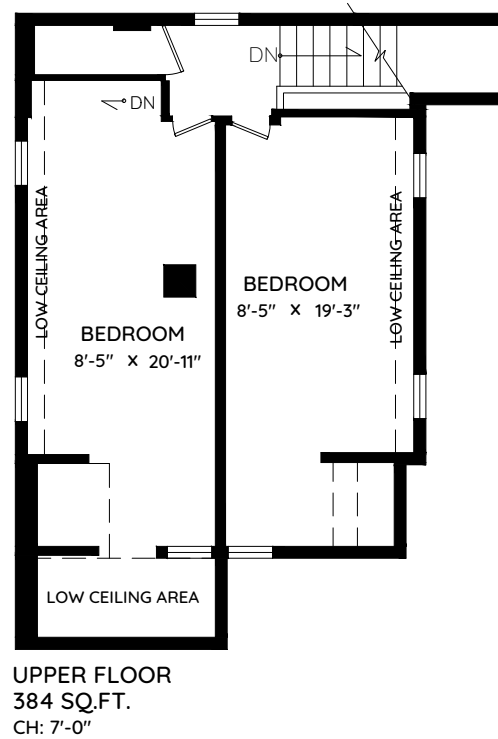
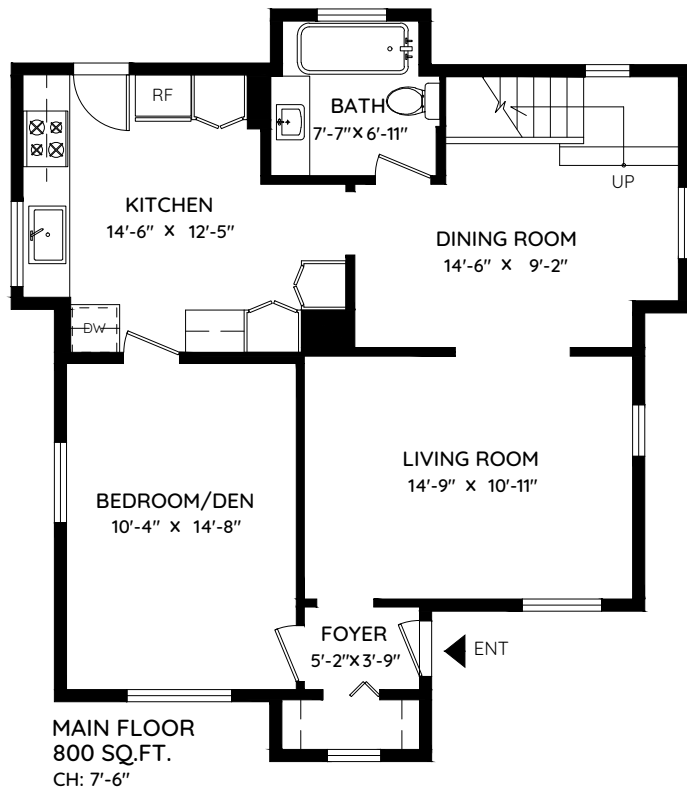
256 BOYNE STREET

NEW WESTMINSTER, BC

MAIN	800 SQ.FT.
UPPER	384 SQ.FT.
TOTAL	1,184 SQ.FT.
UNFINISHED	738 SQ.FT.
TOTAL AREA	1,922 SQ.FT.

NEWWEST  CONDO.COM

 TEAM **CINDYGERING**
PERSONAL REAL ESTATE CORPORATION



0 ft 3 ft 5 ft



The floor plan and the measurements are approximate and are to be used for advertising usage only.
Not suitable for architectural or construction. E&O Insured

keyplan 
plan your space