

884 VICTORIA DRIVE

PORT COQUITLAM, BC

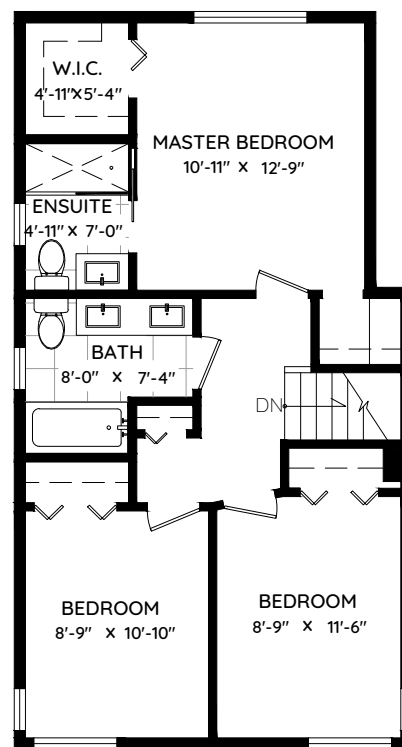
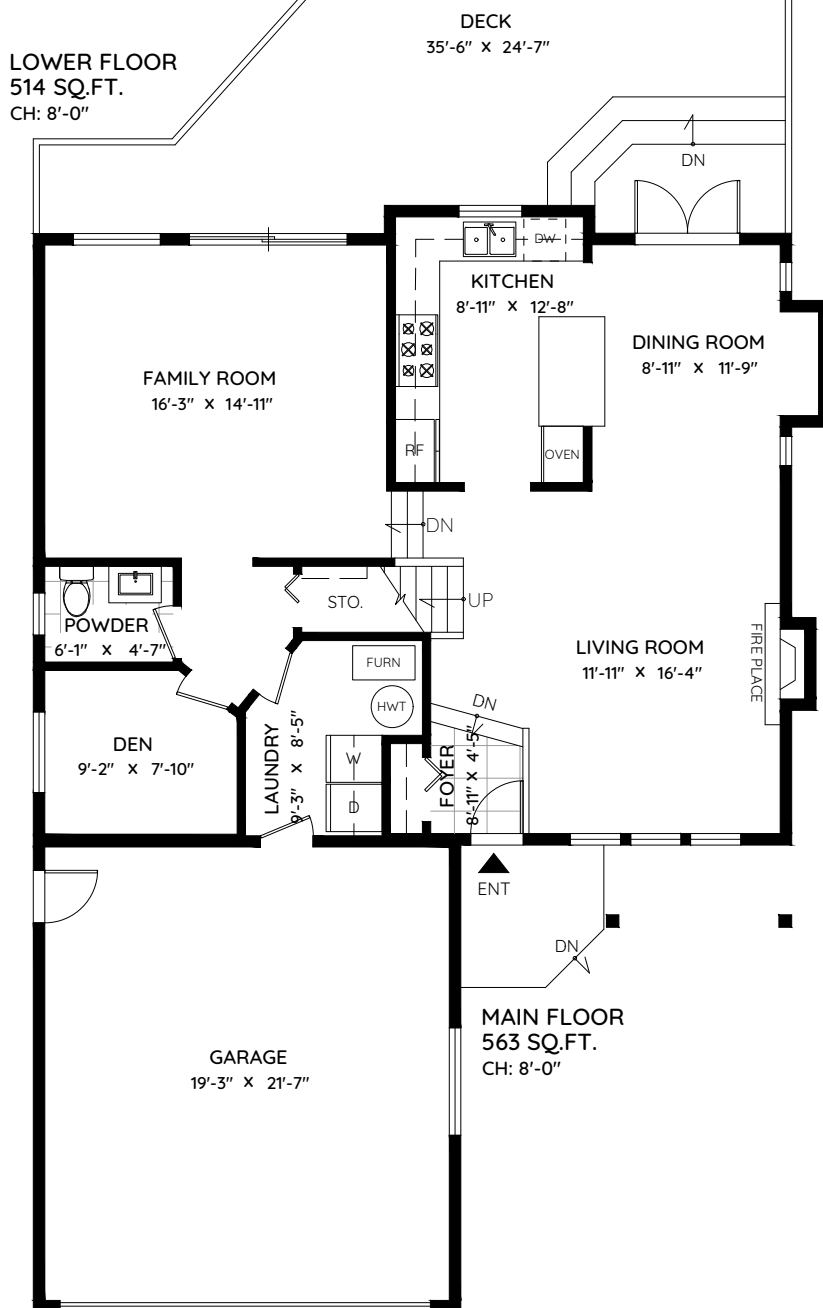
MAIN	563 SQ.FT.
UPPER	643 SQ.FT.
LOWER	514 SQ.FT.

TOTAL 1,720 SQ.FT.

GARAGE 449 SQ.FT.

DECK 585 SQ.FT.

TOTAL 1,034 SQ.FT.



UPPER FLOOR
643 SQ.FT.
CH: 8'-0"



0 ft 3 ft 5 ft

The floor plan and the measurements are approximate and are to be used for advertising usage only.
Not suitable for architectural or construction. E&O Insured