

# 989 DUNDONALD DRIVE

PORT MOODY, BC

MAIN 1,119 SQ.FT.

LOWER 1,119 SQ.FT.

**TOTAL 2,238 SQ.FT.**

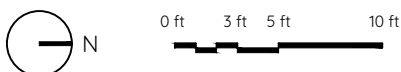
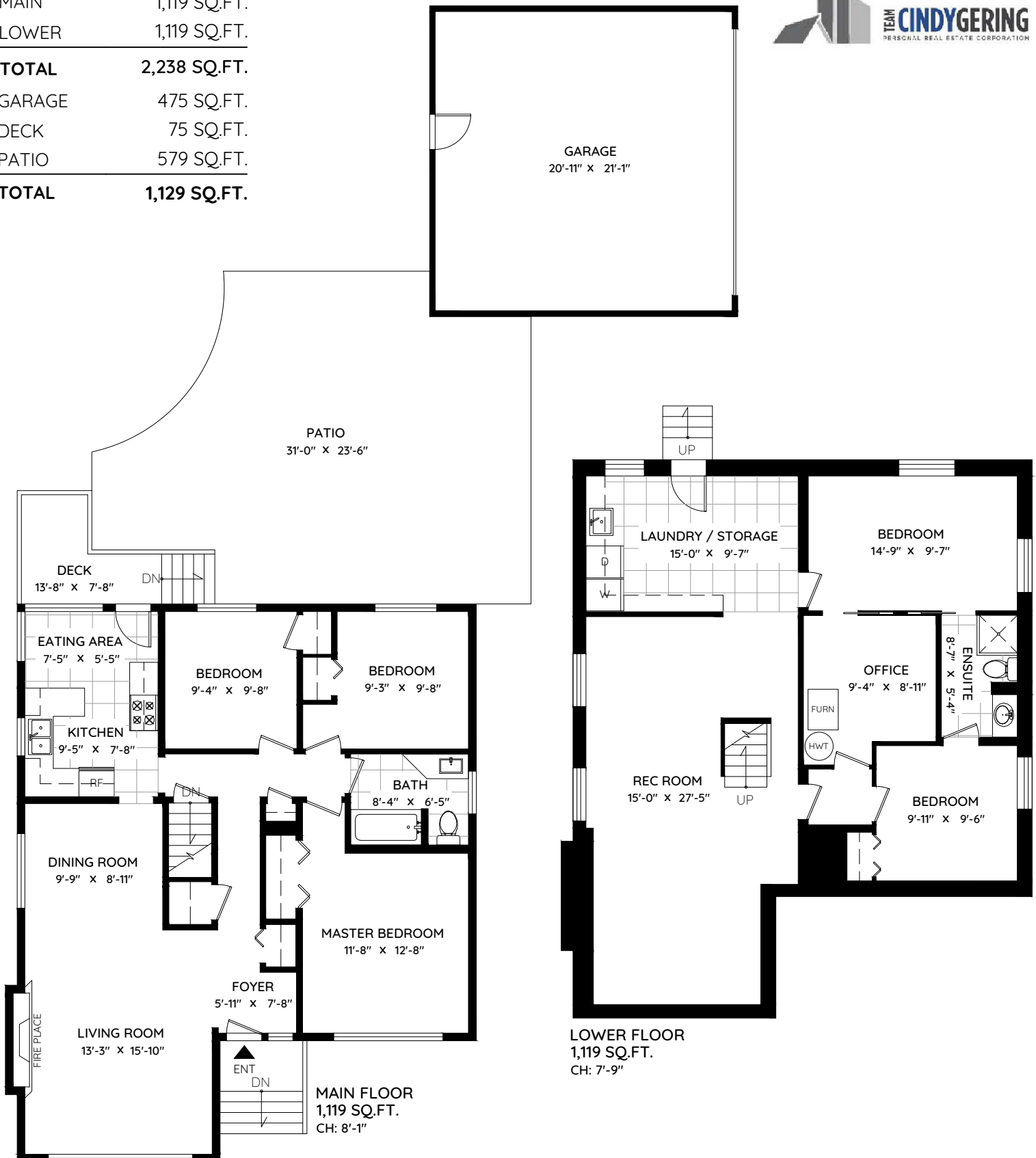
GARAGE 475 SQ.FT.

DECK 75 SQ.FT.

PATIO 579 SQ.FT.

**TOTAL 1,129 SQ.FT.**

NEWWEST  CONDO.COM



The floor plan and the measurements are approximate and are to be used for advertising usage only.  
Not suitable for architectural or construction. E&O Insured

keyplan   
plan your space