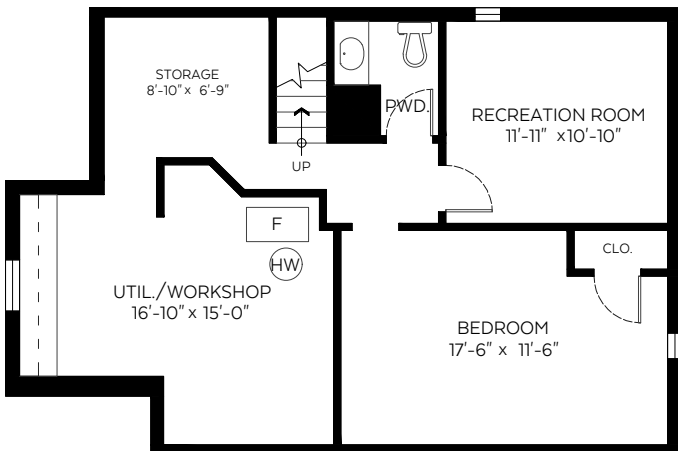
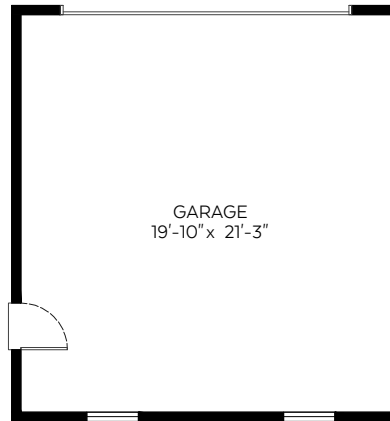


1905 Eighth Avenue,
New Westminster, B.C.

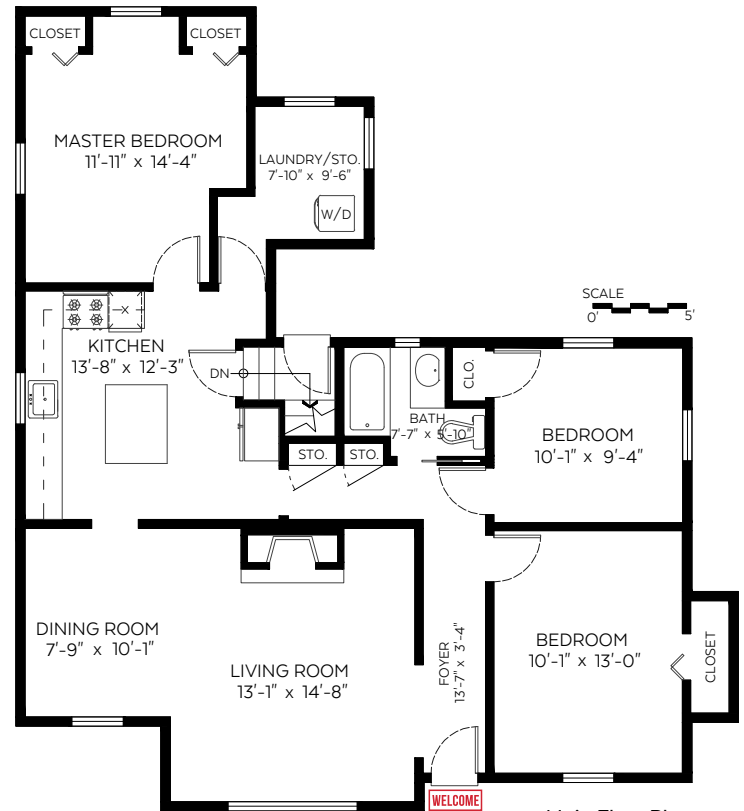
Main Floor: 1,164 sq.ft.
Lower Floor: 799 sq.ft.
Total: 1,963 sq.ft.

Auxiliary Area

Garage: 465 sq.ft.



Lower Floor Plan
Floor Area: 799 sq.ft.



Main Floor Plan
Floor Area: 1,164 sq.ft.
Ceiling Height: 8'



Measured on: Aug. 23, 2019

The floor plan is not suitable for architectural/construction and is covered under E&O. © Excelsior Measuring Inc. 2019. All rights reserved for Excelsior Measuring Inc. Users shall not publish and distribute such material (in whole or in part) and/or incorporate it in other works in any form.

