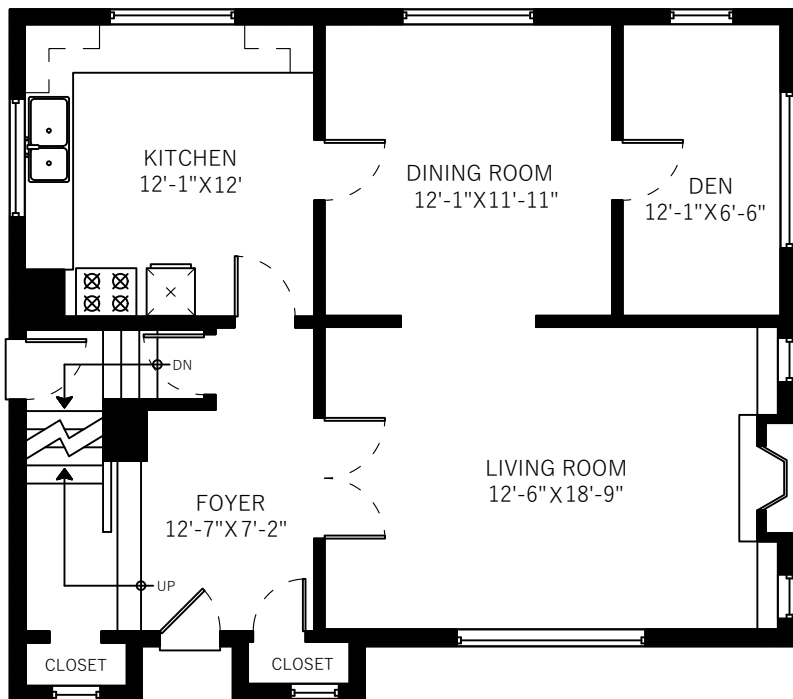


124 Tenth Ave  
New Westminster, BC

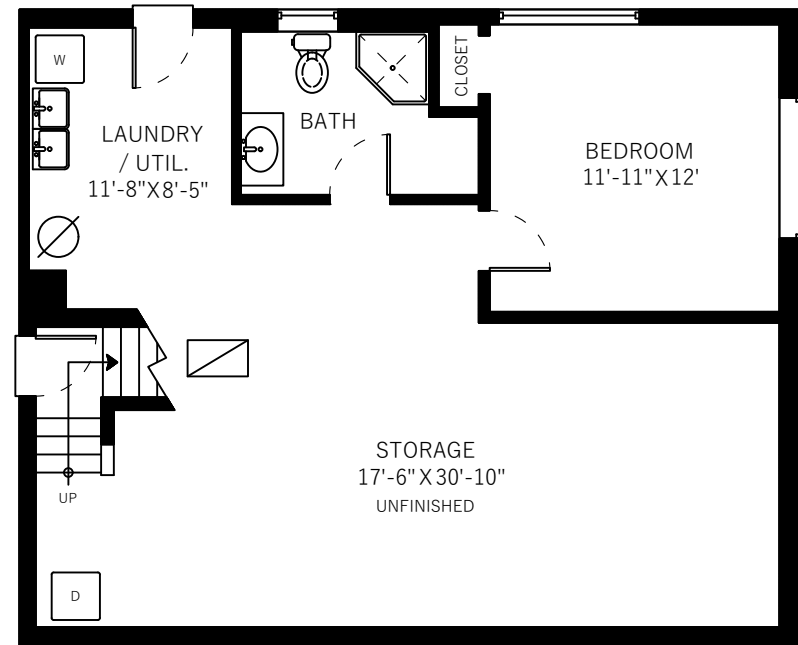
Main Floor	883 SQ.FT.
Upper Floor	739 SQ.FT.
Lower Floor	859 SQ.FT.
<b>Total</b>	<b>2481 SQ.FT.</b>



Upper Floor: 739 Sq.Ft.  
Ceiling Height: 8'



Main Floor: 883 Sq.Ft.  
Ceiling Height: 8'-5"



Lower Floor: 859 Sq.Ft.  
Ceiling Height: 6'-5"