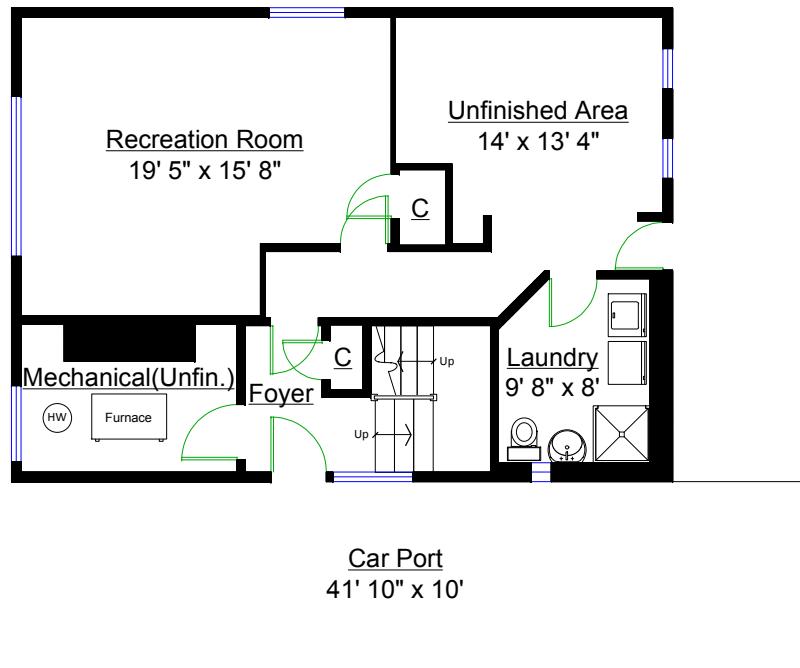


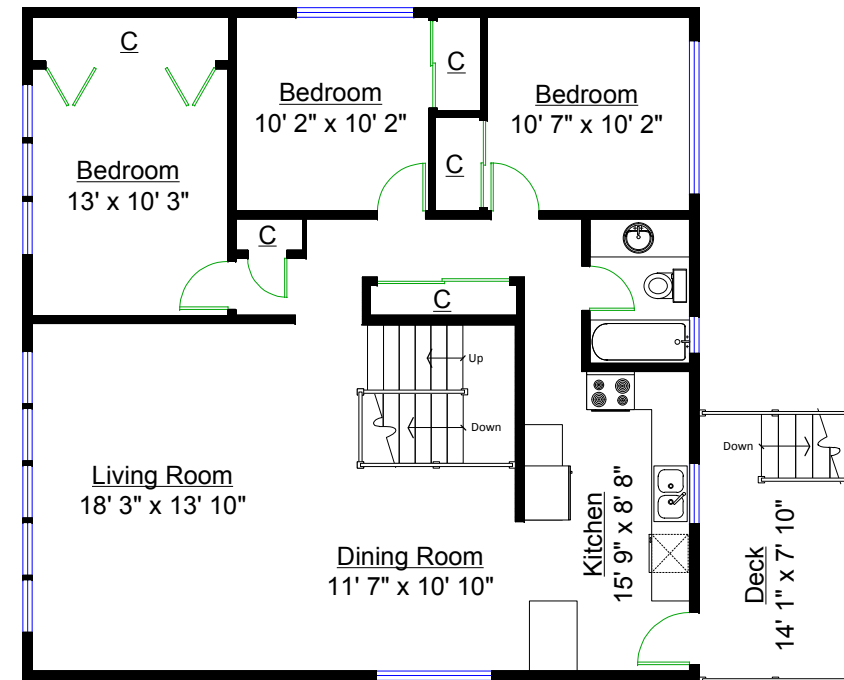
# 1415 Kings Avenue, West Vancouver



Tyler MacDonald  
604-340-2538



LOWER LEVEL



MAIN LEVEL

## Totals\*\*

Main Level:	1,252 sq. ft.
Lower Level:	609 sq. ft.
TOTAL(FIN.):	1,861 sq. ft.
Unfinished Area:	156 sq. ft.
Mechanical:	98 sq. ft.
GRAND TOTAL:	2,115 sq. ft.

## Other Areas

Car Port:	417 sq. ft.
Deck:	125 sq. ft.
TOTAL:	542 sq. ft.