

FOR THOSE *WHO KNOW*

LET'S BE

FRÄNK

**It's not for everyone.** Fränk speaks to those who embrace sophistication and thrive within their own individual rhythm. Created for individuals aiming to make a statement in their elevated taste and unique place of residence. **It's for those who know.**



Statement architecture.

West Side address. German kitchens.

Majority of homes under \$1 million.

**For those who know.**

FOR THOSE *WHO KNOW* DESIGN.



Fränk is a study in contrasts. Light versus dark. Horizontal versus vertical. Masculine versus feminine. Seeming-opposites that come together to form a composition of pure originality, destined to become an instant classic. The little black dress with a string of pearls. The hand-tailored suit with a perfect crisp white shirt. The bold Oak Street address with the stunning gold detailing.





The dramatic contrasts of Fränk's architecture becomes quieter, more subtle as one approaches the building entry. Scale becomes increasingly human – more intimate. Verdant landscaping punctuates the lines, lending moments of calming breath within this thriving urban centre.



Lobby



Fränk's interior finishes have been painstakingly selected to strike a delicate balance between being bold enough to stand apart from the masses, yet subtle enough to allow your expression of personal taste to stand proudly in the fore.





FOR THOSE *WHO KNOW* AMENITY.



Banquet room



Co-working space

UBC

KERRISDALE

SHAUGHNESSY

DOWNTOWN

OAKRIDGE

FOR THOSE *WHO KNOW* THE FUTURE.





8 : 2 8    A M

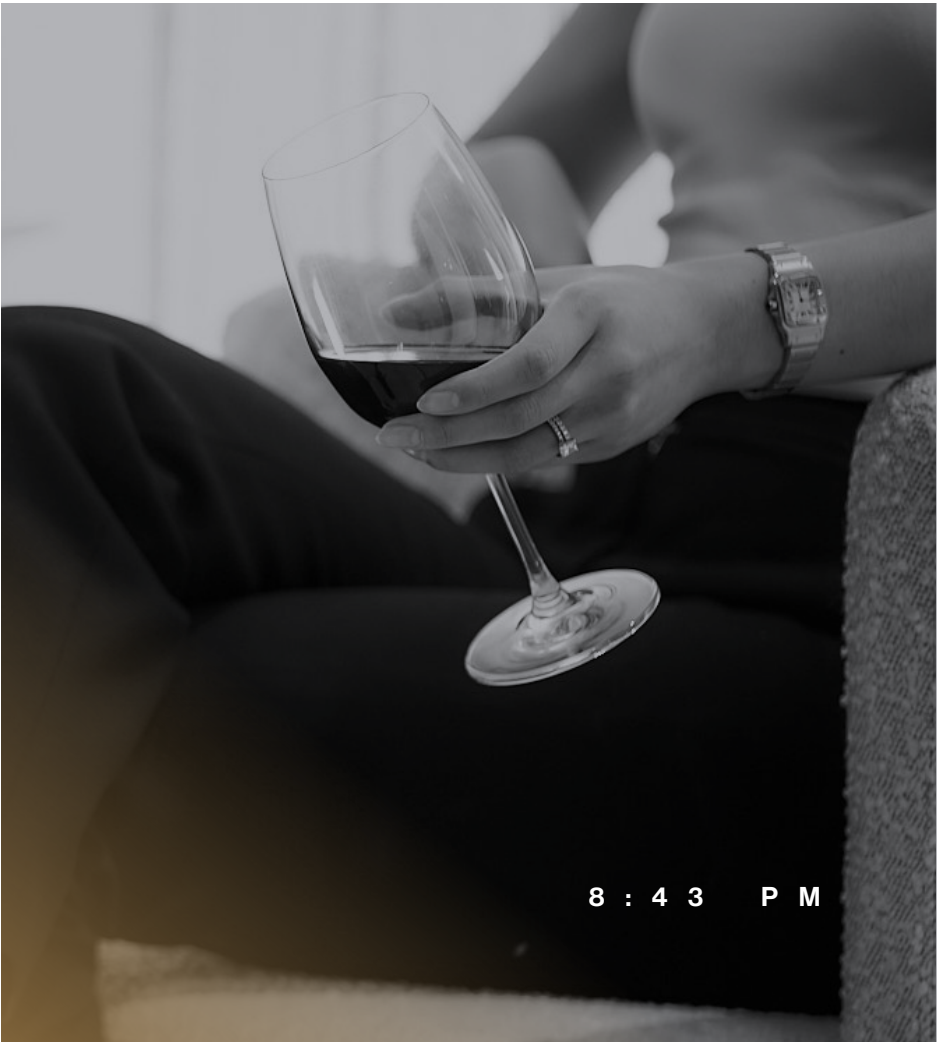
Residing at Oak and 64th, within quick reach of downtown, YVR, Kerrisdale and Richmond, Fränk's residents benefit from the largest transformative development in Vancouver history – the new Oakridge Centre. Shopping the world's most iconic fashion brands including Louis Vuitton, Prada, Versace, Moncler, and Christian Louboutin could not be easier.



3 : 4 5    P M



9 : 5 6    A M



8 : 4 3    P M

## ENRICH DEVELOPMENTS

We are a development and construction company with an established history of delivering quality residential and mixed-use development projects. Since 2008, our success has been built on forging long-term relationships with community stakeholders, and the people we work with every day. This has enabled us to provide a unique and personalized offering to our homeowners, grounded by our ongoing commitment to continuous innovation.

Our vision is to create the perfect balance between our two pillars of considered spaces and carefree living, we pay close attention to every stage - from planning and design to construction and customer service. We build to enrich lives.

## Considered Spaces

Our vision for considered spaces is a holistic approach to building and community development. It begins with a location that creates a balance between the neighborhood, schools, transit, connectivity to the city, and access to nature. From there, our design, layout, functionality of the homes, and amenities are carefully created to support and enhance the lives of future homeowners.

## Carefree Living

We believe that your home should fulfill all your needs today, and well into the future. It should be functional, built with quality, support your entire family with services and entertainment, and, most importantly, give you peace of mind in your investment. Every aspect should be carefully planned and expertly executed with quality and integrity.

Learn more at: [enrichdevelopments.com](http://enrichdevelopments.com)



## ARNO MATIS ARCHITECTURE (AMA)

Listed for two consecutive years as a top 40 leading global design firm for the 21st century by World Architecture News, AMA has over 28 years of experience in mid-to-large scale rezoning & development. We specializes in densifying coastal cities with modern spaces that connect to nature.

We strive for responsive, sustainable design solutions beyond the utopian that serve the present yet point to an unimaginably exciting future.

Learn more at: [arnomatisarchitecture.com](http://arnomatisarchitecture.com)

## ID DESIGN CONSULTING

We pride ourselves on our ability to create unique spaces that reflect our clients' distinct stories. Providing services to everyone from homeowners, developers, retailers, and business visionaries, we excel when faced with new creative challenges. Taking a personal approach to each project and learning about our clients' backgrounds and motivations, leads us to create beautiful spaces that reflect their personalities. With over 10 years in the real estate industry, we bring our experience from prior projects to each new endeavor and take pride in our streamlined design process, providing an effortless experience for our clients.

Learn more at: [idesignconsult.com](http://idesignconsult.com)

THE DEVELOPER RESERVES THE RIGHT TO MAKE MODIFICATIONS OR SUBSTITUTIONS TO PROJECT DESIGN, SPECIFICATIONS, FEATURES, APPLIANCES, PRICING, AND FLOOR PLANS IN ITS SOLE DISCRETION AND WITHOUT NOTICE OR OBLIGATION. DIMENSIONS, SQUARE FOOTAGE, AND FLOOR PLANS ARE ILLUSTRATIVE, APPROXIMATE AND PROVIDED FOR REFERENCE ONLY. FINAL DIMENSIONS, SQUARE FOOTAGE AND FLOOR PLANS MAY VARY AND WILL BE DETERMINED BY FINAL STRATA PLAN MEASUREMENTS. ARTIST'S RENDERINGS AND MAPS ARE INTERPRETATIONS ONLY. THIS IS NOT AN OFFERING FOR SALE. ANY SUCH OFFERING MAY ONLY BE MADE WITH A DISCLOSURE STATEMENT. E.&O.E. SALES & MARKETING BY PRIMA MARKETING.





STARTING FROM \$699,000.

FOR THOSE *WHO KNOW* FRÄNK IS THE ONE.



ThoseWhoKnowFrank.com

