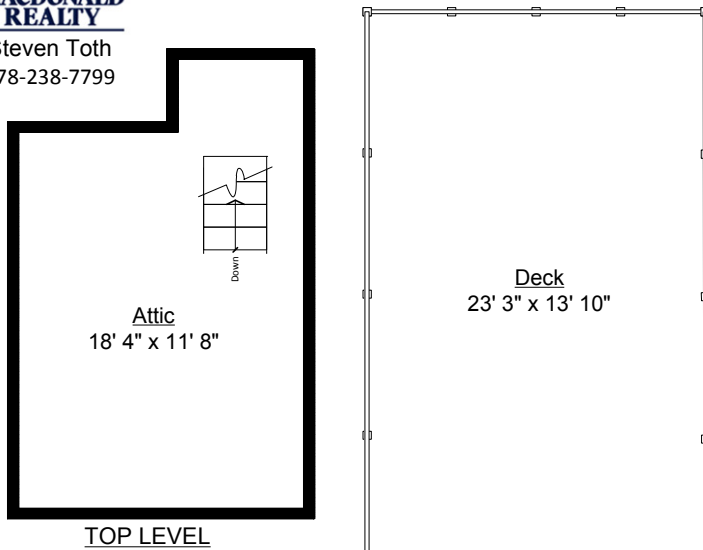


5163 Ross Street, Vancouver



Totals**

Main Level: 1,055 sq. ft.
Lower Level: 1,279 sq. ft.
TOTAL(FIN.): 2,334 sq. ft.
Attic: 221 sq. ft.
GRAND TOTAL: 2,555 sq. ft.

Other Areas

Deck: 322 sq. ft.
Porch: 86 sq. ft.
Shed: 83 sq. ft.
TOTAL: 491 sq. ft.

