

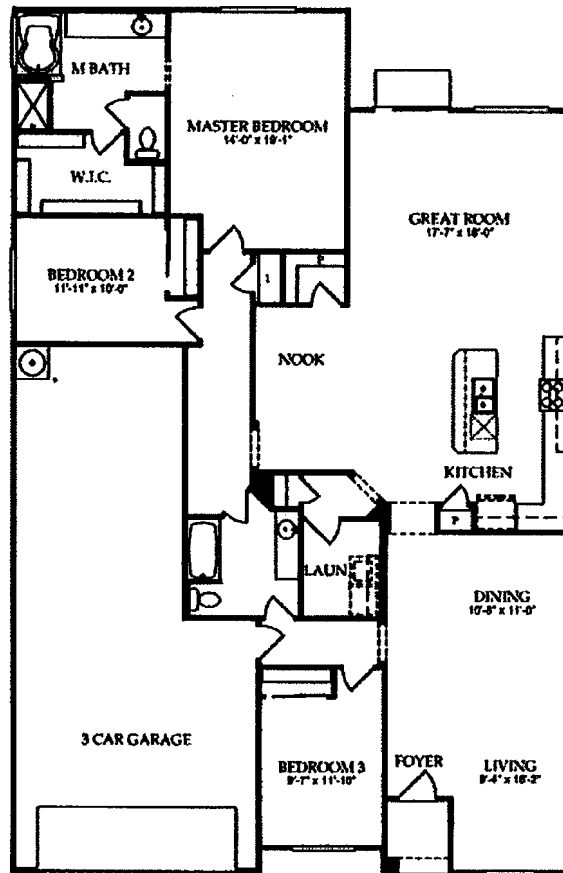
Del Webb®

Fireside at Desert Ridge



3819 Ember Glow Way, Phoenix AZ

3 Bedroom(s)
2 Bathroom(s)
3 Car Garage
\$399990

Juniper



First Floor

  MEMBER OF THE PULTE HOMES FAMILY™

Pulte/Del Webb Realty, Brokerage for Pulte Home Corporation, 18111 North Pima Road, Suite 100 Scottsdale, Arizona 85260. Prices reflect base prices and are subject to change without notice. Lot premiums may apply and options extra. Details available upon request. This depiction represents an artist's conception of the community and is not intended to be an exact representation and is not intended to show specific detailing. Plans remain subject to change without notice. Drawings not to scale. All measurements shown are approximate and not necessarily to scale. Location, size and construction of doors, windows, walls, fireplaces and any other items depicted may vary depending on elevation preference or choice of options and are subject to change without notice. Due to normal construction tolerances, the room sizes shown may vary slightly. The developer may change home design, materials, features and methods of construction without prior notice. Model homes may contain some optional features not available through the developer. The 'include feature' images are not actual representation of the final product delivered. Copyright © 2005 Pulte Homes, Inc. All rights reserved.

