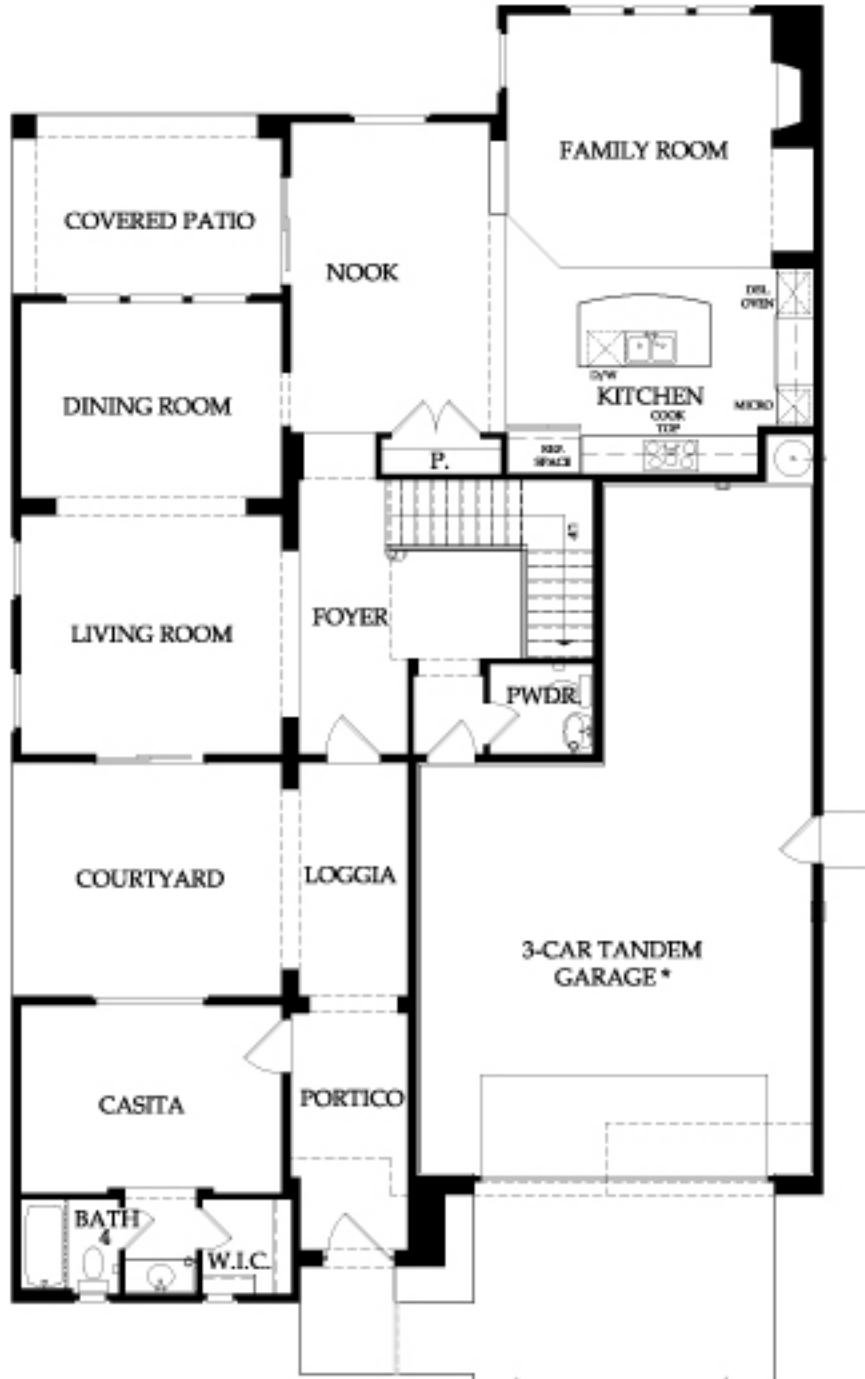


# The Monument Series at Desert Ridge

DRAWING NOT TO SCALE

ALL MEASUREMENTS SHOWN ARE APPROXIMATE & NOT NECESSARILY TO SCALE. LOCATION, SIZE & CONSTRUCTION OF DOORS, WINDOWS, WALLS, FIREPLACES & ANY OTHER ITEMS DEPICTED MAY VARY DEPENDING ON ELEVATION PREFERENCE OR CHOICE OF OPTIONS & ARE SUBJECT TO CHANGE WITHOUT NOTICE. DUE TO NORMAL CONSTRUCTION TOLERANCES, THE ROOM SIZES SHOWN MAY VARY SLIGHTLY.



\* TANDEM BAY MEASURES APPROX. 11'-0" x 15'-0"

ELEVATION 'A'  
**First Floor**

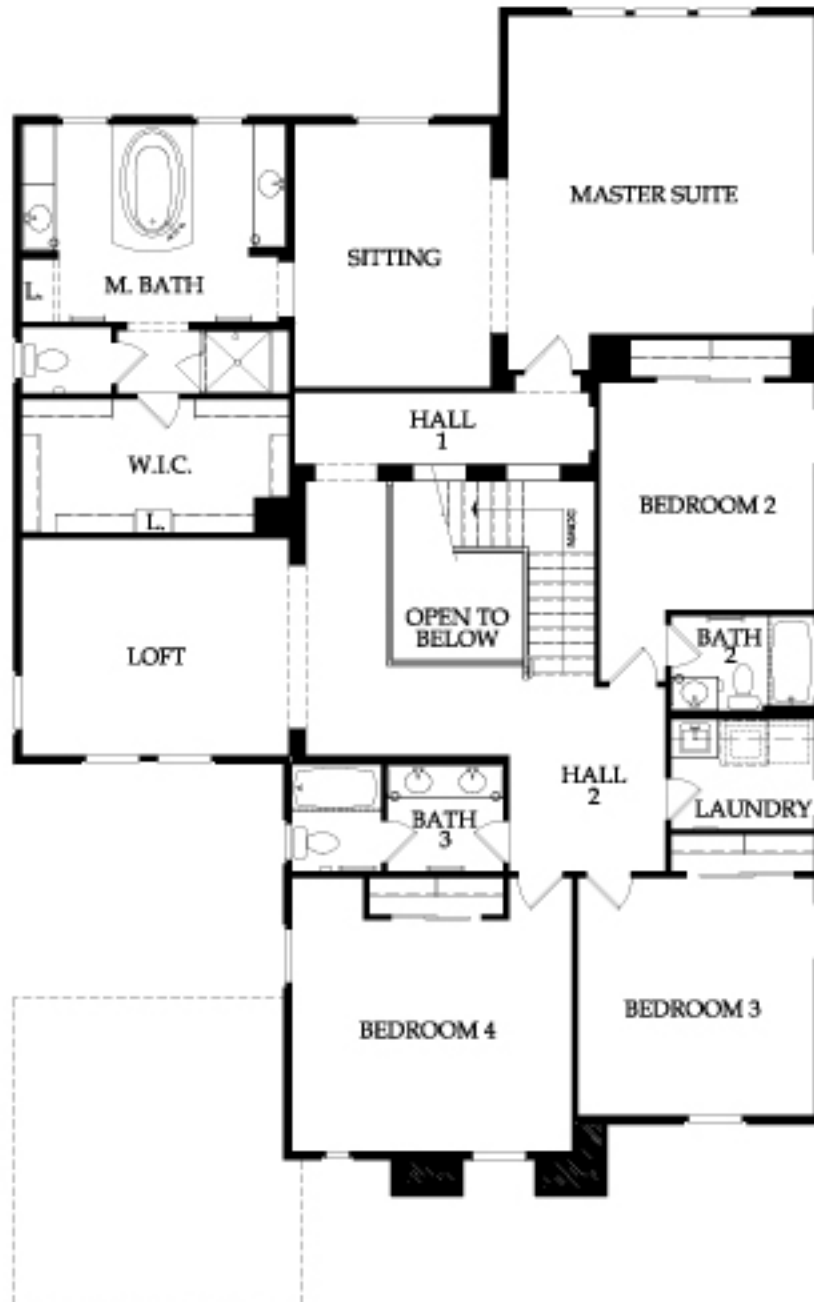
**3,892 S.F.**  
**CHESAPEAKE**  
**Plan 4536-4**

September 05, 2008 2:41 PM

# The Monument Series at Desert Ridge

DRAWING NOT TO SCALE

ALL MEASUREMENTS SHOWN ARE APPROXIMATE & NOT NECESSARILY TO SCALE. LOCATION, SIZE & CONSTRUCTION OF DOORS, WINDOWS, WALLS, FIREPLACES & ANY OTHER ITEMS DEPICTED MAY VARY DEPENDING ON ELEVATION PREFERENCE OR CHOICE OF OPTIONS & ARE SUBJECT TO CHANGE WITHOUT NOTICE. DUE TO NORMAL CONSTRUCTION TOLERANCES, THE ROOM SIZES SHOWN MAY VARY SLIGHTLY.



ELEVATION 'A'  
Second Floor

3,892 S.F.  
**CHESAPEAKE**  
Plan 4536-4