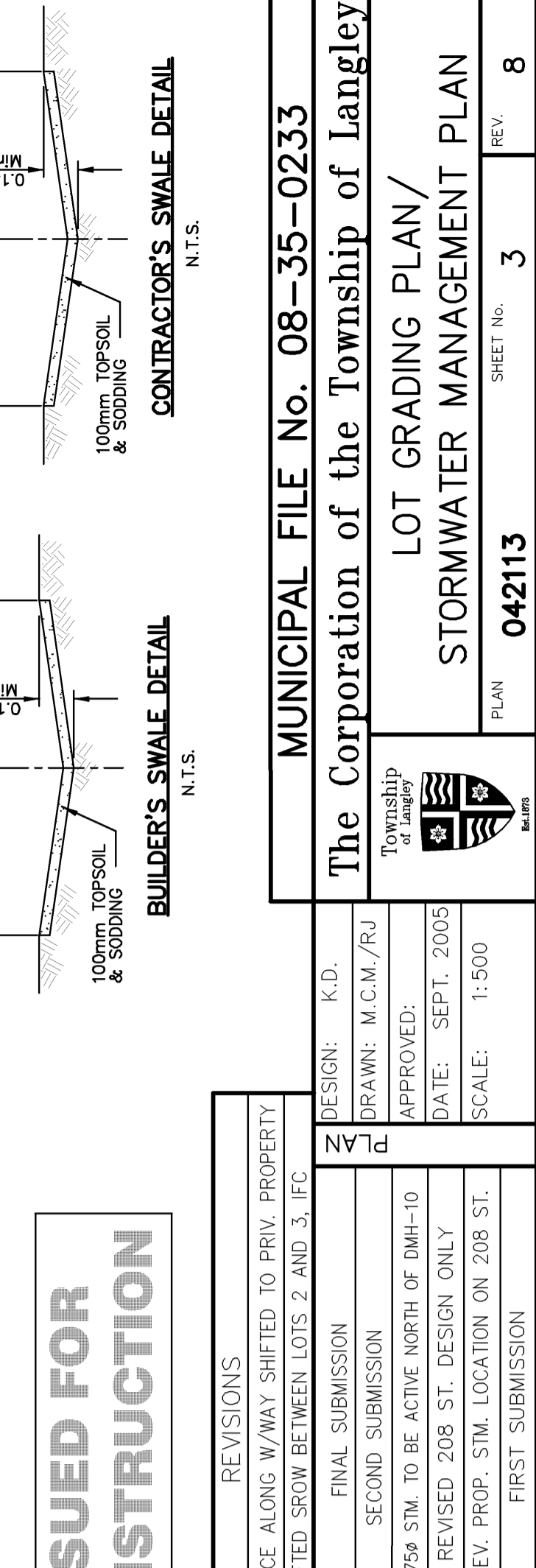
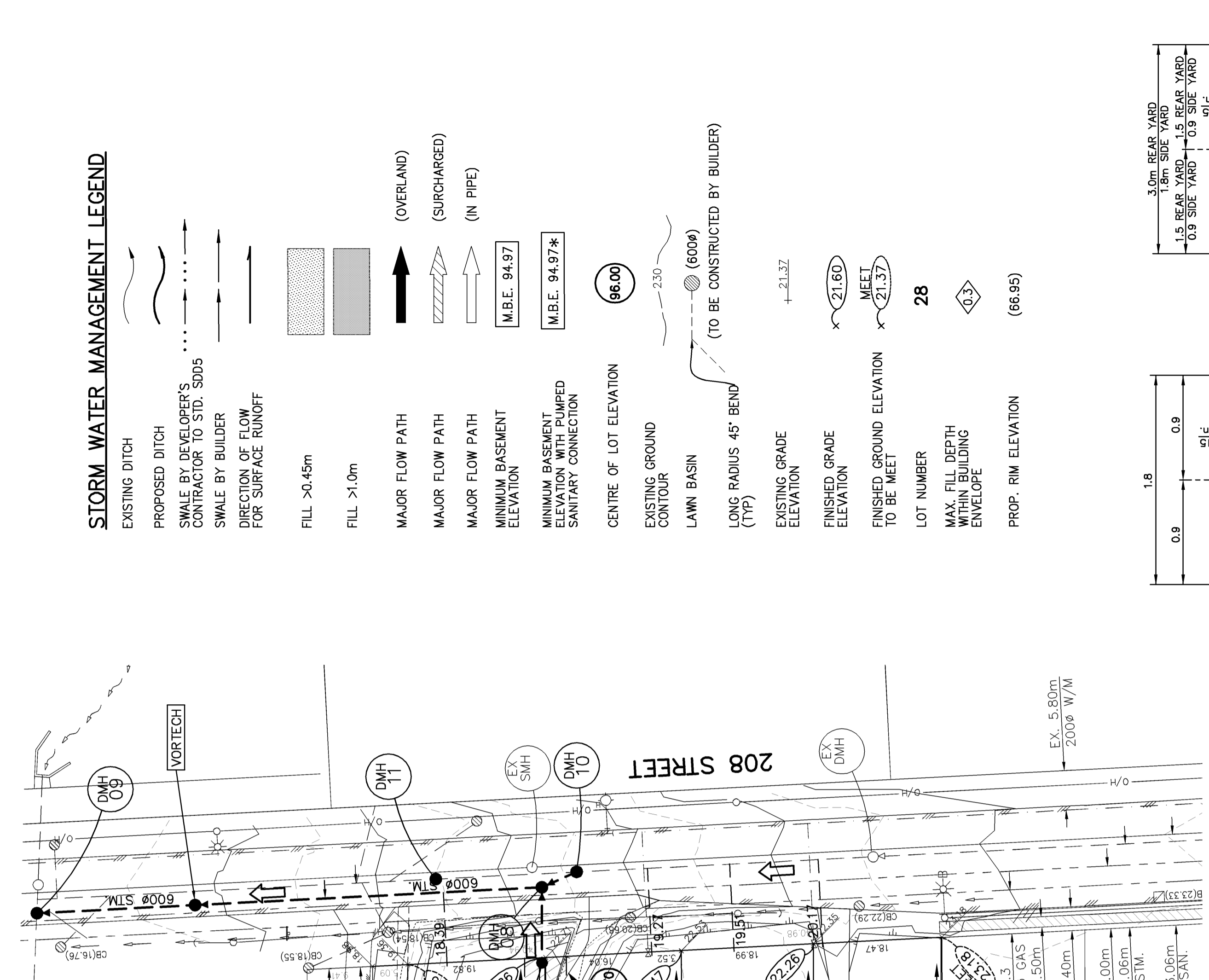


STORM WATER CALCULATION SHEET

CITY PROJECT NO.: 08-35-0233
 INTENSITY CURVE: 2 Surrey Hill / Kwantlen (Ave)
 H.Y. ENGINEERING FILE: 042113
 DESIGN RETURN PERIOD: 5 year/100 year
 CLIENT: Siva Construction Ltd.
 n=0.013, Conc.
 n=0.013, Conc.

Location of Drainage Area	From MH	To MH	Area "A" "R" "AR" "AR"	Total Area	Rainfall Intensity	Time of Concentration		Slope	Slope Length	Vel	Mann. Cap.	Major Flow Routes	
						min	hrs						
Lots 1-3, 13-15	DMH 1	DMH 2	0.66	0.60	0.40	0.40	0.033	29.9	3.70	0.3	2.6	0.013	0.184
Lots 5-11	DMH 3	DMH 4	0.03	0.60	0.02	0.41	0.033	29.8	1.00	0.3	1.4	0.013	0.096
Lots 4, 12, 20-21	DMH 5	DMH 6	0.56	0.60	0.34	0.34	0.033	29.8	1.00	0.3	2.75	0.013	0.096
Lot 19, 2 Filt. Lots	DMH 7	DMH 8	0.31	0.60	0.19	0.94	0.033	28.7	0.75	0.45	1.5	0.013	0.245
Lots 16-18, 24-25	DMH 9	DMH 10	0.24	0.60	0.14	1.08	0.033	29.7	0.75	0.45	3.8	0.013	0.245
Lots 22-23	DMH 11	DMH 12	0.60	0.60	0.36	0.36	0.033	29.7	2.00	0.25	4.6	0.013	0.083
Upstream Catchment	EX	DMH 13	0.16	0.60	0.10	1.54	0.033	25.7	0.50	0.925	9.16	0.013	0.302
208 Street	DMH 14	DMH 15	4.00	0.60	2.40	2.40	0.033	28.7	6.86	0.375	150.0	0.013	0.456
208 Street	DMH 16	DMH 17	0.23	0.60	0.14	2.54	0.033	28.7	8.20	0.375	5.0	0.013	0.498
208 Street	DMH 18	DMH 19	0.06	0.60	0.04	4.11	0.033	25.5	2.00	0.6	90.0	0.013	0.863
208 Street	DMH 20	DMH 21	0.00	0.60	0.00	4.11	0.033	25.5	16.00	0.6	22.6	0.013	2.441



ISSUED FOR CONSTRUCTION

NOTE: ENGINEERING TO BE CERTIFIED BY THE ENGINEER RECORD AT TIME OF FINAL BUILDING PERMIT INSPECTION.

No.	DATE	REVISIONS
8	10MAY06	FENCE ALONG W/WAY SHIFTED TO PRIV. PROPERTY
7	03MAY06	SHIFTED SLOW BETWEEN LOTS 2 AND 3, IFC
6	30MAR06	FINAL SUBMISSION
5	09FEB06	SECOND SUBMISSION
4	11JAN06	375# STM. TO BE ACTIVE NORTH OF DMH-10
3	09JAN06	REVISED 208 ST. DESIGN ONLY
2	30NOV05	REV. PROP. STM. LOCATION ON 208 ST.
1	26OCT05	FIRST SUBMISSION

NOTES

* FOR LOTS 20 AND 21 GRAVITY SANITARY MAY NOT BE ATTAINABLE IF THE BUILDING IS BUILT AT THE LOWER MBE ELEVATION. BUILDER IS TO REVIEW THE BUILDING DESIGN AND SANITARY CONNECTION ELEVATION TO DETERMINE IF A PUMP IS REQUIRED. A GRAVITY SANITARY SEWER CONNECTION IS ATTAINABLE IF THE BUILDING IS BUILT AT THE HIGHER MBE ELEVATION.

PROFESSIONAL ENGINEER, IN GOOD STANDING IN AND FOR THE PROVINCE OF BRITISH COLUMBIA. THE ATTACHED DRAWINGS HAVE BEEN DESIGNED TO GOOD ENGINEERING PRACTICE AND IN COMPLIANCE WITH THE TOWNSHIPS OF LANGLEY SUBDIVISION AND DEVELOPMENT CONTROL BY-LAW, EXCEPT AS NOTED BELOW.

EXCEPTIONS:

UTILITIES AND APPURTENANCES

CONTRACTOR TO CONTACT TELUS, B.C. HYDRO AND TERASER GAS PRIOR TO THE COMMENCEMENT OF CONSTRUCTION TO OBTAIN LOCATIONS OF UTILITIES AND APPURTENANCES REQUIRING ADJUSTMENT.

BENCHMARK

- LOCATED @ THE INTERSECTION OF 83 AVENUE & 208 STREET.
- MON. NO. 84H974
- LOCATED @ THE INTERSECTION OF 208 STREET & 207 STREET.
- ELEV. = 6.805m

LEGAL

- FIRST: ON PLAN AMR8354, EXCEPT PART DICKEYD
- SECOND: ON PLAN LMP1105
- THIRD: PARCEL A (EXPLANATORY PLAN 38883)
- FOURTH: PARCEL B (EXPLANATORY PLAN 38883) LOT 19 PLAN 1697
- EXCEPT PART DICKEYD ROAD ON PLAN LMP12228 ALL OF SECTION 35, SECTION B, N.W.D.