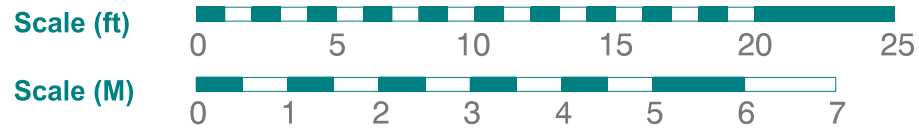
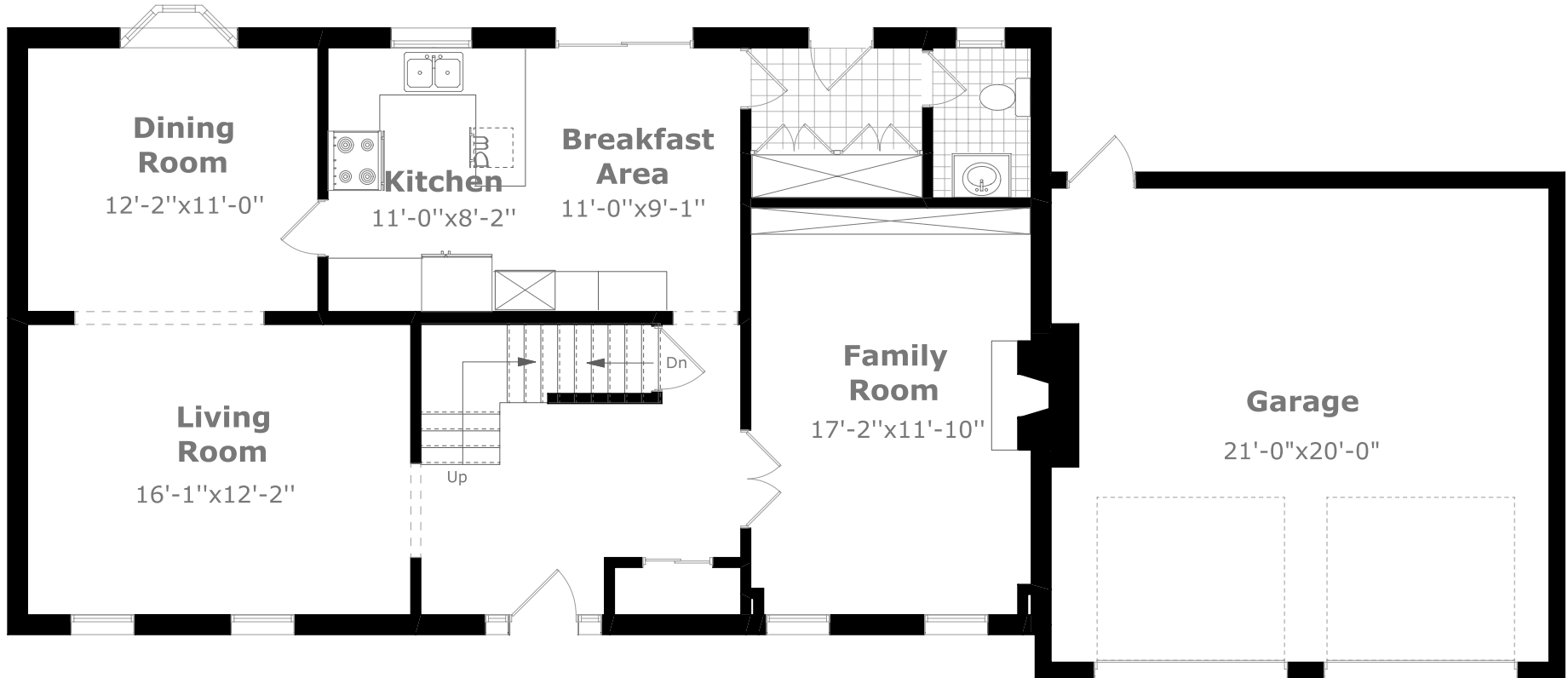


1411 Fleetwood Road



June 2009



Main Floor Plan

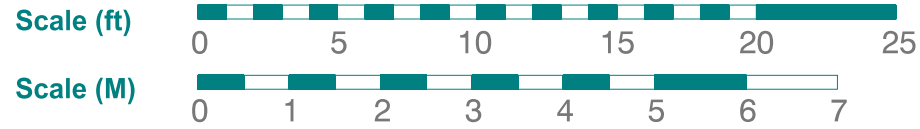
1,125.7 sq. ft.+

455.1 sq. ft. (Garage)

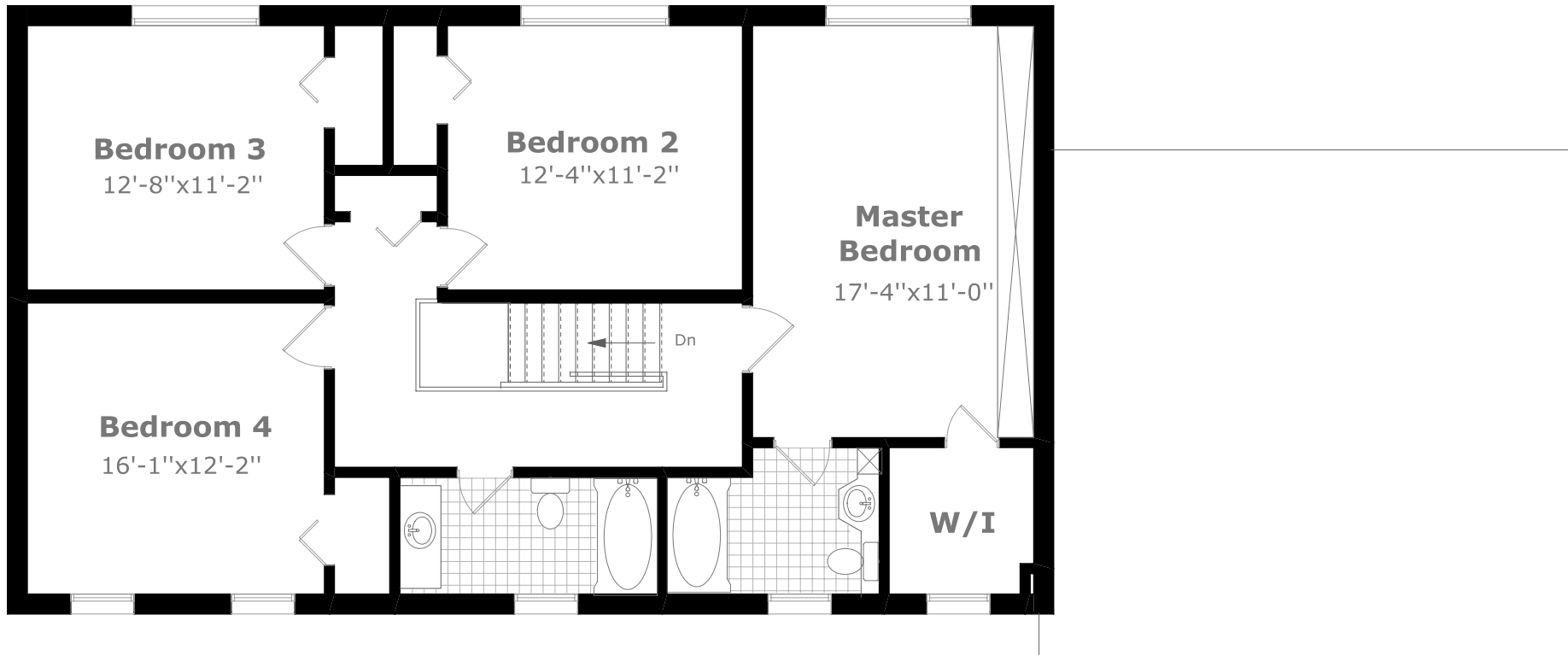


Measurements may not be 100% accurate. Floor Plans provided for illustrative purposes only. Room sizes not used to calculate area.

1411 Fleetwood Road



June 2009



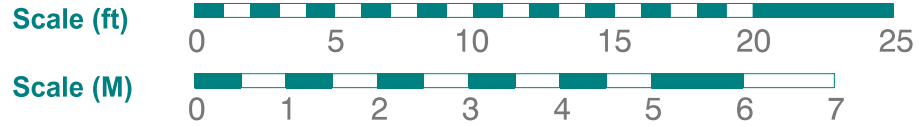
2nd Floor Plan

1,125.7 sq. ft.

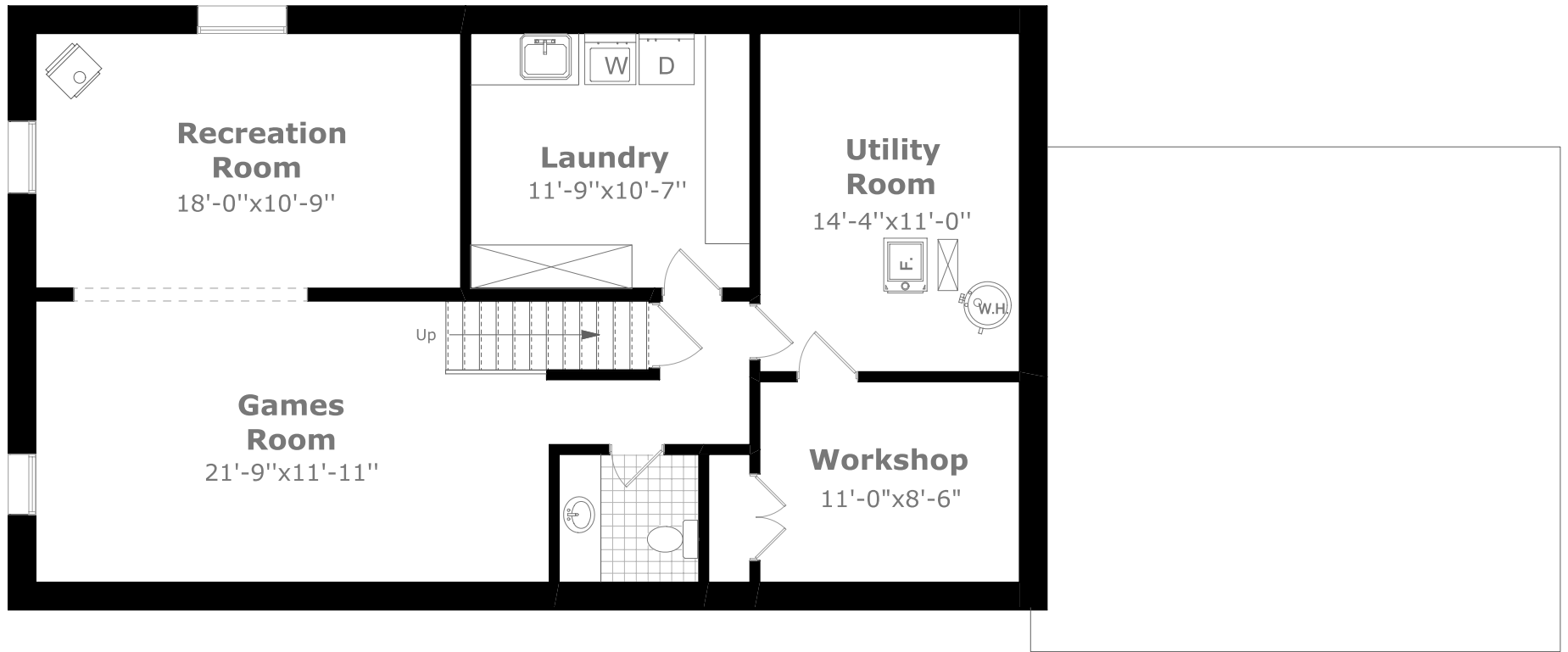


Measurements may not be 100% accurate. Floor Plans provided for illustrative purposes only. Room sizes not used to calculate area.

1411 Fleetwood Road



June 2009



Basement Plan

1,125.7 sq. ft.



Measurements may not be 100% accurate. Floor Plans provided for illustrative purposes only. Room sizes not used to calculate area.