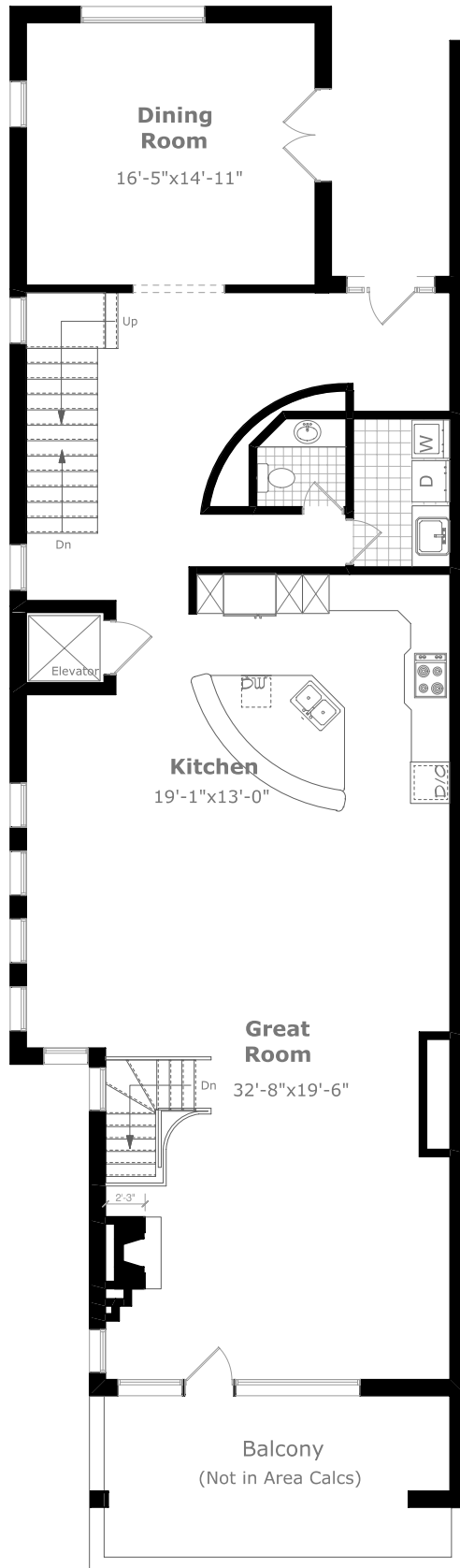
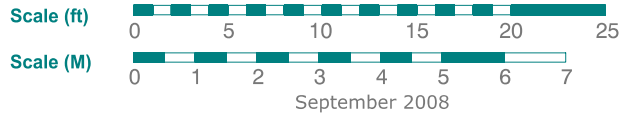


# 81 Forsythe Street



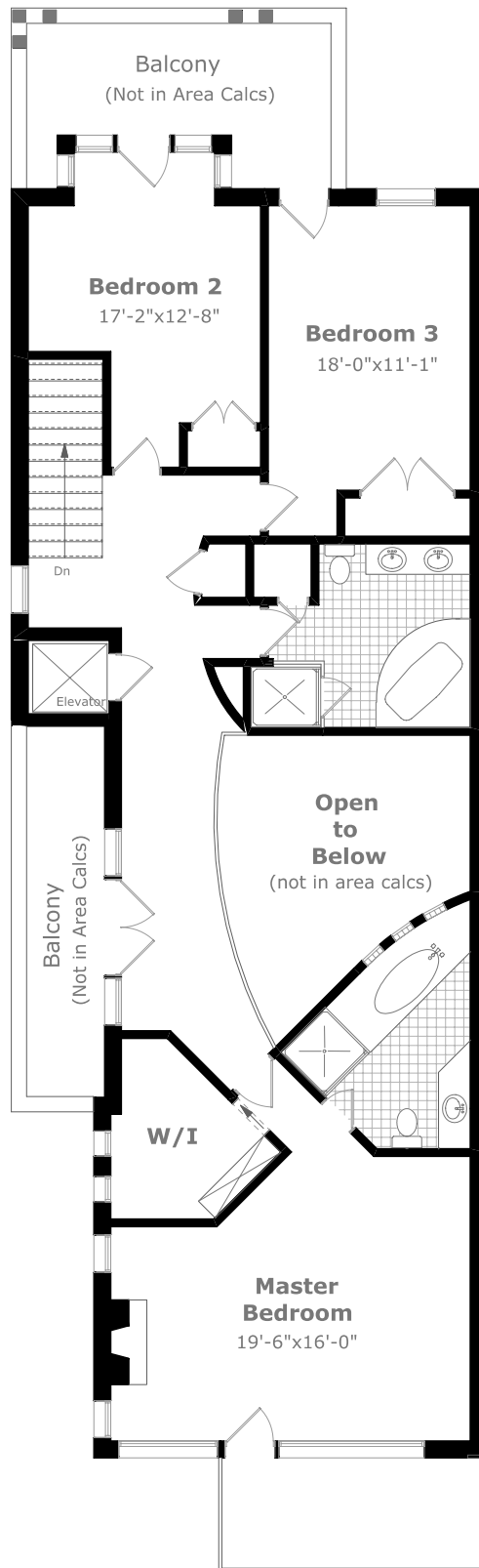
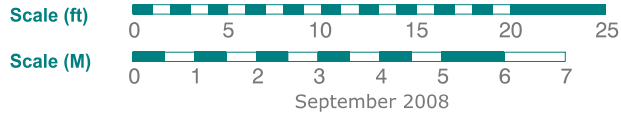
## Main Level

9'-4" Ceilings  
1,843.0 sq. ft. +  
214.2 sq. ft. (Balconies)



Measurements may not be 100% accurate. Floor Plans provided for illustrative purposes only. Room sizes not used to calculate area.

# 81 Forsythe Street



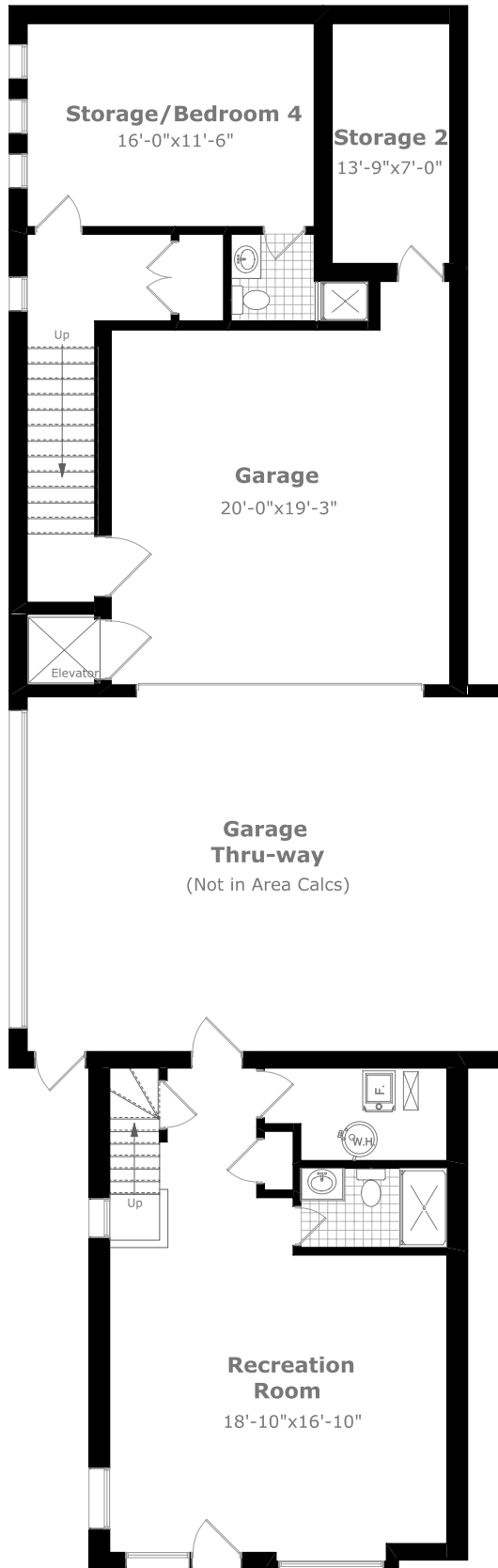
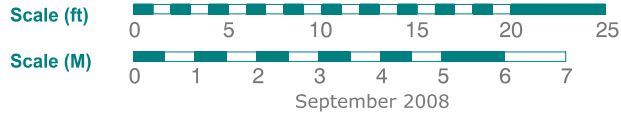
## Upper Level

8'-3" Ceilings  
1,439.2 sq. ft. +  
348.6 sq. ft. (Balconies)



Measurements may not be 100% accurate. Floor Plans provided for illustrative purposes only. Room sizes not used to calculate area.

# 81 Forsythe Street



## Lower Level

1,212.6 sq. ft. +  
432.1 sq. ft. (Garage)



Measurements may not be 100% accurate. Floor Plans provided for illustrative purposes only. Room sizes not used to calculate area.